
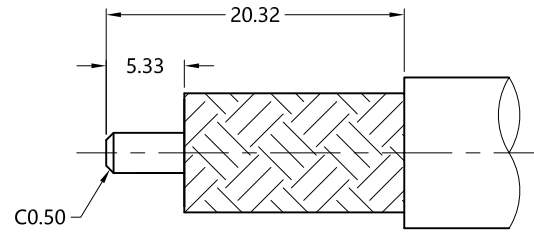
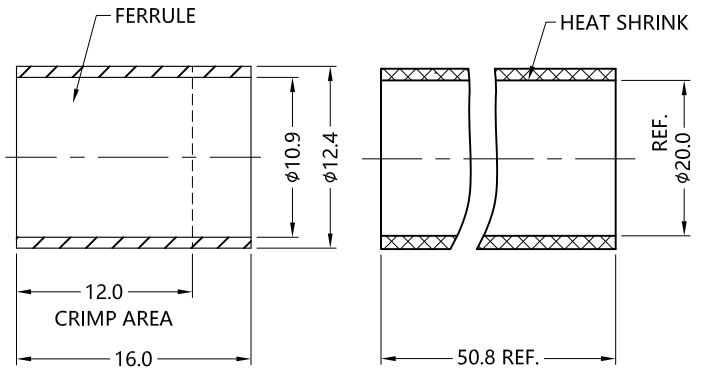
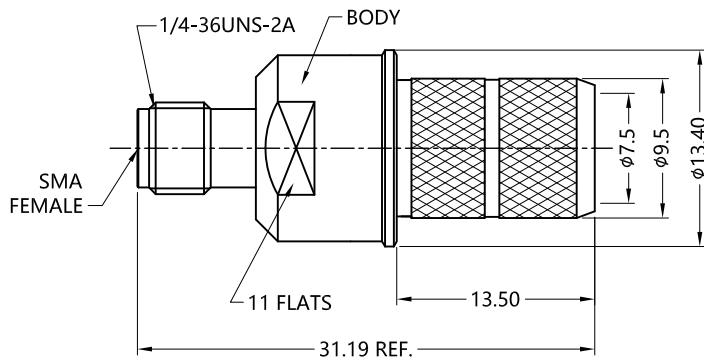


1	2	3	4	5	6
REV 0	DESCRIPTION FIRST EDITION	ECN NO N/A	NAME LZC	DATE 2021-09-14	 ALL PARTS MUST MEET TO RoHS REQUIREMENTS

REMARKS:
 1. CRIMPED FERRULE HEX. CRIMP SIZE .429"
 2. CONTACT PIN TO CAPTIVE
 3. ADDS SIZE: 13.7mm



RECOMMENDED
CABLE STRIPPING DIM'S

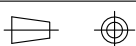



MATERIALS AND PLATING		UNIT: MICRO-INCHES	ELECTRICAL CHARACTERISTICS	
BODY	BRASS C3604	ALBALOY 80~180 u"/COPPER	IMPEDANCE	50 Ω
CONTACT PIN	BERYLLIUM COPPER	GOLD 10 u"/NICKEL/COPPER	VOLTAGE RATING	175 V(rms)
INSULATOR	PTFE ASTM-D-1710	N/A	FREQUENCY RANGE	DC~6 GHz
FERRULE	COPPER	ALBALOY 80~180 u"/COPPER	DIELECTRIC WITHSTANDING VOLTAGE	>500 V
			CONTACT RESISTANCE	CENTER CONTACT <3.0 mΩ OUTER CONTACT <2.0 mΩ
			INSULATION RESISTANCE	>5000 MΩ
			INSERTION LOSS	N/A
			VSWR	<1.35
			3RD INTERMODULATION	N/A

MECHANICAL CHARACTERISTICS	
FORCE TO ENGAGE AND DISENGAGE	N/A
CENTER CONTACT RETENTION FORCE	N/A
RECOMMENDED COUPLING TORQUE	N/A
COUPLING NUT RETENTION FORCE	N/A
DURABILITY	>500 cycles

ENVIRONMENTAL CHARACTERISTICS	
TEMPERATURE RANGE	-40 °C~+125 °C

CUSTOMER OUTLINE DRAWING

* CUSTOMER OUTLINE DRAWING		THIRD ANGLE PROJECTION 		 TITLE: SMA FEMALE S/T CRIMP FOR LMR-400 CABLE,50Ω DRAWING NO: 5MAF11S-A11-005
UNLESS OTHERWISE SPECIFIED: 1) C0.15 MAX; 2) REMOVE ALL BURRS; 3) SURFACE ROUGHNESS : Ra1.6; 4) UNITS:mm; 5) DIMENSIONS TOLERANCES DECIMALS .x ±0.3 .xx ±0.2 .xxx±0.1 ANGLES ±5°		APPROVED:	CUSTOMER P/N:	
		CHECKED:	SCALE: 2:1	
		DRAWING:	DATE: 2021-09-14 COMPANY WEBSITE: www.slkcorp.com	