
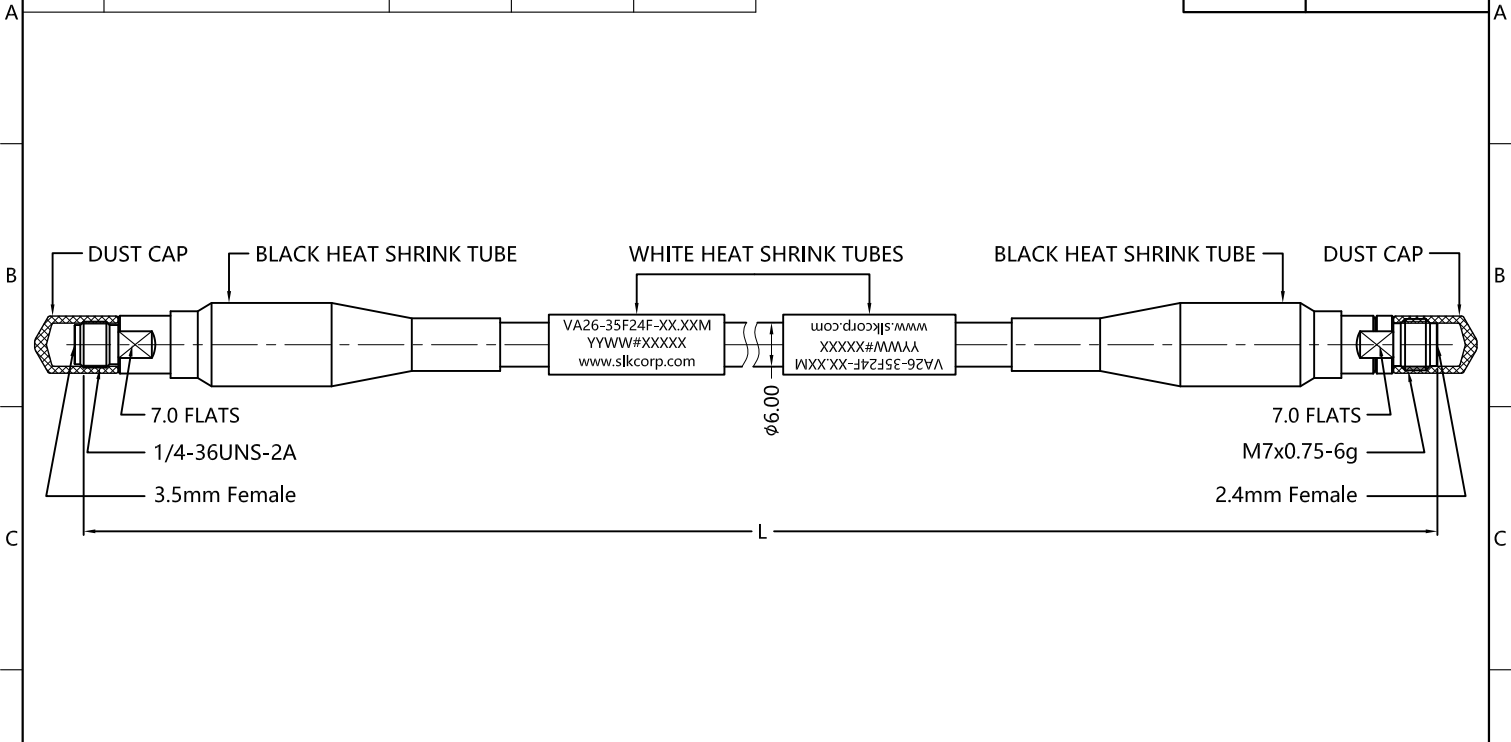



REV.	DESCRIPTION	ECN NO.	NAME	DATE	 ALL PARTS MUST MEET TO RoHS REQUIREMENTS
0	FIRST EDITION	N/A	YWD	2021-07-13	



4	VA26-35F24F-02.00M	2000 <sup>+30</sup> <sub>0</sub>	<5.2
3	VA26-35F24F-01.50M	1500 <sup>+30</sup> <sub>0</sub>	<4.3
2	VA26-35F24F-01.00M	1000 <sup>+20</sup> <sub>0</sub>	<3.1
1	VA26-35F24F-00.50M	500 <sup>+10</sup> <sub>0</sub>	<1.9
NO.	DRAWING NO.	L(LENGTH,mm)	INSERTION LOSS(dB)

MATERIALS AND PLATING UNIT: MICRO-INCHES				ELECTRICAL CHARACTERISTICS	
PART TYPE	PART NAME	MATERIALS	PLATING	IMPEDANCE	50 Ω
3.5mm FEMALE & 2.4mm FEMALE	BODY/SHELL	STAINLESS STEEL	PASSIVATION	VOLTAGE RATING	250 V(rms)
	INSULATOR	PEI	N/A	FREQUENCY RANGE	DC ~ 26.5 GHz
	CONTACT PIN	BERYLLIUM COPPER	GOLD /COPPER	DIELECTRIC WITHSTANDING VOLTAGE	>750 V
	DUST CAP	PVC	BLACK	INSULATION RESISTANCE	>1000 MΩ
CABLE	TEST CABLE			INSERTION LOSS	See Tables
				VSWR	<1.30
				RF- LEAKAGE	>90 dB
MECHANICAL CHARACTERISTICS				MECHANICAL PHASE STABILITY	≤±5°
MIN. BENDING RADIUS ,STATIC		30 mm		MECHANICAL AMPLITUDE STABILITY	<±0.05 dB
MIN. BENDING RADIUS ,REPEATED		60 mm			
RECOMMENDED COUPLING TORQUE		N/A			
COUPLING NUT RETENTION FORCE		N/A			
DURABILITY		>500 cycles			
CABLE RETENTION FORCE		>60 lbs			
CRUSH RESISTANCE		40 KN/M			
				ENVIRONMENTAL PARAMETER	
				TEMPERATURE RANGE	-40 °C~+85 °C

* CUSTOMER OUTLINE DRAWING			THIRD ANGLE PROJECTION		 TITLE : 3.5mm FEMALE S/T TO 2.4mm FEMALE S/T FOR TEST CABLE DRAWING NO. : VA26-35F24F-XXXXM(See Tables) COMPANY WEBSITE : www.slkcorp.com
UNLESS OTHERWISE SPECIFIED:		APPROVED :	CUSTOMER P/N :		
1) EDGES : N/A ;		CHECKED :	SCALE : 1 : 1		
2) REMOVE ALL BURRS : N/A ;		DRAWING :	DATE : 2021-07-13		
3) SURFACE ROUGHNESS : N/A ;					
4) UNITS : mm ;					
5) DIMENSIONS TOLERANCES					
DECIMALS : .x ±5, .xx ±2, .xxx±1;					
ANGLES : ±10°.					

CUSTOMER OUTLINE DRAWING