
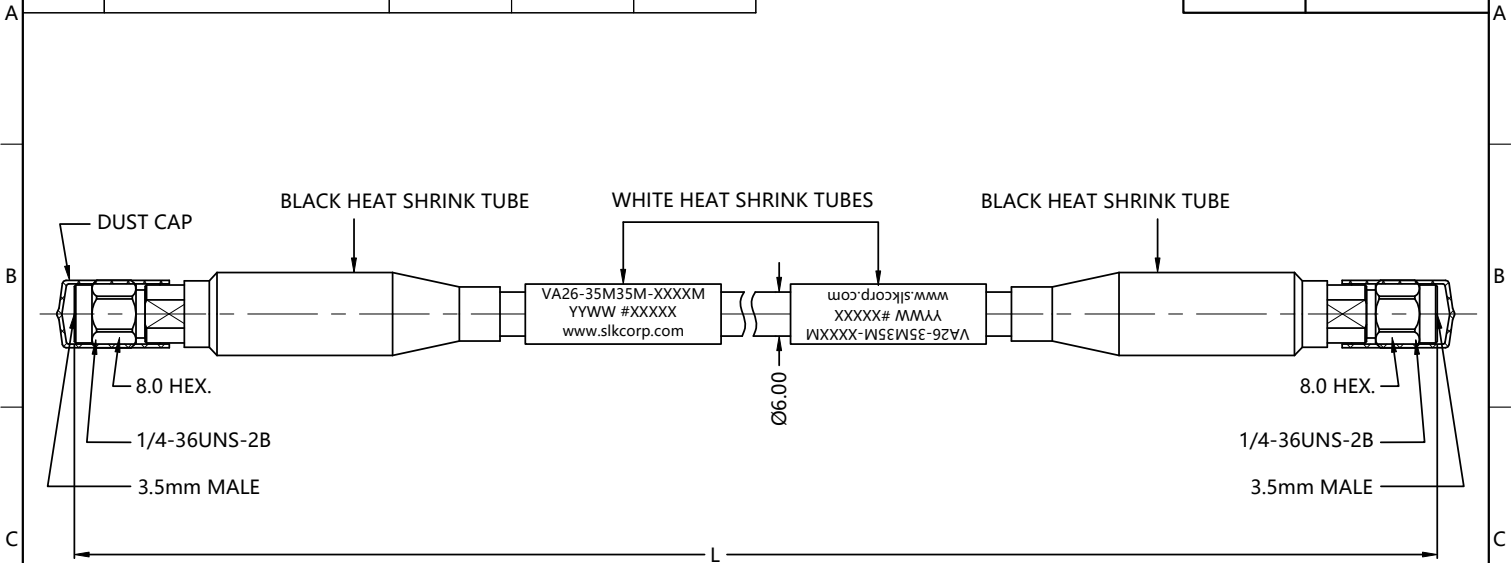


REV.	DESCRIPTION	ECN NO.	NAME	DATE	 ALL PARTS MUST MEET TO RoHS REQUIREMENTS
3	ADD DIFFERENT LENGTHS	N/A	YWD	2021-11-17	



5	VA26-35M35M-02.00M	2000 ⁺³⁰ ₋₀	<5.2
4	VA26-35M35M-01.50M	1500 ⁺³⁰ ₋₀	<4.0
3	VA26-35M35M-01.20M	1200 ⁺³⁰ ₋₀	<3.3
2	VA26-35M35M-01.00M	1000 ⁺²⁰ ₋₀	<2.9
1	VA26-35M35M-00.60M	600 ⁺¹⁰ ₋₀	<1.9
NO.	DRAWING NO.	L(LENGTH,mm)	INSERTION LOSS(dB)

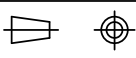

MATERIALS AND PLATING UNIT: MICRO-INCHES			
PART TYPE	PART NAME	MATERIALS	PLATING
SMA S/T MALE	BODY/SHELL	STAINLESS STEEL	PASSIVATION
	INSULATOR	PEI	N/A
	CONTACT PIN	BERYLLIUM COPPER	GOLD /COPPER
	DUST CAP	PVC	BLACK
CABLE	TEST CABLE With Red/Black PTFE Stainless Steel Spring Armor		

ELECTRICAL CHARACTERISTICS	
IMPEDANCE	50 Ω
VOLTAGE RATING	250 V(rms)
FREQUENCY RANGE	DC ~ 26.5 GHz
DIELECTRIC WITHSTANDING VOLTAGE	>750 V
INSULATION RESISTANCE	>1000 MΩ
INSERTION LOSS	See Tables
VSWR	<1.30
RF- LEAKAGE	>90 dB
MECHANICAL PHASE STABILITY	≤±5°
MECHANICAL AMPLITUDE STABILITY	<±0.05 dB

MECHANICAL CHARACTERISTICS	
MIN. BENDING RADIUS ,STATIC	30 mm
MIN. BENDING RADIUS ,REPEATED	60 mm
RECOMMENDED COUPLING TORQUE	7-10 in-lbs
COUPLING NUT RETENTION FORCE	>60 lbs
DURABILITY	>500 cycles
CABLE RETENTION FORCE	>60 lbs
CRUSH RESISTANCE	40 KN/M

ENVIRONMENTAL PARAMETER	
TEMPERATURE RANGE	-40 °C~+85 °C

CUSTOMER OUTLINE DRAWING

* CUSTOMER OUTLINE DRAWING			UNLESS OTHERWISE SPECIFIED: 1) EDGES : N/A ; 2) REMOVE ALL BURRS : N/A ; 3) SURFACE ROUGHNESS : N/A ; 4) UNITS : mm ; 5) DIMENSIONS TOLERANCES DECIMALS : .x ±5, .xx ±2, .xxx±1; ANGLES : ±10°.		THIRD ANGLE PROJECTION 	 TITLE : 3.5mm MALE S/T TO 3.5mm MALE S/T FOR TEST CABLE DRAWING NO. : VA26-35M35M-XXXXM COMPANY WEBSITE : www.slkcorp.com
APPROVED :	CUSTOMER P/N :	CHECKED :	SCALE : 1 : 1			
DRAWING :	DATE : 2021-11-17					