
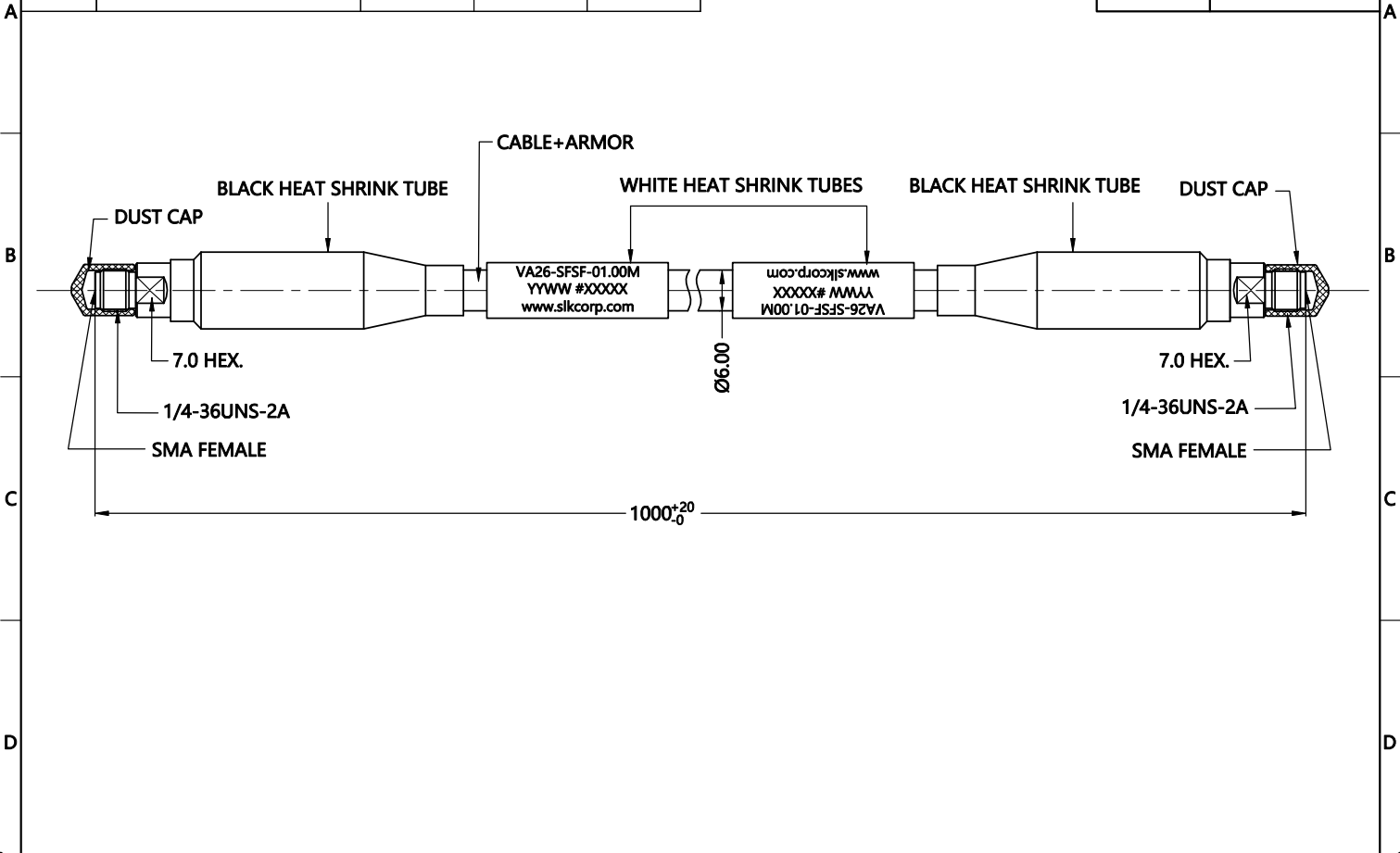


REV.	DESCRIPTION	ECN NO.	NAME	DATE	 <b>ALL PARTS MUST MEET TO RoHS REQUIREMENTS</b>
0	FIRST EDITION	N/A	HRWEI	2021-03-23	



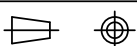

MATERIALS AND PLATING UNIT: MICRO-INCHES			
PART TYPE	PART NAME	MATERIALS	PLATING
SMA S/T FEMALE	BODY/SHELL	STAINLESS STEEL	PASSIVATION
	INSULATOR	PTFE ASTM-D-1710	N/A
	CONTACT PIN	BERYLLIUM COPPER	GOLD /COPPER
	DUST CAP	PVC	BLACK
CABLE	TEST CABLE		
ARMOR	Red/Black PTFE Stainless Steel Spring Armor		

ELECTRICAL CHARACTERISTICS	
IMPEDANCE	50 Ω
VOLTAGE RATING	250 V(rms)
FREQUENCY RANGE	DC ~ 26.5 GHz
DIELECTRIC WITHSTANDING VOLTAGE	>750 V
INSULATION RESISTANCE	>5000 MΩ
INSERTION LOSS	<3.1 dB
VSWR	<1.30
RF- LEAKAGE	>90 dB
MECHANICAL PHASE STABILITY	±±5° @26.5GHz
MECHANICAL AMPLITUDE STABILITY	<±0.05 dB

MECHANICAL CHARACTERISTICS		
MIN.	BENDING RADIUS ,STATIC	30 mm
MIN.	BENDING RADIUS ,REPEATED	60 mm
	RECOMMENDED COUPLING TORQUE	N/A
	COUPLING NUT RETENTION FORCE	N/A
	DURABILITY	>500 cycles
	CABLE RETENTION FORCE	>80 lbs
	CRUSH RESISTANCE	40 KN/M

ENVIRONMENTAL PARAMETER	
TEMPERATURE RANGE	-40 °C~+85 °C

CUSTOMER OUTLINE DRAWING

<b>* CUSTOMER OUTLINE DRAWING</b>		THIRD ANGLE PROJECTION 		
UNLESS OTHERWISE SPECIFIED: 1) EDGES : N/A ; 2) REMOVE ALL BURRS : N/A ; 3) SURFACE ROUGHNESS : N/A ; 4) UNITS : mm ; 5) DIMENSIONS TOLERANCES DECIMALS : .x ±5, .xx ±2, .xxx±1; ANGLES : ±10°.		APPROVED :	CUSTOMER P/N :	
		CHECKED :	SCALE : 1:1	DRAWING NO. : VA26-SFSF-01.00M
		DRAWING :	DATE : 2021-03-23	COMPANY WEBSITE : www.slkcorp.com