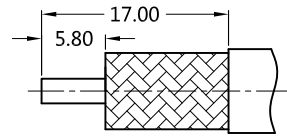
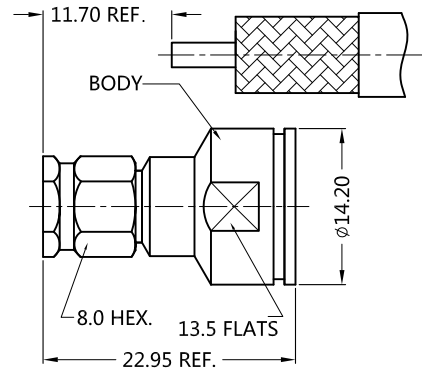


REV.	DESCRIPTION	ECN NO.	NAME	DATE
3	NEW FRAME	N/A	JING	2020-07-10

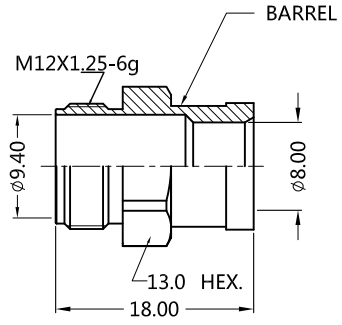
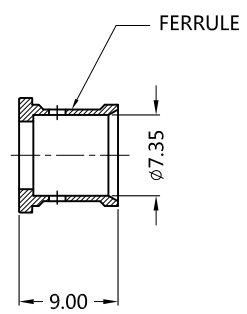
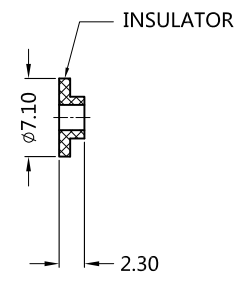
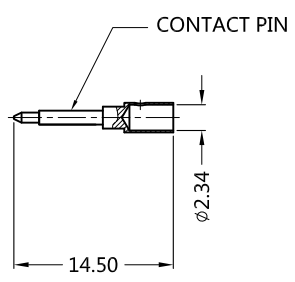
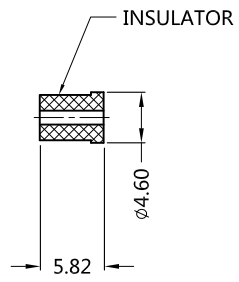


ALL PARTS MUST MEET TO RoHS REQUIREMENTS

REMARKS:
1.ADDS SIZE:11.65mm
2.CONTACT PIN & FERRULE TO SOLDER



RECOMMENDED CABLE STRIPPING DIM'S



MATERIALS AND PLATING		UNIT: MICRO-INCHES
PART NAME	MATERIALS	PLATING
BODY/SHELL	STAINLESS STEEL	PASSIVATION
INSULATOR	TEFLON MIL-P-19468	N/A
CONTACT PIN	Be-Cu C17300	GOLD 50 μ */ NICKEL/COPPER
GASKET	SILICONE	N/A
BARREL	STAINLESS STEEL	PASSIVATION
FERRULE	BRASS	GOLD 10 μ */ NICKEL/COPPER

ELECTRICAL CHARACTERISTICS	
IMPEDANCE	50 Ω
VOLTAGE RATING	335 V(rms)
FREQUENCY RANGE	0 ~ 18 GHz
DIELECTRIC WITHSTANDING VOLTAGE	> 500 V
CONTACT RESISTANCE	CENTER CONTACT
	OUTER CONTACT
INSULATION RESISTANCE	> 5000 M Ω
INSERTION LOSS	According as the cable
RF-LEAKAGE	N/A
VSWR	< 1.30
3RD INTERMODULATION	N/A

MECHANICAL CHARACTERISTICS	
FORCE TO ENGAGE AND DISENGAGE	N/A
CENTER CONTACT RETENTION FORCE	N/A
RECOMMENDED COUPLING TORQUE	7-10 in-lbs
COUPLING NUT RETENTION FORCE	> 60 lbs
DURABILITY	> 500 cycles

ENVIRONMENTAL PARAMETER	
TEMPERATURE RANGE	-55 $^{\circ}$ C ~ +125 $^{\circ}$ C

* CUSTOMER OUTLINE DRAWING

UNLESS OTHERWISE SPECIFIED:
1) EDGES : C0.15 MAX ;
2) REMOVE ALL BURRS ;
3) SURFACE ROUGHNESS : Ra1.6 ;
4) UNITS : mm ;
5) DIMENSIONS TOLERANCES
DECIMALS : .x \pm 0.3 .xx \pm 0.2 .xxx \pm 0.1 ;
ANGLES : \pm 5 $^{\circ}$.

THIRD ANGLE PROJECTION	
APPROVED :	CUSTOMER P/N :
CHECKED :	SCALE :
DRAWING :	DATE :
JING	2020-07-10
PAGE : 1/1	

TITLE : SMA MALE S/T SOLDER FOR HF-290 CABLE, 50 Ω

DRAWING NO. : 5MAM11S-A210-002

COMPANY WEBSITE : www.slkcorp.com

CUSTOMER OUTLINE DRAWING