
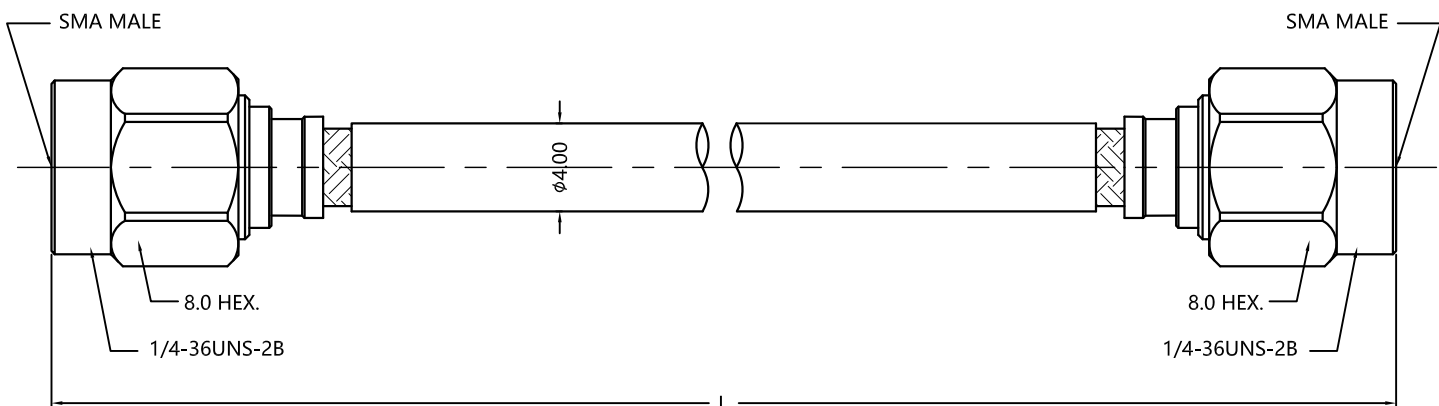


REV.	DESCRIPTION	ECN NO.	NAME	DATE	 ALL PARTS MUST MEET TO RoHS REQUIREMENTS
0	FIRST EDITION	N/A	YWD	2021-09-14	
1	ADD DIFFERENT LENGTH	N/A	YWD	2021-09-18	



5	MAMSMAMS-302-0210-01	210±3	<0.9
4	MAMSMAMS-302-0135-01	135±3	<0.75
3	MAMSMAMS-302-0105-01	105±3	<0.5
2	MAMSMAMS-302-0090-01	90±2	<0.4
1	MAMSMAMS-302-0070-01	70±2	<0.35
NO.	SLK PN.	L (mm)	INSERTION LOSS(dB)

MATERIALS AND PLATING UNIT: MICRO-INCHES			
PART TYPE	PART NAME	MATERIALS	PLATING
SMA MALE	BODY	BRASS	GOLD/NICKEL/COPPER
	INSULATOR	PTFE ASTM-D-1710	N/A
	CONTACT PIN	BERYLLIUM COPPER	GOLD/NICKEL/COPPER
CABLE	RF COAXIAL CABLE Nband-400 , FEP JACKET		
OTHER	N/A		

ELECTRICAL CHARACTERISTICS	
IMPEDANCE	50 Ω
VOLTAGE RATING	250 V(rms)
FREQUENCY RANGE	DC ~ 18 GHz
DIELECTRIC WITHSTANDING VOLTAGE	>750 V
INSULATION RESISTANCE	>5000 MΩ
INSERTION LOSS	SEE THE TABLE
VSWR	<1.35
RF- leakage	N/A
3RD INTERMODULATION	N/A

MECHANICAL CHARACTERISTICS	
CABLE RETENTION FORCE	>25 lbs
MIN. BENDING RADIUS, STATIC	20 mm
MIN. BENDING RADIUS, REPEATED	40 mm
RECOMMENDED COUPLING TORQUE	7.0~10 in-lbs
COUPLING NUT RETENTION FORCE	>60 lbs
DURABILITY	>500 cycles

ENVIRONMENTAL PARAMETER	
TEMPERATURE RANGE	-40 °C~+85 °C
PROTECTION GRADE	N/A

*** CUSTOMER OUTLINE DRAWING**

UNLESS OTHERWISE SPECIFIED:
 1) EDGES : N/A ;
 2) REMOVE ALL BURRS : N/A ;
 3) SURFACE ROUGHNESS : N/A ;
 4) UNITS : mm ;
 5) DIMENSIONS TOLERANCES
 DECIMALS : .x ±5, .xx ±2, .xxx±1;
 ANGLES : ±10°.

THIRD ANGLE PROJECTION	
APPROVED :	CUSTOMER P/N :
CHECKED :	SCALE :
DRAWING :	DATE : 2021-09-18
PAGE : 1/1	



TITLE : SMA MALE TO SMA MALE FOR Nband-400 CABLE
 DRAWING NO. : MAMSMAMS-302-XXXX-XX
 COMPANY WEBSITE : www.slkcorp.com

CUSTOMER OUTLINE DRAWING