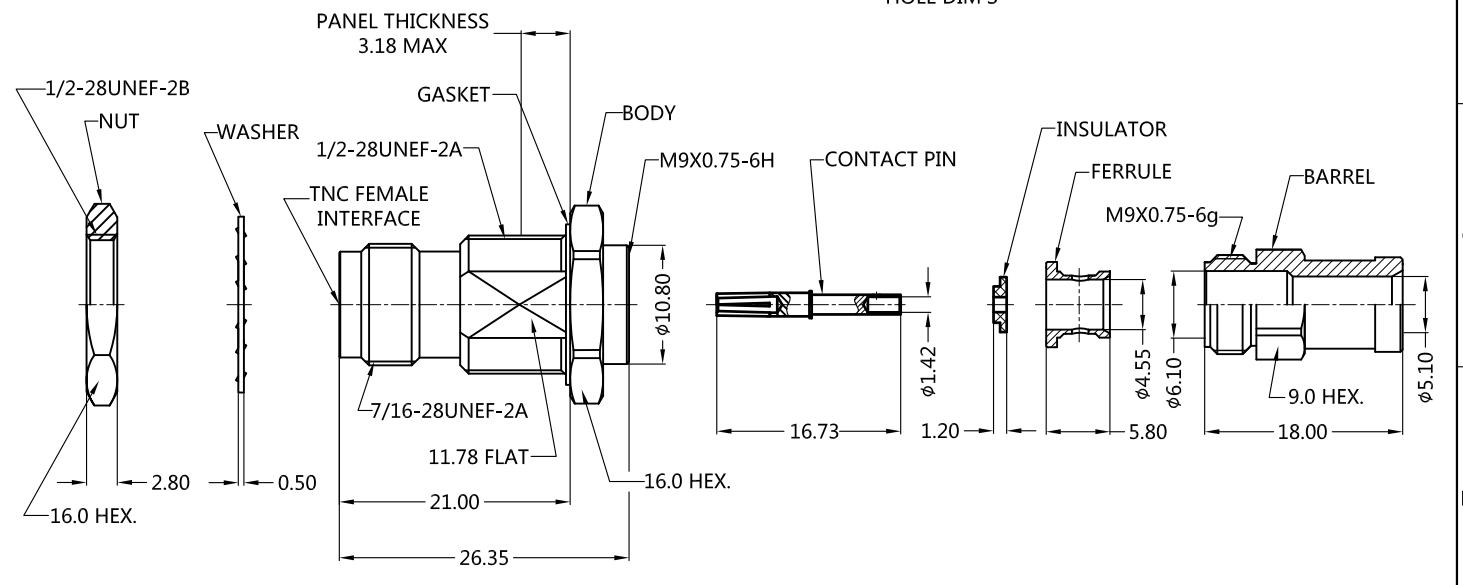
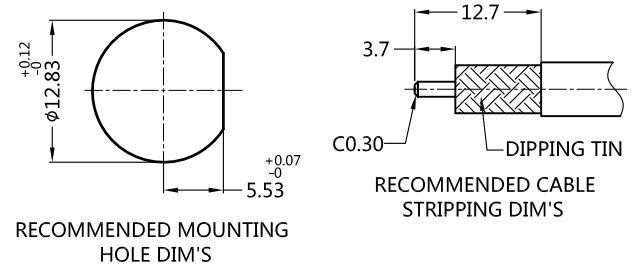


REV.	DESCRIPTION	ECN NO.	NAME	DATE
0	FIRST EDITION	N/A	Ming	2018-03-15
1	UPDATE THE DRAWING	N/A	WYJ	2019-03-22
2	UPDATE THE PLATING	N/A	WYJ	2019-03-28
3	REPLACE FRAME	N/A	Kevin.Li	2020-06-22



ALL PARTS MUST MEET TO RoHS REQUIREMENTS

REMARK:
 1.ADDS SIZE: 17.45mm
 2.CONTACT PIN&FERRULE TO SOLDER



MATERIALS AND PLATING		UNIT: MICRO-INCHES
PART NAME	MATERIALS	PLATING
NUT / BODY	BRASS	ALBALOY 100 u" / COPPER
INSULATOR	PTFE ASTM-D-1710	N/A
CONTACT PIN	Be-Cu	GOLD 50u" / NICKEL / COPPER
FERRULE	BRASS	GOLD 10u" / NICKEL / COPPER
BARREL	BRASS	ALBALOY 100 u" / COPPER
WASHER	BRASS	ALBALOY 100 u" / COPPER

ELECTRICAL CHARACTERISTICS		
IMPEDANCE	50 Ω	
VOLTAGE RATING	500V(rms)	
FREQUENCY RANGE	0 ~ 18 GHz	
DIELECTRIC WITHSTANDING VOLTAGE	1500 V	
CONTACT RESISTANCE	CENTER CONTACT	<1.5 mΩ
	OUTER CONTACT	<0.2 mΩ
INSULATION RESISTANCE	>5000MΩ	
INSERTION LOSS	<0.1x√F(GHz) dB	
VSWR	< 1.3	
3RD INTERMODULATION	N/A	

MECHANICAL CHARACTERISTICS	
FORCE TO ENGAGE AND DISENGAGE	N/A
CENTER CONTACT RETENTION FORCE	N/A
RECOMMENDED COUPLING TORQUE	N/A
COUPLING NUT RETENTION FORCE	N/A
DURABILITY	> 500 cycles

ENVIRONMENTAL PARAMETER	
TEMPERATURE RANGE	-65 °C ~ +165 °C
VIBRATION	MIL-STD 202G,Meth 204,Cond B
SHOCK	MIL-STD 202G,Meth 213,Cond G
THERMAL SHOCK	MIL-STD 202G,Meth 107,Cond B
CLIMATIC CLASS	IEC 60068 55/155/21

*** CUSTOMER OUTLINE DRAWING**

UNLESS OTHERWISE SPECIFIED:
 1) EDGES : C0.15 MAX ;
 2) REMOVE ALL BURRS ;
 3) SURFACE ROUGHNESS : Ra1.6 ;
 4) UNITS : mm ;
 5) DIMENSIONS TOLERANCES
 DECIMALS : .x ±0.3 .xx ±0.2 .xxx±0.1;
 ANGLES : ± 5°.

THIRD ANGLE PROJECTION	
APPROVED :	CUSTOMER P/N :
CHECKED :	SCALE :
DRAWING :	DATE : 2020-07-02
PAGE : 1/1	

TITLE : TNC FEMALE S/T CLAMP FOR HF-190 CABLE,BULKHEAD-FRONT MOUNT,50Ω
 DRAWING NO. : 5TCF31S-A231
 COMPANY WEBSITE : www.slkcorp.com

CUSTOMER OUTLINE DRAWING