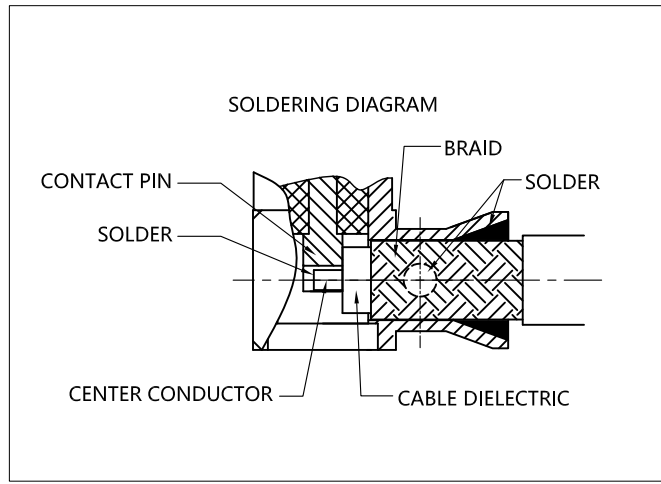
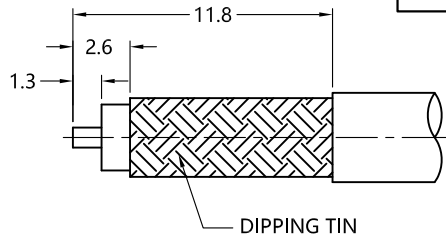
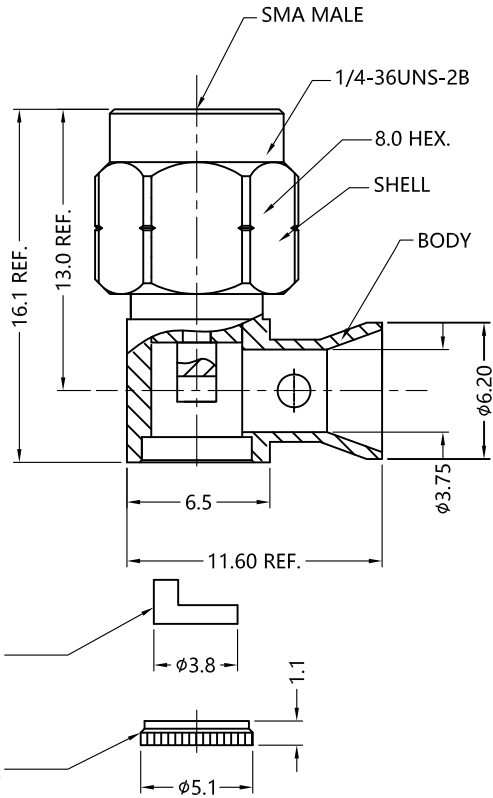


REV.	DESCRIPTION	ECN NO.	NAME	DATE
4	NEW FRAME	N/A	GUO	2020-09-08



ALL PARTS MUST MEET TO RoHS REQUIREMENTS

REMARKS:
 1. ADDS SIZE:2.8MM
 2. CONTACT PIN TO SOLDER



MATERIALS AND PLATING		UNIT: MICRO-INCHES
PART NAME	MATERIALS	PLATING
BODY	NON-MAGNETIC BRASS	ALBALOY PL.80 u"/COPPER
INSULATOR	PTFE ASTM-D-1710	N/A
CONTACT PIN	NON-MAGNETIC BRASS	SILVER PL.200 u"/COPPER

ELECTRICAL CHARACTERISTICS	
IMPEDANCE	50 Ω
VOLTAGE RATING	335 V(rms)
FREQUENCY RANGE	0 ~ 6 GHz
DIELECTRIC WITHSTANDING VOLTAGE	> 1000 V
CONTACT RESISTANCE	CENTER CONTACT < 3.0 mΩ
	OUTER CONTACT < 2.0 mΩ
INSULATION RESISTANCE	> 5000 MΩ
INSERTION LOSS	N/A
VSWR	< 1.35
3RD INTERMODULATION	N/A

MECHANICAL CHARACTERISTICS	
FORCE TO ENGAGE AND DISENGAGE	N/A
CENTER CONTACT RETENTION FORCE	> 6 lbs
RECOMMENDED COUPLING TORQUE	9-14 in-lbs
COUPLING NUT RETENTION FORCE	> 60 lbs
DURABILITY	> 500 cycles

ENVIRONMENTAL PARAMETER	
TEMPERATURE RANGE	-55 °C ~ +125 °C

CUSTOMER OUTLINE DRAWING

* CUSTOMER OUTLINE DRAWING

UNLESS OTHERWISE SPECIFIED:
 1) EDGES : C0.15 MAX ;
 2) REMOVE ALL BURRS ;
 3) SURFACE ROUGHNESS : Ra1.6 ;
 4) UNITS : mm ;
 5) DIMENSIONS TOLERANCES
 DECIMALS : .x ±0.3 .xx ±0.2 .xxx±0.1;
 ANGLES : ± 5°.

THIRD ANGLE PROJECTION		
APPROVED :	CUSTOMER P/N :	-
CHECKED :	SCALE :	3:1
DRAWING :	DATE :	2020-09-08
GUO	PAGE :	1/1

SLK
 SUPERLINK

TITLE : SMA R/A MALE SOLDER FOR
 TFLEX-402 CABLE,50Ω

DRAWING NO. :
 NM-5MAM15R-A81-010

COMPANY WEBSITE : www.slkcorp.com