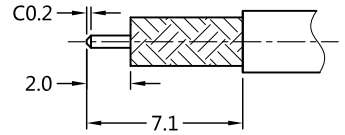


REV	DESCRIPTION	ECN NO	NAME	DATE
0	FIRST EDITION	N/A	CLOUD	2015-07-31
1	STRUCTURE CHANGED	N/A	CLOUD	2015-09-01
2	Ø2.84 was Ø2.4	N/A	CLOUD	2015-11-09
3	NEW FRAME	N/A	Liu	2020-07-04

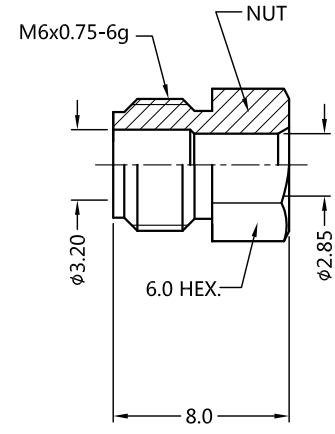
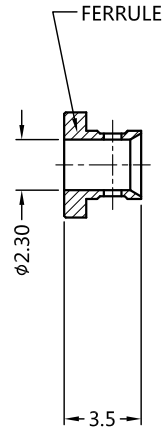
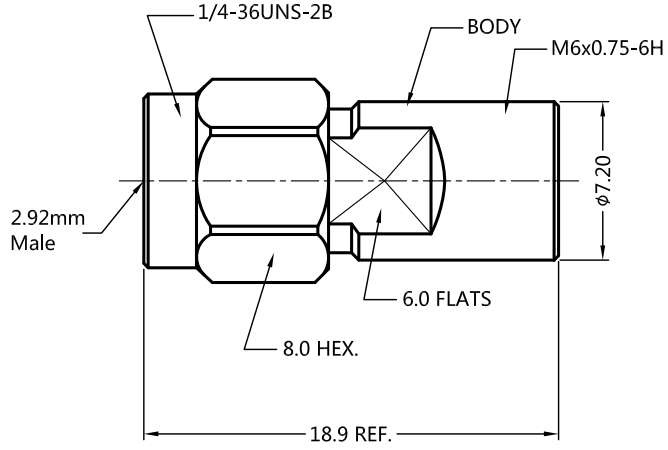


ALL PARTS MUST MEET TO RoHS REQUIREMENTS

REMARKS:
 1.CONTACT PIN TO CAPTIVE
 2. FERRULE TO SOLDER
 3.ADD SIZE : 11.8 mm



RECOMMENDED CABLE STRIPPING DIM'S



MATERIALS AND PLATING		UNIT: MICRO-INCHES	ELECTRICAL CHARACTERISTICS	
BODY/SHELL	STAINLESS STEEL	PASSIVATION	IMPEDANCE	50 Ω
CONTACT PIN	Be-Cu C17300	GOLD 50 u"/COPPER	VOLTAGE RATING	175 V(rms)
INSULATOR	PEI	N/A	FREQUENCY RANGE	DC~40 GHz
BARREL	STAINLESS STEEL	PASSIVATION	DIELECTRIC WITHSTANDING VOLTAGE	>500 V
FERRULE	BRASS C3604	GOLD 10 u"/NICKEL/COPPER	CONTACT RESISTANCE	CENTER CONTACT <3.0 mΩ
GASKET	SILICONE	RED		OUTER CONTACT <2.0 mΩ
MECHANICAL CHARACTERISTICS			INSULATION RESISTANCE	>5000 MΩ
			INSERTION LOSS	<0.05√F dB
			VSWR	<1.30
			3RD INTERMODULATION	N/A
FORCE TO ENGAGE AND DISENGAGE			ENVIRONMENTAL CHARACTERISTICS	
CENTER CONTACT RETENTION FORCE			TEMPERATURE RANGE	-40 °C~+125 °C
RECOMMENDED COUPLING TORQUE			THERMAL SHOCK	MIL- STD 202, Meth. 107,Cond. B
COUPLING NUT RETENTION FORCE			VIBRATION	MIL- STD 202, Meth. 204,Cond. D
DURABILITY			SHOCK	MIL- STD 202, Meth. 213,Cond. I

* CUSTOMER OUTLINE DRAWING

UNLESS OTHERWISE SPECIFIED:
 1) C0.15 MAX;
 2) REMOVE ALL BURRS;
 3) SURFACE ROUGHNESS : Ra1.6;
 4) UNITS:mm;
 5) DIMENSIONS TOLERANCES
 DECIMALS .x ±0.3 .xx ±0.2 .xxx±0.1
 ANGLES ±5°

THIRD ANGLE PROJECTION		 TITLE: 2.92mm MALE S/T CLAMP FOR TFLEX-405 CABLE,50Ω DRAWING NO: 5P9M15S-A82-003 COMPANY WEBSITE: www.slkcorp.com
APPROVED:	CUSTOMER P/N:	
CHECKED:	SCALE:	
DRAWING:	DATE: 2020-07-04	

CUSTOMER OUTLINE DRAWING