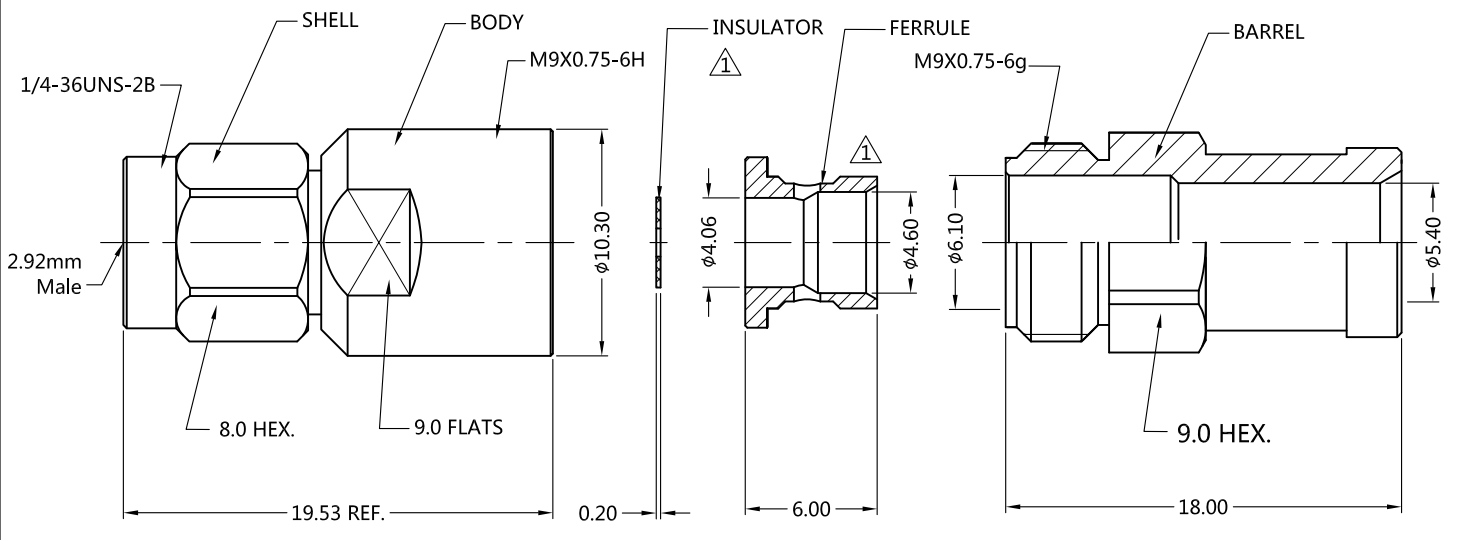
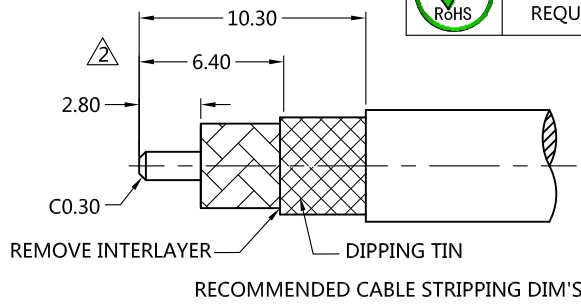


REV	DESCRIPTION	ECN NO	NAME	DATE
0	FIRST EDITION	N/A	Liu	2020-06-30
1	MODIFY STRUCTURE	N/A	Liu	2020-07-27
2	Modify stripping dimensions	N/A	Liu	2020-07-27



ALL PARTS MUST MEET TO RoHS REQUIREMENTS

REMARKS:  
 1.ADDS SIZE:11.52mm  
 2.CONTACT PIN TO CAPTIVE  
 3.FERRULE TO SOLDER



MATERIALS AND PLATING		UNIT: MICRO-INCHES
BODY/SHELL	STAINLESS STEEL 303Cu	PASSIVATION
CONTACT PIN	Be-Cu C17300	GOLD 50 u"/COPPER
INSULATOR	PEI/PTFE ASTM-D-1710	N/A
GASKET	SILICONE	RED
FERRULE	BRASS C3604	GOLD 10 u"/NICKEL/COPPER
BARREL	STAINLESS STEEL 303Cu	PASSIVATION

ELECTRICAL CHARACTERISTICS	
IMPEDANCE	50 Ω
VOLTAGE RATING	N/A
FREQUENCY RANGE	DC ~ 28 GHz
DIELECTRIC WITHSTANDING VOLTAGE	>750 V
CONTACT RESISTANCE	CENTER CONTACT <0.75 mΩ
	OUTER CONTACT <0.13 mΩ
INSULATION RESISTANCE	>1000 MΩ
INSERTION LOSS	<0.05√F dB
RF- LEAKAGE	N/A
VSWR	<1.25
3RD INTERMODULATION	N/A

MECHANICAL CHARACTERISTICS	
FORCE TO ENGAGE AND DISENGAGE	N/A
CENTER CONTACT RETENTION FORCE	>6 lbs
RECOMMENDED COUPLING TORQUE	5.3-8.9 in-lbs
COUPLING NUT RETENTION FORCE	>60 lbs
DURABILITY	>500 cycles

ENVIRONMENTAL CHARACTERISTICS	
TEMPERATURE RANGE	-40 °C~+125 °C

**\*CUSTOMER OUTLINE DRAWING**

UNLESS OTHERWISE SPECIFIED:  
 1) C0.15 MAX;  
 2) REMOVE ALL BURRS;  
 3) SURFACE ROUGHNESS : Ra1.6;  
 4) UNITS:mm;  
 5) DIMENSIONS TOLERANCES  
 DECIMALS .x ±0.3 .xx ±0.2 .xxx±0.1  
 ANGLES ±5°

THIRD ANGLE PROJECTION	
APPROVED:	CUSTOMER P/N:
CHECKED:	SCALE:
DRAWING:	DATE: 2020-07-27
COMPANY WEBSITE: www.slkcorp.com	

TITLE: 2.92mm MALE S/T CLAMP FOR MG-200 CABLE,50Ω  
 DRAWING NO: 5P9M15S-A336

CUSTOMER OUTLINE DRAWING