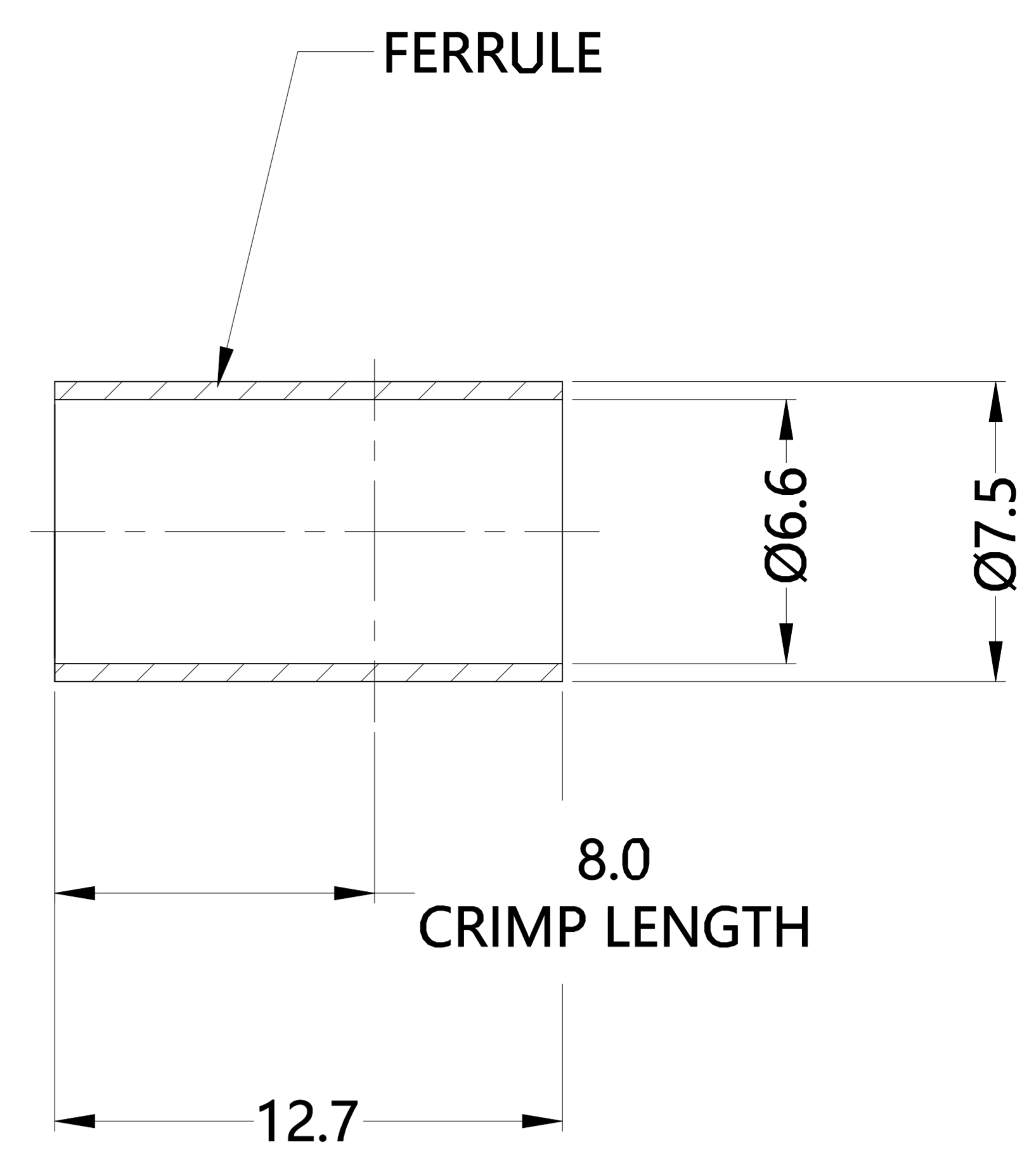
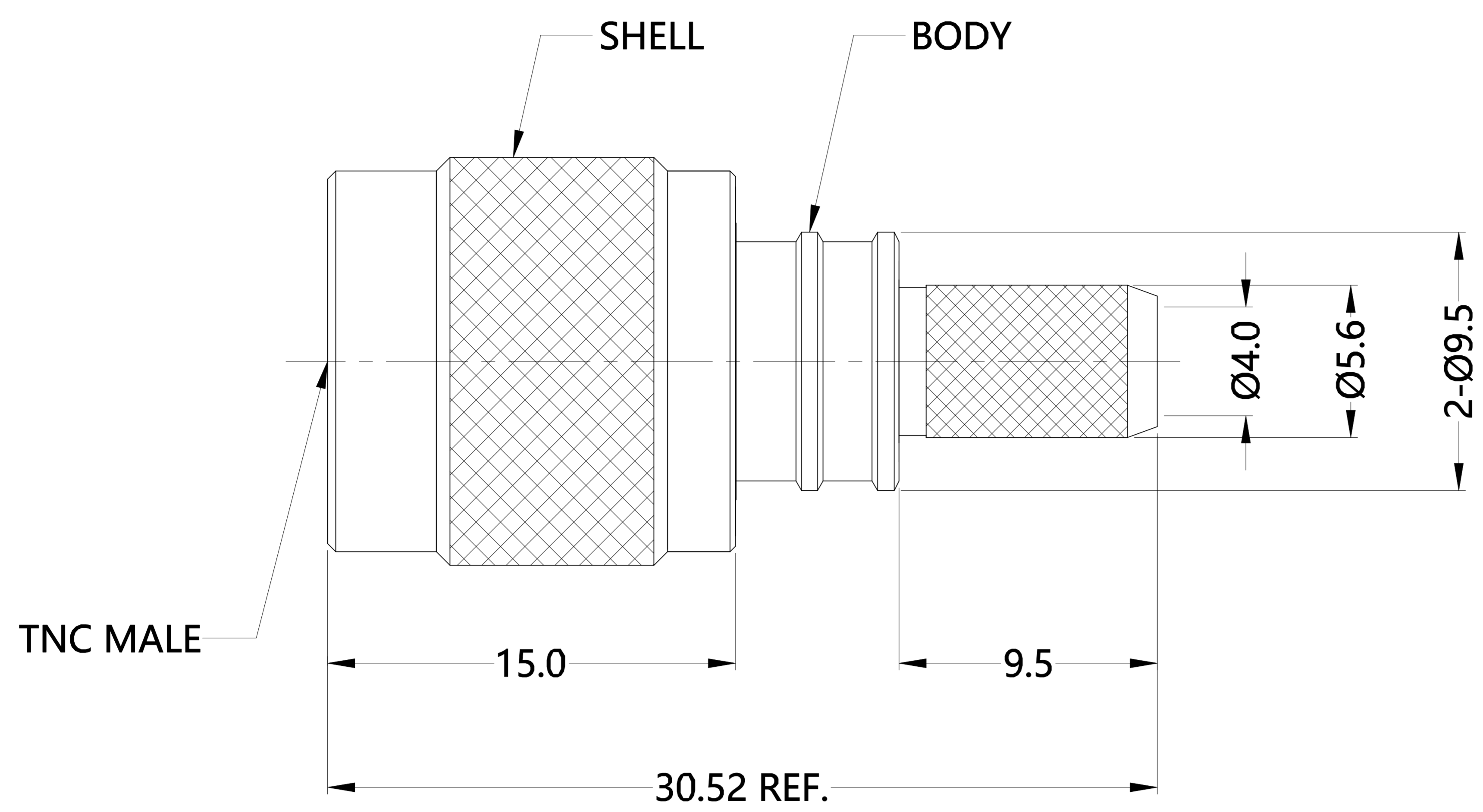


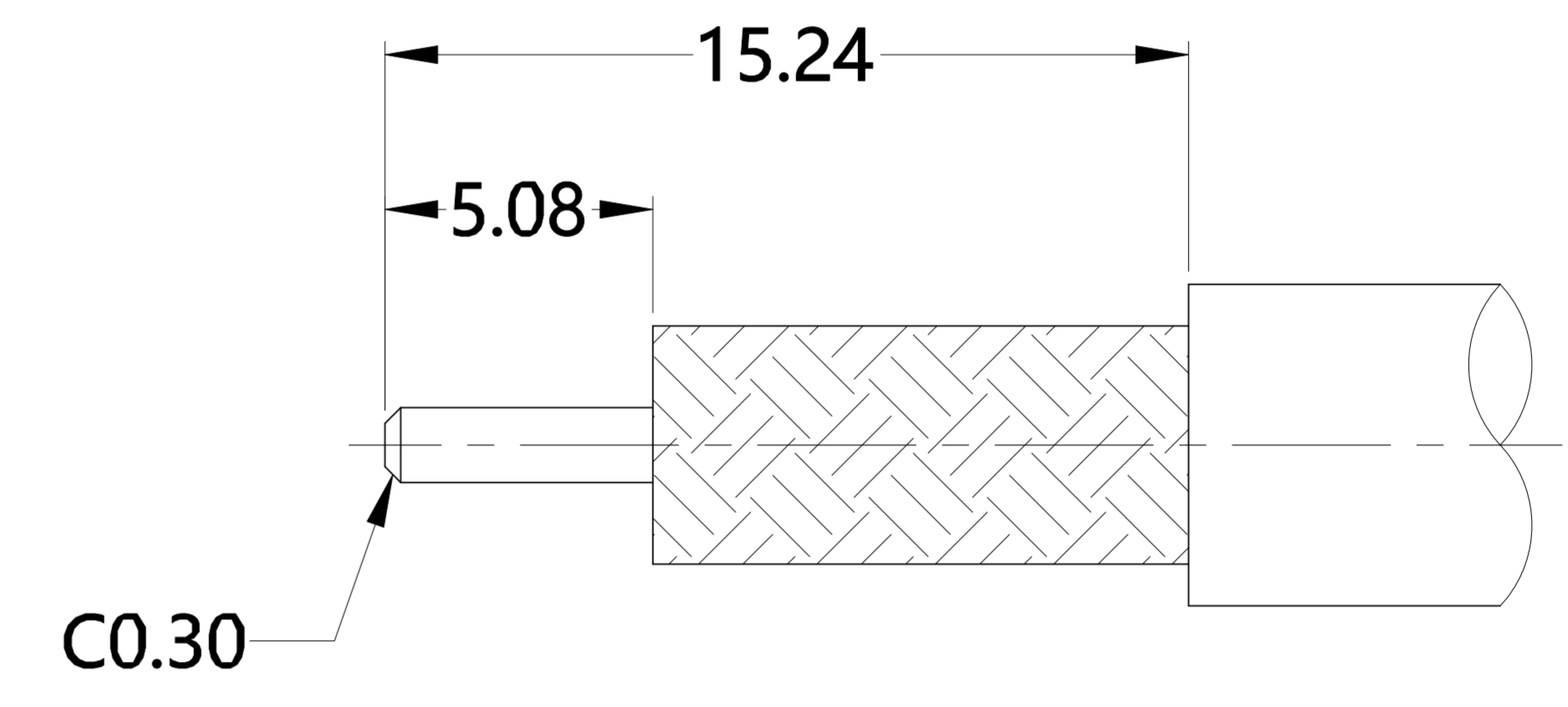
1	2	3	4	5	6
REV.	DESCRIPTION	ECN NO.	NAME	DATE	
0	FIRST EDITION	N/A	JASON	2021-06-02	



ALL PARTS MUST MEET TO RoHS REQUIREMENTS



REMARKS:
 1.ADD SIZE: 16.55mm
 2.CONTACT PIN TO CAPTIVE
 3.CRIMP FERRULE FOR .255"HEX.



RECOMMENDED CABLE STRIPPING DIM'S

MATERIALS AND PLATING		UNIT: MICRO-INCHES
PART NAME	MATERIALS	PLATING
BODY/SHELL	BRASS C3604	NICKEL 100 u"/COPPER
CONTACT PIN	Be-Cu C17300	GOLD 5 u"/NICKEL/COPPER
INSULATOR	PTFE ASTM-D-1710	N/A
FERRULE	BRASS	NICKEL 100 u"/COPPER

ELECTRICAL CHARACTERISTICS	
IMPEDANCE	50 Ω
VOLTAGE RATING	335 V(rms)
FREQUENCY RANGE	DC ~ 8 GHz
DIELECTRIC WITHSTANDING VOLTAGE	>1000 V
CONTACT RESISTANCE	CENTER CONTACT
	OUTER CONTACT
	<1.5 mΩ
	<0.2 mΩ
INSULATION RESISTANCE	>5000 MΩ
INSERTION LOSS	ACCORDING TO THE CABLE
VSWR	<1.30 @DC~6 GHz
	<1.35 @DC~8 GHz

MECHANICAL CHARACTERISTICS	
CENTER CONTACT RETENTION FORCE	> 6 lbs
RECOMMENDED COUPLING TORQUE	8~12 in.lbs
COUPLING NUT RETENTION FORCE	> 100 lbs
DURABILITY	> 500 cycles

ENVIRONMENTAL PARAMETER	
TEMPERATURE RANGE	-40 °C ~ +125 °C
VIBRATION	US MIL- STD 202G, Meth. 204, Cond. B
SHOCK	US MIL- STD-202G, Meth. 213, Cond. I
THERMAL SHOCK	US MIL- STD-202G, Meth. 107, Cond. B
CLIMATIC CLASS	IEC 60068 65/165/21

*** CUSTOMER OUTLINE DRAWING**

UNLESS OTHERWISE SPECIFIED:
 1) EDGES : C0.15 MAX ;
 2) REMOVE ALL BURRS ;
 3) SURFACE ROUGHNESS : Ra1.6 ;
 4) UNITS : mm ;
 5) DIMENSIONS TOLERANCES
 DECIMALS : .x ±0.3 .xx ±0.2 .xxx±0.1 ;
 ANGLES : ± 5°.

THIRD ANGLE PROJECTION		
APPROVED :	CUSTOMER P/N :	
CHECKED :	SCALE :	1:1
DRAWING : JASON	DATE :	2021-06-02
	PAGE :	1/1

TITLE : TNC MALE S/T FOR LMR-240 CABLE, 50Ω
 DRAWING NO. : 5TCM11S-A46-020
 COMPANY WEBSITE : www.slkcorp.com

CUSTOMER OUTLINE DRAWING