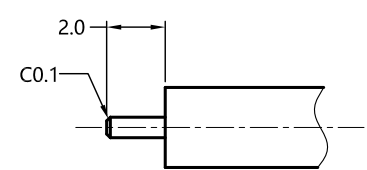


REV	DESCRIPTION	ECN NO	NAME	DATE
0	FIRST EDITION	N/A	Liu	2020-09-01
1	UPDATE THE DRAWING	N/A	HRWEI	2020-09-04

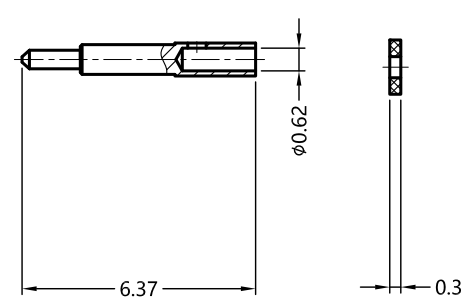
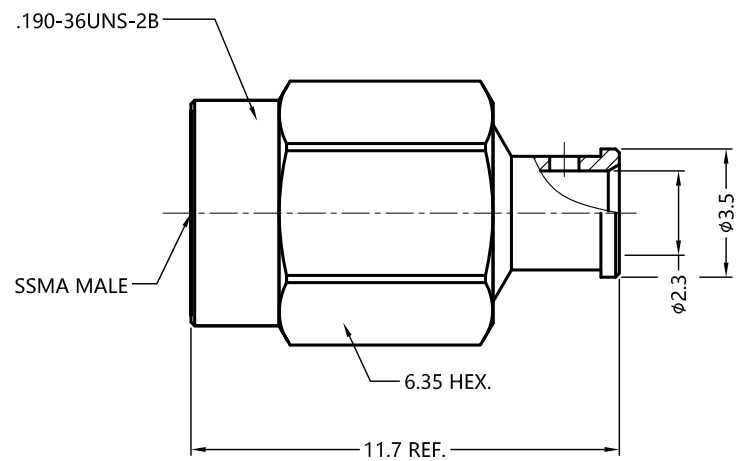


ALL PARTS MUST MEET TO RoHS REQUIREMENTS

REMARKS:
1. CONTACT PIN TO SOLDER
2. ADDS SIZE: 6.16 mm



RECOMMENDED CABLE STRIPPING DIM'S



MATERIALS AND PLATING		UNIT: MICRO-INCHES	ELECTRICAL CHARACTERISTICS	
BODY	BRASS	GOLD 15 u"/NICKEL/COPPER	IMPEDANCE	50 Ω
CONTACT PIN	BRASS	GOLD 50 u"/NICKEL/COPPER	VOLTAGE RATING	N/A
INSULATOR	PTFE ASTM-D-1710	N/A	FREQUENCY RANGE	DC~18 GHz
SHELL	STAINLESS STEEL	PASSIVATION	DIELECTRIC WITHSTANDING VOLTAGE	>500 V
			CONTACT RESISTANCE	CENTER CONTACT <4.0 mΩ
			CONTACT RESISTANCE	OUTER CONTACT <2.0 mΩ
			INSULATION RESISTANCE	>1000 MΩ
			INSERTION LOSS	<0.05 _x √F(GHz) dB
			VSWR	<1.30
MECHANICAL CHARACTERISTICS			3RD INTERMODULATION	N/A
FORCE TO ENGAGE AND DISENGAGE		N/A	ENVIRONMENTAL CHARACTERISTICS	
CENTER CONTACT RETENTION FORCE		N/A	TEMPERATURE RANGE	-40 °C~+125 °C
RECOMMENDED COUPLING TORQUE		5.3~7.1 in-lbs	THERMAL SHOCK	MIL- STD 202, Meth. 107,Cond. B
COUPLING NUT RETENTION FORCE		>22.5 lbs	VIBRATION	MIL- STD 202, Meth. 204,Cond. D
DURABILITY		>500 cycles	SHOCK	MIL- STD 202, Meth. 213,Cond. I

* CUSTOMER OUTLINE DRAWING

UNLESS OTHERWISE SPECIFIED:
1) C0.15 MAX;
2) REMOVE ALL BURRS;
3) SURFACE ROUGHNESS : Ra1.6;
4) UNITS:mm;
5) DIMENSIONS TOLERANCES
DECIMALS .x ±0.3 .xx ±0.2 .xxx±0.1
ANGLES ±5°

THIRD ANGLE PROJECTION		
APPROVED:	CUSTOMER P/N:	
CHECKED:	SCALE:	
DRAWING:	DATE: 2020-09-04	



TITLE: SSMA MALE S/T SOLDER FOR PTRSB-085 CABLE,50Ω
DRAWING NO: 5SAM15S-A668
COMPANY WEBSITE: www.slkcorp.com

CUSTOMER OUTLINE DRAWING