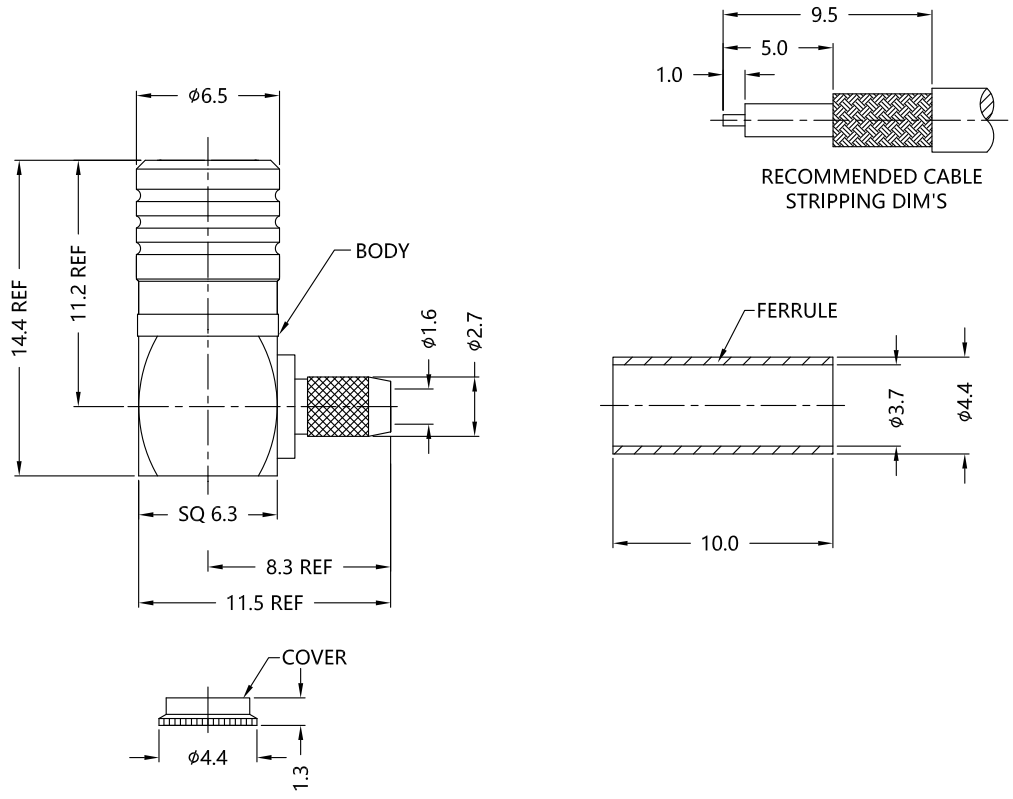


REV.	DESCRIPTION	ECN NO.	NAME	DATE
0	FIRST EDITION	N/A	FJ	2019-11-19
1	UPDATE THE DRAWING	N/A	FJ	2019-12-05
2	UPDATE FRAME	N/A	Kevin.Li	2021-01-20



ALL PARTS MUST MEET TO RoHS REQUIREMENTS

REMARKS:
1.CONTACT PIN TO SOLDER
2.CRIMP FERRULE FOR 3.81 HEX



MATERIALS AND PLATING		UNIT: MICRO-INCHES
PART NAME	MATERIALS	PLATING
BODY	BRASS	GOLD PLATING
INSULATOR	PTFE	N/A
CONTACT PIN	Be-Cu	GOLD PLATING
FERRULE	BRASS	GOLD PLATING
COVER	BRASS	GOLD PLATING

ELECTRICAL CHARACTERISTICS	
IMPEDANCE	50 Ω
VOLTAGE RATING	250 V(rms)
FREQUENCY RANGE	0 ~ 3 GHz
DIELECTRIC WITHSTANDING VOLTAGE	>750 V
CONTACT RESISTANCE	CENTER CONTACT
	OUTER CONTACT
INSULATION RESISTANCE	>1000 MΩ
INSERTION LOSS	N/A
VSWR	<1.35
3RD INTERMODULATION	N/A

MECHANICAL CHARACTERISTICS	
FORCE TO ENGAGE AND DISENGAGE	N/A
CENTER CONTACT RETENTION FORCE	N/A
RECOMMENDED COUPLING TORQUE	N/A
COUPLING NUT RETENTION FORCE	N/A
DURABILITY	≥500cycles

ENVIRONMENTAL PARAMETER	
TEMPERATURE RANGE	-40 °C~+165 °C

* CUSTOMER OUTLINE DRAWING

UNLESS OTHERWISE SPECIFIED:
1) EDGES : C0.15 MAX ;
2) REMOVE ALL BURRS ;
3) SURFACE ROUGHNESS : Ra1.6 ;
4) UNITS : mm ;
5) DIMENSIONS TOLERANCES
DECIMALS : .x ±0.3 .xx ±0.2 .xxx±0.1;
ANGLES : ± 5°.

THIRD ANGLE PROJECTION	
APPROVED :	CUSTOMER P/N :
CHECKED :	SCALE :
DRAWING :	DATE : 2021-01-20
PAGE : 1/1	

TITLE : SMB MALE R/A FOR RG316D CABLE
DRAWING NO. : 5MBM11R-A50-006
COMPANY WEBSITE : www.slkcorp.com

CUSTOMER OUTLINE DRAWING