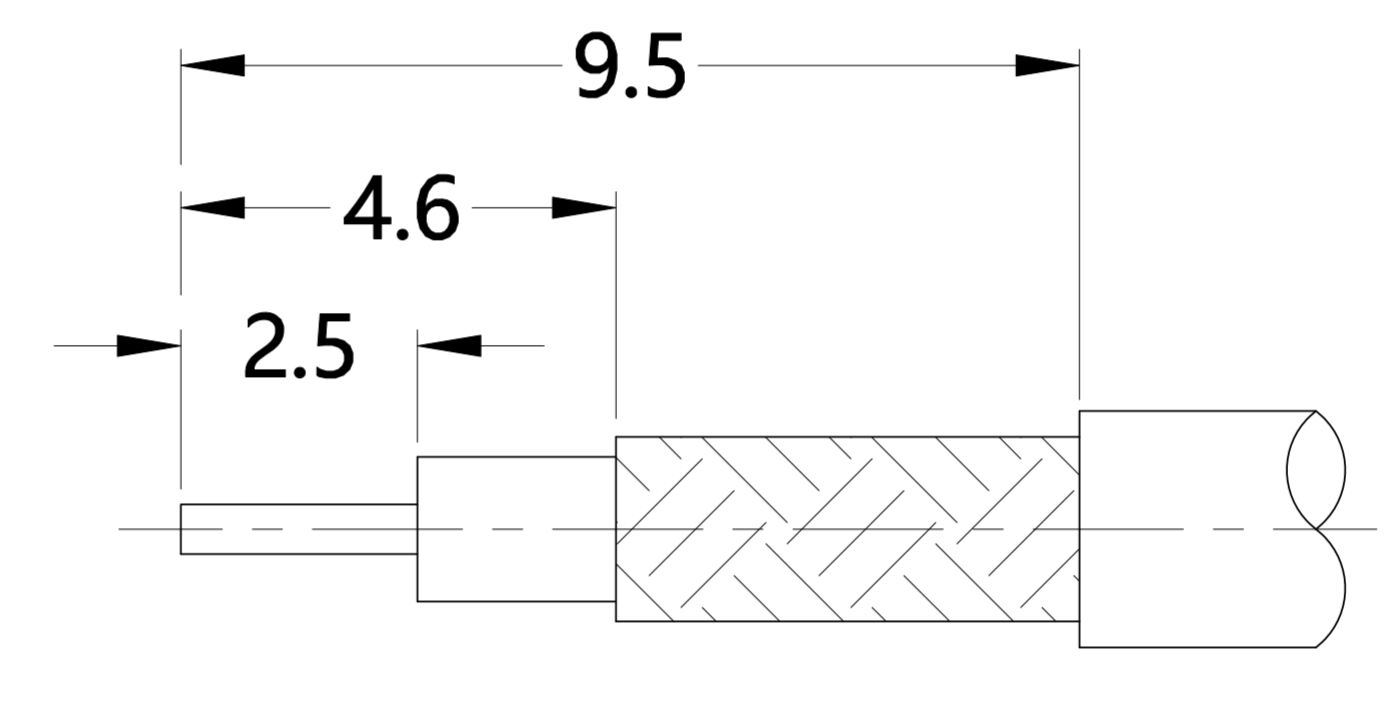
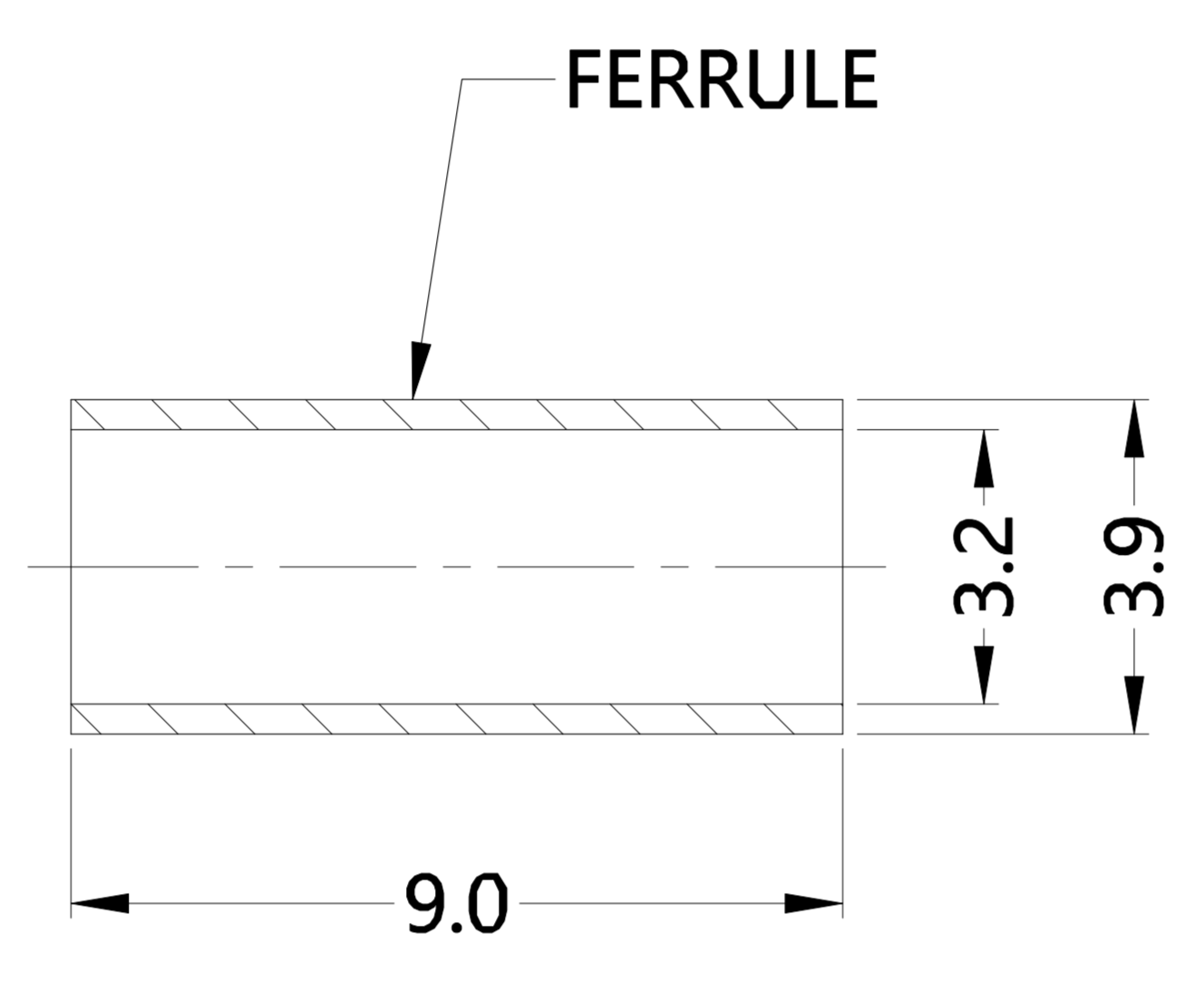
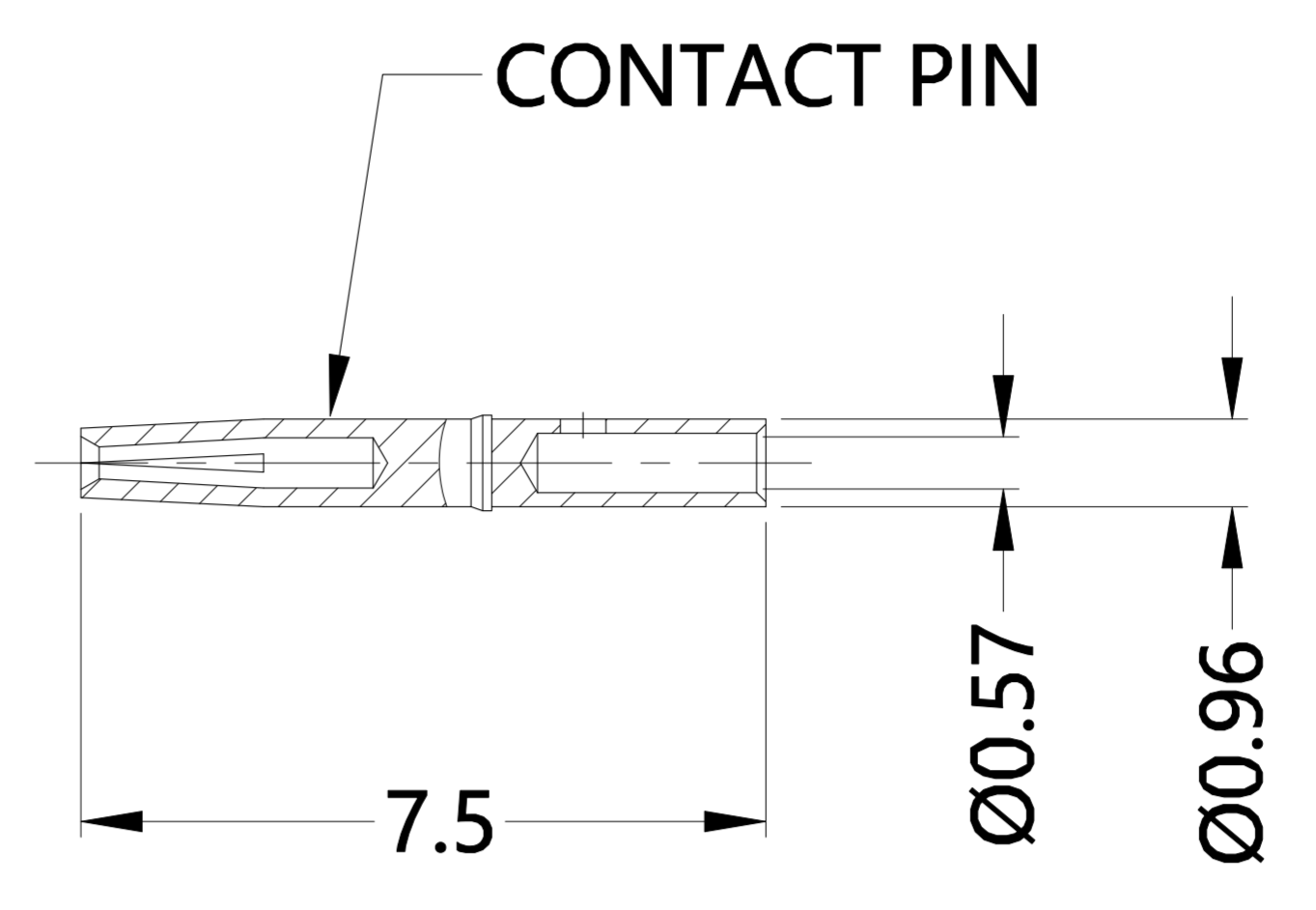
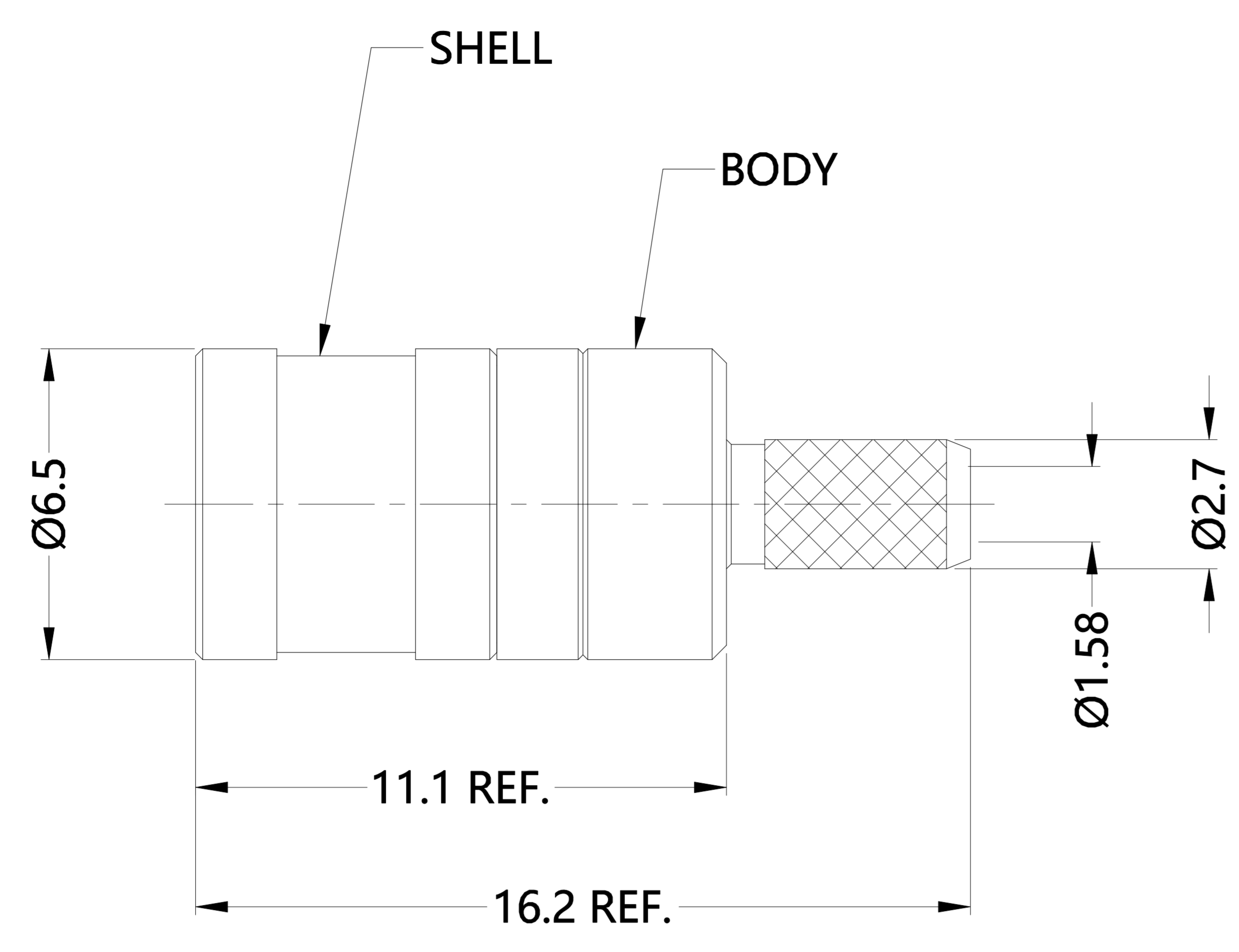


| | | | | |
|------|---------------|---------|-------|------------|
| REV. | DESCRIPTION | ECN NO. | NAME | DATE |
| 0 | FIRST EDITION | N/A | JASON | 2021-09-01 |



ALL PARTS MUST MEET TO RoHS REQUIREMENTS

REMARKS:
 1. CONTACT PIN TO SOLDER.
 2. CRIMP FERRULE FOR .130" HEX.



RECOMMENDED CABLE STRIPPING DIM'S

| MATERIALS AND PLATING | | UNIT: MICRO-INCHES |
|-----------------------|------------------------|------------------------|
| PART NAME | MATERIALS | PLATING |
| BODY | BRASS C3604 | GOLD PL./NICKEL/COPPER |
| INSULATOR | PTFE ASTM-D-1710 | N/A |
| CONTACT PIN | PHOPSHOR BRONZE C54400 | GOLD PL./NICKEL/COPPER |
| SHELL | BRASS C3602 | GOLD PL./NICKEL/COPPER |
| FERRULE | BRASS | GOLD PL./NICKEL/COPPER |

| ELECTRICAL CHARACTERISTICS | |
|---------------------------------|------------------------|
| IMPEDANCE | 50 Ω |
| VOLTAGE RATING | 335 V(rms) |
| FREQUENCY RANGE | DC ~ 4.5 GHz |
| DIELECTRIC WITHSTANDING VOLTAGE | >2500 V (DC) |
| CONTACT RESISTANCE | CENTER CONTACT <6.0 mΩ |
| | OUTER CONTACT <1.0 mΩ |
| INSULATION RESISTANCE | >1000 MΩ |
| INSERTION LOSS | < 0.25 dB |
| VSWR | <1.50 |
| 3RD INTERMODULATION | N/A |

| MECHANICAL CHARACTERISTICS | |
|--------------------------------|--------------|
| FORCE TO ENGAGE | < 14 lbs |
| FORCE TO DISENGAGE | 2~14 lbs |
| CENTER CONTACT RETENTION FORCE | > 4 lbs |
| DURABILITY | > 500 cycles |

| ENVIRONMENTAL PARAMETER | |
|-------------------------|----------------|
| TEMPERATURE RANGE | -40 °C~+125 °C |

* CUSTOMER OUTLINE DRAWING

UNLESS OTHERWISE SPECIFIED:
 1) EDGES : C0.15 MAX ;
 2) REMOVE ALL BURRS ;
 3) SURFACE ROUGHNESS : Ra1.6 ;
 4) UNITS : mm ;
 5) DIMENSIONS TOLERANCES
 DECIMALS : .x ±0.3 .xx ±0.2 .xxx±0.1;
 ANGLES : ± 5°.

| | |
|------------------------|-------------------|
| THIRD ANGLE PROJECTION | |
| APPROVED : | CUSTOMER P/N : |
| CHECKED : | SCALE : |
| DRAWING : | DATE : 2021-09-01 |
| | PAGE : 1/1 |

TITLE : SMB MALE S/T FOR RG316 CABLE, 50Ω
 DRAWING NO. : 5MBM11S-A02-037
 COMPANY WEBSITE : www.slkcorp.com

CUSTOMER OUTLINE DRAWING