
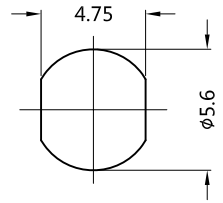
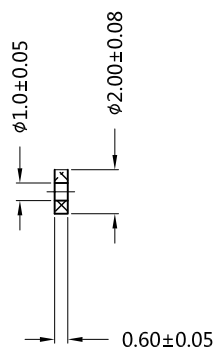
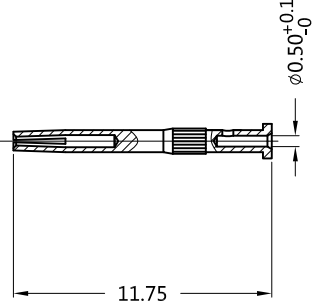
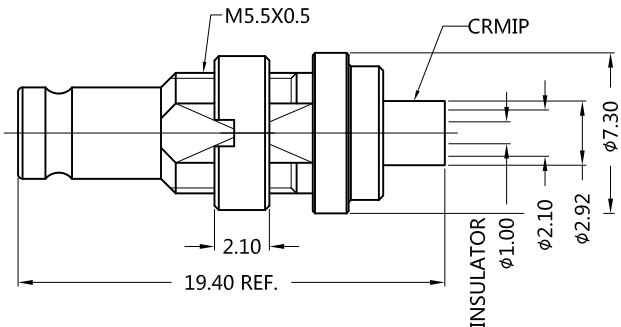
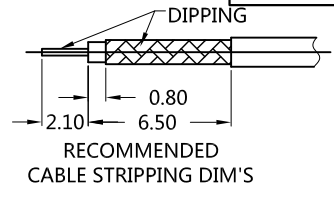
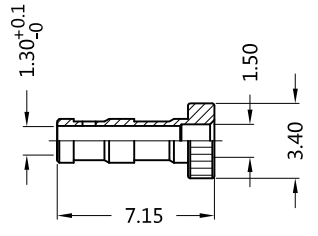


REV.	DESCRIPTION	ECN NO.	NAME	DATE	 ALL PARTS MUST MEET TO RoHS REQUIREMENTS
5	UPDATE THE DRAWING	N/A	MING	2019-04-16	
6	NEW FRAME	N/A	JING	2020-05-14	

REMARKS:
 1.CONTACT PIN TO SOLDER
 2.OUTER CONTACT TO SOLDER
 3.CRIMPED FERRULE HEX. CRIMP SIZE 2.5mm HEX.



RECOMMENDED PANEL HOLE DIM'S



MATERIALS AND PLATING		UNIT: MICRO-INCHES
PART NAME	MATERIALS	PLATING
BODY	BRASS C3604	GOLD PL.8u"/NICKEL/COPPER
INSULATOR	PTFE ASTM-D-1710	N/A
CONTACT PIN	BERYLLIUM COPPER	GOLD PL.30u"/NICKEL/COPPER
BARREL	BRASS 3602	GOLD PL.8u"/NICKEL/COPPER
NUT	BRASS 3604	NICKEL/COPPER
FERRULE	BRASS 3604	GOLD PL.8u"/NICKEL/COPPER


ELECTRICAL CHARACTERISTICS	
IMPEDANCE	50 Ω
VOLTAGE RATING	250 V(rms)
FREQUENCY RANGE	0 ~ 4 GHz
DIELECTRIC WITHSTANDING VOLTAGE	>750V
CONTACT RESISTANCE	CENTER CONTACT <10.0 mΩ
	OUTER CONTACT <3.0 mΩ
INSULATION RESISTANCE	>200 MΩ
INSERTION LOSS	N/A
RF-LEAKAGE	N/A
WSWR	<1.25@DC-2.2 GHZ
3RD INTERMODULATION	N/A

MECHANICAL CHARACTERISTICS	
CABLE RETENTION FORCE	N/A
CENTER CONTACT RETENTION FORCE	N/A
RECOMMENDED COUPLING TORQUE	N/A
COUPLING NUT RETENTION FORCE	N/A
DURABILITY	>500 cycles

ENVIRONMENTAL PARAMETER	
TEMPERATURE RANGE	-65 °C ~ +165 °C
INTERFACE STANDARD	IEC61169-29

* CUSTOMER OUTLINE DRAWING

UNLESS OTHERWISE SPECIFIED:
 1) EDGES : C0.15 MAX ;
 2) REMOVE ALL BURRS ;
 3) SURFACE ROUGHNESS : Ra1.6 ;
 4) UNITS : mm ;
 5) DIMENSIONS TOLERANCES
 DECIMALS : .x ±0.3 .xx ±0.2 .xxx±0.1;
 ANGLES : ± 5°.

THIRD ANGLE PROJECTION		 TITLE : 1.0/2.3 FEMALL S/T FOR phi 1.37 CABLE DRAWING NO. : 5A1F15S-A72 COMPANY WEBSITE : www.slkcorp.com
APPROVED :	CUSTOMER P/N :	
CHECKED :	SCALE : 3 : 1	
DRAWING : JING	DATE : 2019-04-16	
PAGE : 1/1		

CUSTOMER OUTLINE DRAWING