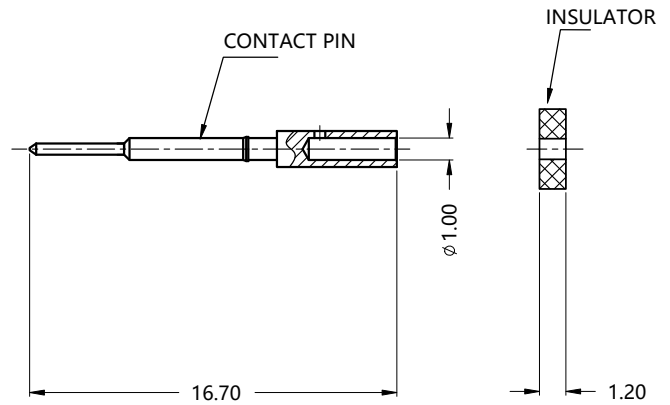
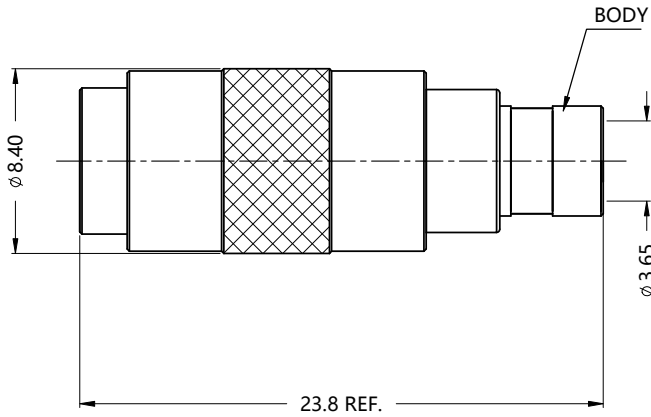
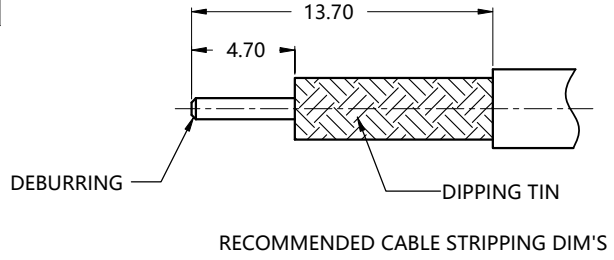
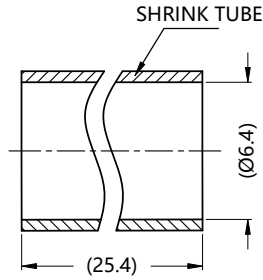


REV.	DESCRIPTION	ECN NO.	NAME	DATE
0	MODIFY PACKING MATERIAT NO	N/A	HYH	2017-07-06
1	NEW FRAME	N/A	JING	2020-05-19
2	ADD SHRINK TUBE	N/A	Liu	2021-05-17



ALL PARTS MUST MEET TO RoHS REQUIREMENTS

REMARKS:
1. ADDS SIZE: 14.10mm
2. CONTACT PIN TO SOLDER



MATERIALS AND PLATING		UNIT: MICRO-INCHES
PART NAME	MATERIALS	PLATING
BODY	NON-MAGNETIC BRASS	ALBALOY 120u"/Cu 120u"/COPPER
INSULATOR	PTFE ASTM-D-1710	N/A
CONTACT PIN	NON MAGNETIC BRASS	SILVER 200 u"/COPPER
OUT CONTACT	NON-MAGNETIC BE-CU	ALBALOY 80"/COPPER
SHELL	BRASS C3604	ALBALOY 80"/COPPER
RING	BRASS C3602	ALBALOY 80"/COPPER

ELECTRICAL CHARACTERISTICS	
IMPEDANCE	50 Ω
VOLTAGE RATING	335 V(rms)
FREQUENCY RANGE	0 ~ 6 GHz
DIELECTRIC WITHSTANDING VOLTAGE	>1000 V
CONTACT RESISTANCE	CENTER CONTACT <3.0 mΩ
	OUTER CONTACT <2.5 mΩ
INSULATION RESISTANCE	>5000 MΩ
INSERTION LOSS	ACCORDING AS THE CABLE
RF-LEAKAGE	N/A
VSWR	<1.30 @0 - 3 GHz
3RD INTERMODULATION	<-150dbc@900MHz&1800MHz 2x43dbm (STATIC TESTING)

MECHANICAL CHARACTERISTICS	
FORCE TO ENGAGE	<25 N
FORCE TO DISENGAGE	3-25 N
CENTER CONTACT RETENTION FORCE	N/A
INTERFACE RETENTION FORCE	> 60 N
DURABILITY	>100 cycles

ENVIRONMENTAL PARAMETER	
TEMPERATURE RANGE	-40 °C~+125 °C

* CUSTOMER OUTLINE DRAWING

UNLESS OTHERWISE SPECIFIED:
1) EDGES : C0.15 MAX ;
2) REMOVE ALL BURRS ;
3) SURFACE ROUGHNESS : Ra1.6 ;
4) UNITS : mm ;
5) DIMENSIONS TOLERANCES
DECIMALS : .x ±0.2 .xx ±0.1 .xxx±0.05;
ANGLES : ± 3°.

THIRD ANGLE PROJECTION	
APPROVED :	CUSTOMER P/N :
CHECKED :	SCALE :
DRAWING :	DATE : 2021-05-17
PAGE : 1/1	

TITLE : 1.0/2.3 MALE SOLDER S/T FOR TFT-402 CABLE,50Ω

DRAWING NO. : 5A1M15S-S02-003

COMPANY WEBSITE : www.slkcorp.com

CUSTOMER OUTLINE DRAWING