
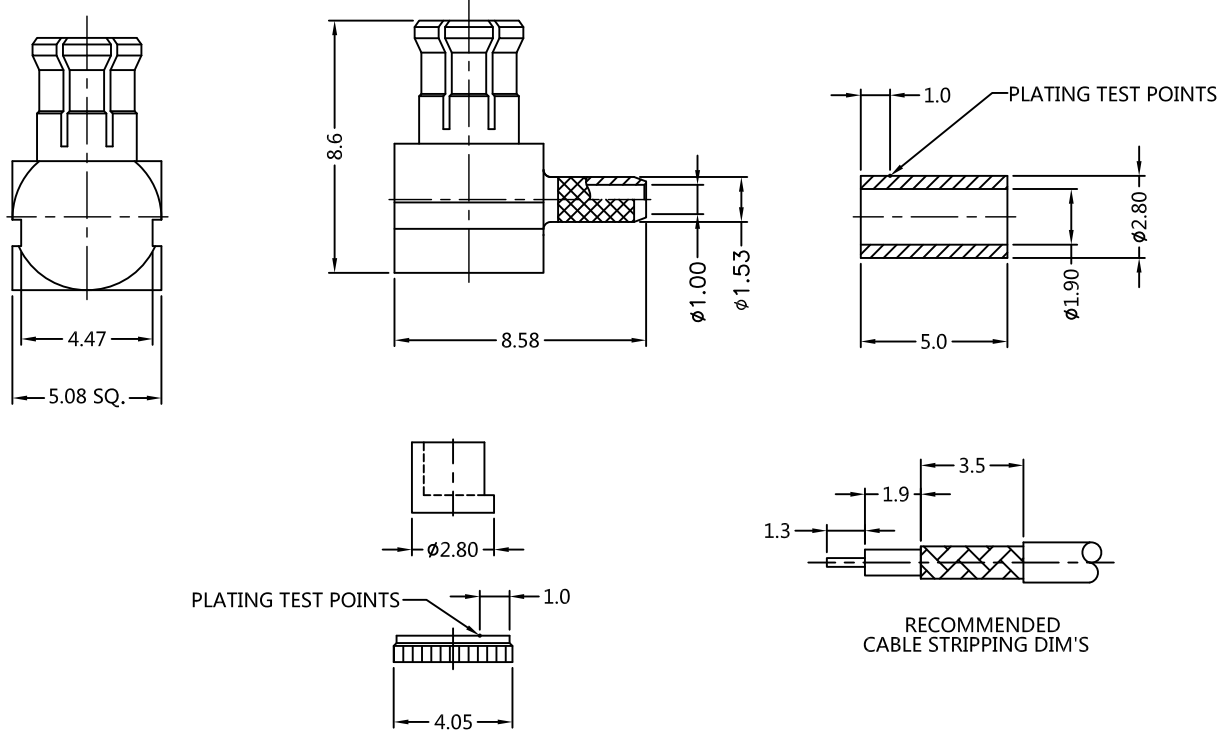


REV.	DESCRIPTION	ECN NO.	NAME	DATE	 ALL PARTS MUST MEET TO RoHS REQUIREMENTS
A3	ADD PLATING THICKNESS	N/A	YWD	2017-06-21	
A4	NEW FRAME	N/A	LDH	2020-6-30	

1. CRIMPED FERRULE  
HEX. CRIMP SIZE .095"
2. CONTACT PIN TO SOLDER



MATERIALS AND PLATING		UNIT: MICRO-INCHES
PART NAME	MATERIALS	PLATING
BODY	BRASS	GOLD5u"/NICKEL100-200u"/COPPER50u"
CONTACT PIN	BRASS C3604	GOLD15u"/NICKEL100-200u"/COPPER50u"
INSULATOR	PTFE ASTM-D-1710	N/A
FERRULE	BRASS	GOLD1u"/NICKEL100-200u"/COPPER50u"
COVER	BRASS	GOLD3u"/NICKEL100-200u"/COPPER50u"
OUT CONTACT	BERYLLIUM COPPER	GOLD5u"/NICKEL100-200u"/COPPER50u"
INSULATOR	POM	N/A

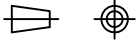
ELECTRICAL CHARACTERISTICS	
IMPEDANCE	50 Ω
VOLTAGE RATING	170 V(rms)
FREQUENCY RANGE	0 ~ 6 GHz
DIELECTRIC WITHSTANDING VOLTAGE	> 500 V
CONTACT RESISTANCE	CENTER CONTACT
	OUTER CONTACT
INSULATION RESISTANCE	> 1000 MΩ
VSWR SINGLE	< 1.25(0~4GHZ) SINGLE < 1.35(0~6GHZ) SINGLE
INSERTION LOSS	N/A
3RD INTERMODULATION	N/A

MECHANICAL CHARACTERISTICS	
SEPARATION FORCE	1.8~4.5 lbs
CENTER CONTACT RETENTION FORCE	> 2.25 lbs
RECOMMENDED COUPLING TORQUE	N/A
COUPLING NUT RETENTION FORCE	N/A
DURABILITY	> 500 cycles

ENVIRONMENTAL PARAMETER	
TEMPERATURE RANGE	-55 °C~+85 °C
PROTECTION GRADE	N/A
THERMAL SHOCK	US MIL- STD 202, METH. 107,COND.C
VIBRATION	US MIL- STD 202, METH. 204,COND. D
CORROSION	US MIL- STD 202, METH. 101,COND. B

**\* CUSTOMER OUTLINE DRAWING**

UNLESS OTHERWISE SPECIFIED:  
 1) EDGES : C0.15 MAX ;  
 2) REMOVE ALL BURRS ;  
 3) SURFACE ROUGHNESS : Ra1.6 ;  
 4) UNITS : mm ;  
 5) DIMENSIONS TOLERANCES  
 DECIMALS : .x ±0.3 .xx ±0.2 .xxx±0.1;  
 ANGLES : ± 5°.

THIRD ANGLE PROJECTION		
APPROVED :	CUSTOMER P/N :	
CHECKED :	SCALE :	
DRAWING :	DATE :	
	LDH	PAGE : 1/1



TITLE : MCX MALE R/A FOR Ø1.37 CABLE,50Ω  
 DRAWING NO. : 5MXM11R-A72  
 COMPANY WEBSITE : www.slkcorp.com

CUSTOMER OUTLINE DRAWING