

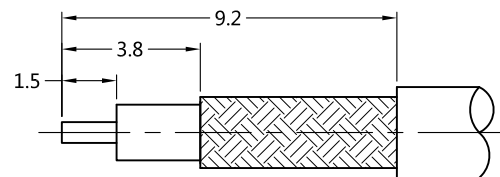
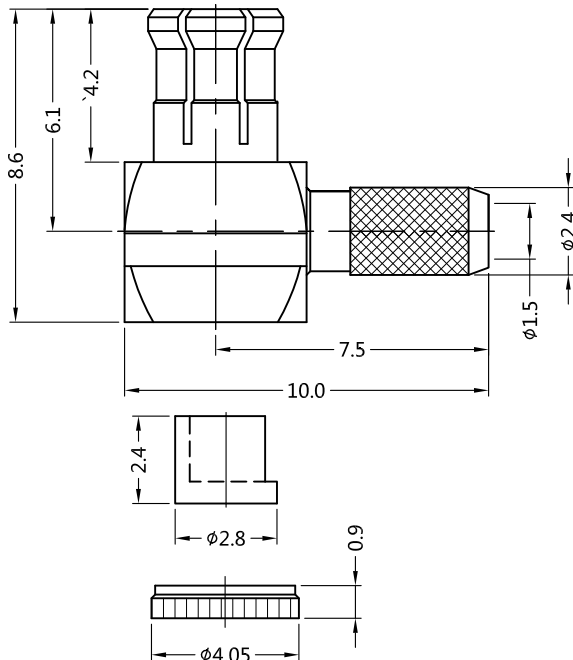
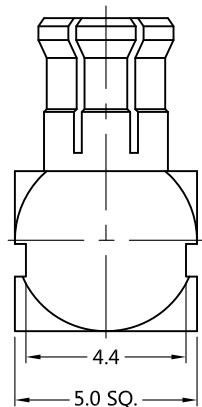
REV.	DESCRIPTION	ECN NO.	NAME	DATE
1	UPDATE DRAWING	N/A	ZLX	2018-08-15
2	NEW FRAME	N/A	LDH	2020-6-20



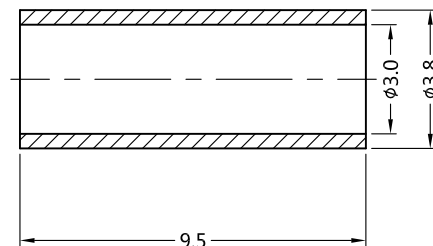
ALL PARTS MUST MEET TO RoHS REQUIREMENTS

REMARK:

- CRIMPED FERRULE HEX. CRIMP SIZE .128"
- CONTACT PIN TO SOLDER



RECOMMENDED CABLE STRIPPING DIM'S



MATERIALS AND PLATING UNIT: MICRO-INCHES			ELECTRICAL CHARACTERISTICS	
PART NAME	MATERIALS	PLATING		
OUTER CONTACT	BE-CU	GOLD 3u"/NICKEL/COPPER	IMPEDANCE	50 Ω
CONTACT PIN	BRASS	GOLD 30u"/NICKEL/COPPER	VOLTAGE RATING	N/A
INSULATOR	PTFE ASTM-D-1710	N/A	FREQUENCY RANGE	0 ~ 6 GHz
FERRULE	BRASS	GOLD 3u"/NICKEL/COPPER	DIELECTRIC WITHSTANDING VOLTAGE	>500 V
BODY	BRASS	GOLD 3u"/NICKEL/COPPER	CONTACT RESISTANCE	CENTER CONTACT <5.0 mΩ
COVER	BRASS	GOLD 3u"/NICKEL/COPPER		OUTER CONTACT <2.5 mΩ
			INSULATION RESISTANCE	>1000 MΩ
			INSERTION LOSS	ACCORDING AS THE CABLE
			VSWR	<1.2@0-4 GHz <1.25@4-6 GHz
			RF-LEAKAGE	N/A
			3RD INTERMODULATION	N/A
MECHANICAL CHARACTERISTICS			ENVIRONMENTAL PARAMETER	
ENGAGEMENT FORCE	<14 lbs		TEMPERATURE RANGE	-40 °C~+125 °C
SEPARATION FORCE	1.8- 4.5 lbs			
CENTER CONTACT RETENTION FORCE	>2.25 lbs			
CABLE RETENTION FORCE	15 lbs			
DURABILITY	>500cycles			

\* CUSTOMER OUTLINE DRAWING

UNLESS OTHERWISE SPECIFIED:

- EDGES : C0.15 MAX ;
- REMOVE ALL BURRS ;
- SURFACE ROUGHNESS : Ra1.6 ;
- UNITS : mm ;
- DIMENSIONS TOLERANCES  
DECIMALS : .x ±0.3 .xx ±0.2 .xxx±0.1;  
ANGLES : ± 5°.

THIRD ANGLE PROJECTION



APPROVED :

CUSTOMER P/N :

CHECKED :

SCALE :

DRAWING :

LDH

DATE : 2020-6-20

PAGE : 1/1



TITLE : MCX MALE R/A CRIMP FOR LMR-100A CABLE ,50Ω

DRAWING NO. : 5MXM11R-A268-001

COMPANY WEBSITE : www.silkcorp.com

CUSTOMER OUTLINE DRAWING