

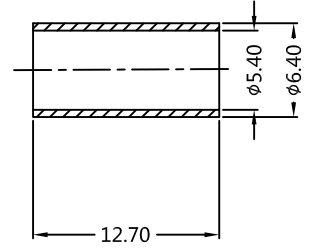
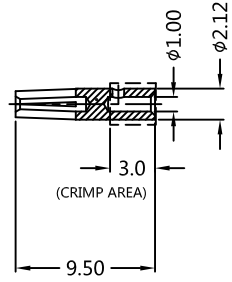
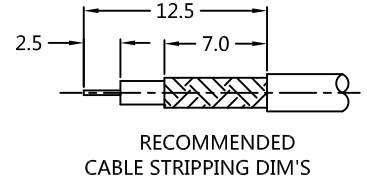
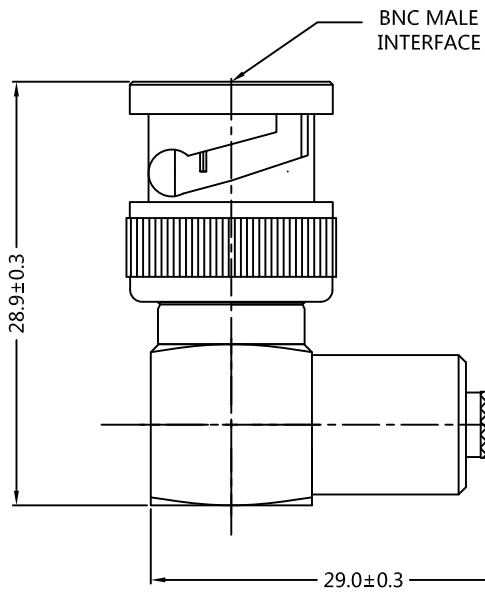
REV.	DESCRIPTION	ECN NO.	NAME	DATE
A1	NEW FRAME	N/A	JING	2020-07-07



ALL PARTS MUST MEET TO RoHS REQUIREMENTS

REMARKS:

1. CRIMPED CONTACT PIN HEX. CRMIP SIZE .071"
2. CRIMPED FERRULE HEX. CRMIP SIZE .216"



MATERIALS AND PLATING		UNIT: MICRO-INCHES
PART NAME	MATERIALS	PLATING
BODY	BRASS C3604	NICKEL 150u"/COPPER
INSULATOR	TEFLON MIL-P-19468	N/A
CONTACT PIN	PHOSPHOR BRONZE +BRASS C3604	GOLD 5u"/NICKEL/COPPER
FERRULE/SHELL	BRASS C3602	NICKEL 150u"/COPPER
GASKET	SILICONE	N/A
C RING	SK5	NICKEL 100u" /COPPER
SPRING RING	SWP	GALVANIZED
RING	SK5	NICKEL 150u"/COPPER

ELECTRICAL CHARACTERISTICS	
IMPEDANCE	50 Ω
VOLTAGE RATING	500 V(rms)
FREQUENCY RANGE	0 ~ 4 GHz
DIELECTRIC WITHSTANDING VOLTAGE	>1500 V
CONTACT RESISTANCE	CENTER CONTACT <1.5 mΩ
	OUTER CONTACT <0.2 mΩ
INSULATION RESISTANCE	>5000 MΩ
INSERTION LOSS	<0.3 @ 3 GHz
RF-LEAKAGE	N/A
VSWR	<1.35 @ 0~4 GHz
3RD INTERMODULATION	N/A

MECHANICAL CHARACTERISTICS	
FORCE TO ENGAGE AND DISENGAGE	N/A
CENTER CONTACT RETENTION FORCE	>6 lbs
CABLE RETENTION FORCE	40 lbs
COUPLING NUT RETENTION FORCE	>100 lbs
DURABILITY	>500 cycles

ENVIRONMENTAL PARAMETER	
TEMPERATURE RANGE	-65 °C~+165 °C
CORROSION	MIL- STD 202, Meth. 101,Cond. B
VIBRATION	MIL- STD 202, Meth. 204,Cond. B
SHOCK	MIL- STD 202, Meth. 213,Cond. I

* CUSTOMER OUTLINE DRAWING

UNLESS OTHERWISE SPECIFIED:
 1) EDGES : C0.15 MAX ;
 2) REMOVE ALL BURRS ;
 3) SURFACE ROUGHNESS : Ra1.6 ;
 4) UNITS : mm ;
 5) DIMENSIONS TOLERANCES
 DECIMALS : .x ±0.3 .xx ±0.2 .xxx±0.1;
 ANGLES : ± 5°.

THIRD ANGLE PROJECTION	
APPROVED :	CUSTOMER P/N :
CHECKED :	SCALE :
DRAWING :	DATE :
JING	2020-07-06
PAGE : 1/1	

TITLE : BNC MALE R/A CRIMP FOR RG58 CABLE 50Ω
 DRAWING NO. : 5BNM11R-A41-011
 COMPANY WEBSITE : www.slkcorp.com

CUSTOMER OUTLINE DRAWING