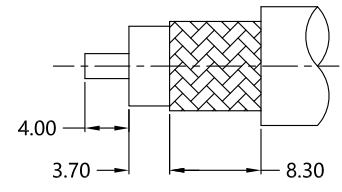


REV.	DESCRIPTION	ECN NO.	NAME	DATE
0	FIRST EDITION	N/A	YWD	2017-11-03
01	UPDATED THE DRAWING	N/A	YWD	2018-04-28
2	UPDATE FRAME	N/A	PY	2020-08-31

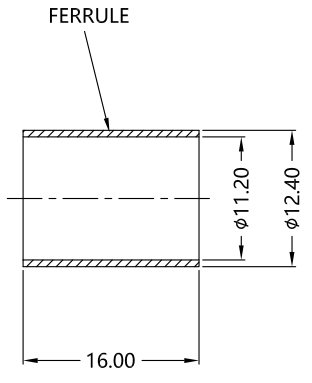
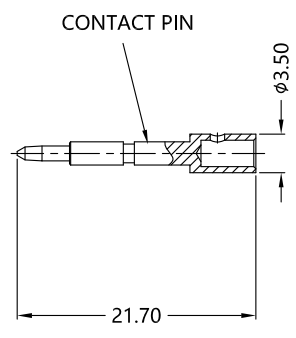
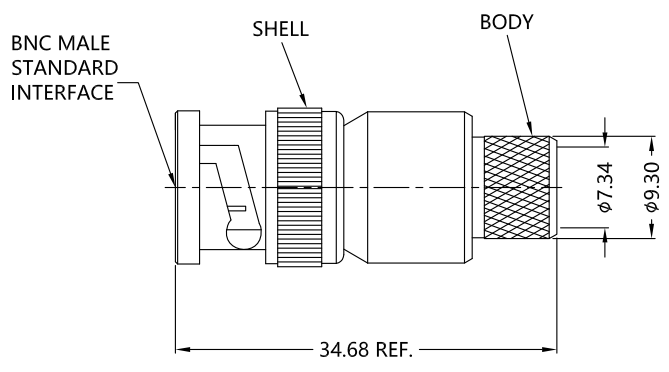


ALL PARTS MUST MEET TO RoHS REQUIREMENTS

REMARKS:  
 1. CONTACT PIN TO SOLDER  
 2. CRIMPED FERRULE HEX. CRIMP SIZE .429"



RECOMMENDED CABLE STRIPPING DIM'S



MATERIALS AND PLATING		UNIT: MICRO-INCHES
PART NAME	MATERIALS	PLATING
BODY /SHELL	BRASS C3602	ALBALOY PL.80u"/COPPER
INSULATOR	PTFE ASTM-D-1710	NATURAL
CONTACT PIN	BRASS C3604	GOLD 15 u"/NICKEL/COPPER
FERRULE	BRASS	ALBALOY PL.80u"/COPPER

ELECTRICAL CHARACTERISTICS	
IMPEDANCE	50 Ω
VOLTAGE RATING	335 V(rms)
FREQUENCY RANGE	0 ~ 4 GHz
DIELECTRIC WITHSTANDING VOLTAGE	>1000 V
CONTACT RESISTANCE	CENTER CONTACT
	OUTER CONTACT
INSULATION RESISTANCE	>5000 MΩ
INSERTION LOSS	N/A
VSWR	< 1.3
3RD INTERMODULATION	N/A

MECHANICAL CHARACTERISTICS	
FORCE TO ENGAGE AND DISENGAGE	N/A
CENTER CONTACT RETENTION FORCE	N/A
RECOMMENDED COUPLING TORQUE	N/A
COUPLING NUT RETENTION FORCE	> 100 lbs
DURABILITY	>500cycles

ENVIRONMENTAL PARAMETER	
TEMPERATURE RANGE	-40 °C~+165 °C

\* CUSTOMER OUTLINE DRAWING

UNLESS OTHERWISE SPECIFIED:  
 1) EDGES : C0.15 MAX ;  
 2) REMOVE ALL BURRS ;  
 3) SURFACE ROUGHNESS : Ra1.6 ;  
 4) UNITS : mm ;  
 5) DIMENSIONS TOLERANCES  
 DECIMALS : .x ±0.3 .xx ±0.2 .xxx±0.1;  
 ANGLES : ± 5°.

THIRD ANGLE PROJECTION	
APPROVED :	CUSTOMER P/N :
CHECKED :	SCALE :
DRAWING :	DATE :
PAGE : 1/1	

TITLE : BNC S/T MALE FOR RG214 CABLE,50Ω  
 DRAWING NO. : 5BNM11S-A06  
 COMPANY WEBSITE : www.slkcorp.com

CUSTOMER OUTLINE DRAWING