
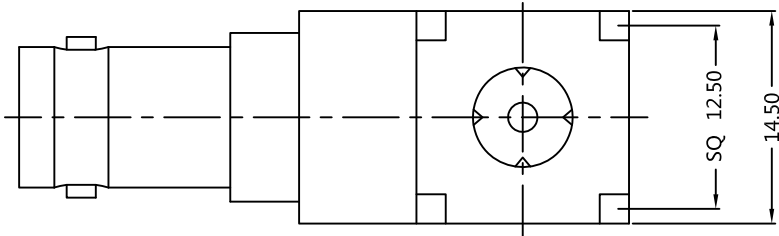
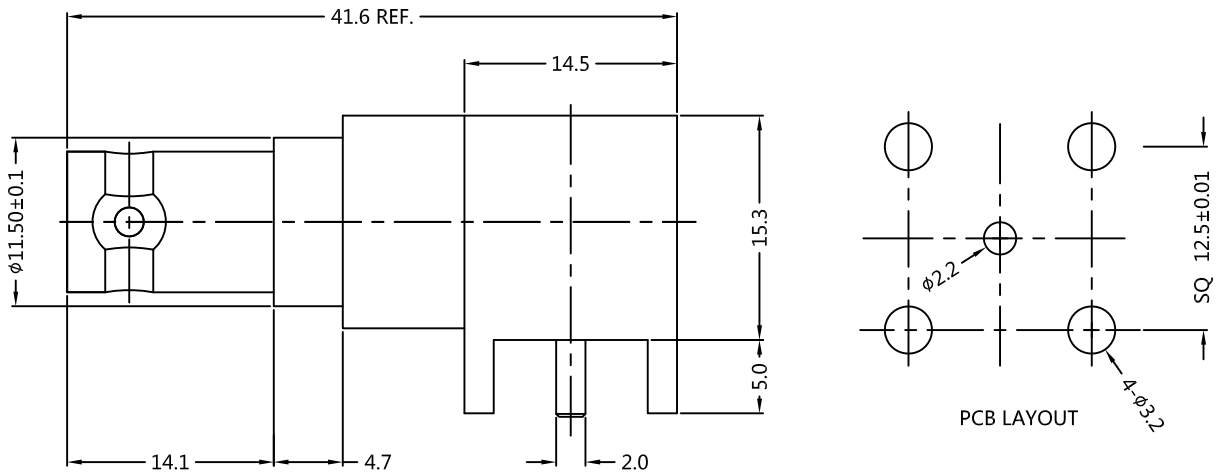


|      |             |         |      |            |   |
|------|-------------|---------|------|------------|---|
| REV. | DESCRIPTION | ECN NO. | NAME | DATE       |  ALL PARTS MUST MEET TO RoHS REQUIREMENTS |
| 1    | NEW FRAME   | N/A     | JING | 2020-06-29 |   |



ALL PARTS SATISFIED ROHS REQUIREMENTS

| MATERIALS AND PLATING |                  | UNIT: MICRO-INCHES     |
|-----------------------|------------------|------------------------|
| PART NAME             | MATERIALS        | PLATING                |
| BODY                  | BRASS            | NICKEL 100u"/COPPER    |
| INSULATOR             | PTFE ASTM-D-1710 | N/A                    |
| CONTACT PIN           | PHOSPHOR BRONZE  | GOLD 3u"/NICKEL/COPPER |

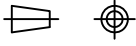
| ELECTRICAL CHARACTERISTICS      |                |         |
|---------------------------------|----------------|---------|
| IMPEDANCE                       | 50 Ω           |         |
| VOLTAGE RATING                  | 500 V(rms)     |         |
| FREQUENCY RANGE                 | 0 ~ 3 GHz      |         |
| DIELECTRIC WITHSTANDING VOLTAGE | >750 V         |         |
| CONTACT RESISTANCE              | CENTER CONTACT | <3.0 mΩ |
|                                 | OUTER CONTACT  | <2.0 mΩ |
| INSULATION RESISTANCE           | >5000 MΩ       |         |
| INSERTION LOSS                  | <N/A           |         |
| RF-LEAKAGE                      | N/A            |         |
| VSWR                            | N/A            |         |
| 3RD INTERMODULATION             | N/A            |         |

| MECHANICAL CHARACTERISTICS     |             |
|--------------------------------|-------------|
| FORCE TO ENGAGE AND DISENGAGE  | N/A         |
| CENTER CONTACT RETENTION FORCE | >6 lbs      |
| RECOMMENDED COUPLING TORQUE    | N/A         |
| COUPLING NUT RETENTION FORCE   | N/A         |
| DURABILITY                     | >500 cycles |

| ENVIRONMENTAL PARAMETER |                                 |
|-------------------------|---------------------------------|
| TEMPERATURE RANGE       | -55 °C~+125 °C                  |
| CORROSION               | MIL-STD-202, Meth. 101,Cond. B  |
| VIBRATION               | MIL- STD 202, Meth. 204,Cond. B |
| SHOCK                   | MIL- STD 202, Meth. 213,Cond. G |

\* CUSTOMER OUTLINE DRAWING

UNLESS OTHERWISE SPECIFIED:  
 1) EDGES : C0.15 MAX ;  
 2) REMOVE ALL BURRS ;  
 3) SURFACE ROUGHNESS : Ra1.6 ;  
 4) UNITS : mm ;  
 5) DIMENSIONS TOLERANCES  
 DECIMALS : .x ±0.3 .xx ±0.2 .xxx±0.1;  
 ANGLES : ± 5°.

|                        |                |  |
|------------------------|----------------|--|
| THIRD ANGLE PROJECTION |                |  |
| APPROVED :             | CUSTOMER P/N : |  |
| CHECKED :              | SCALE :        | 2 : 1  |
| DRAWING :              | DATE :         | 2020-06-29   |
| JING                   | PAGE :         | 1/1  |



TITLE : BNC FEMALE R/A FOR PCB THROUGH HOLE 50 OHM  
 DRAWING NO. : 5BNF25R-P00-004  
 COMPANY WEBSITE : www.slkcorp.com

CUSTOMER OUTLINE DRAWING