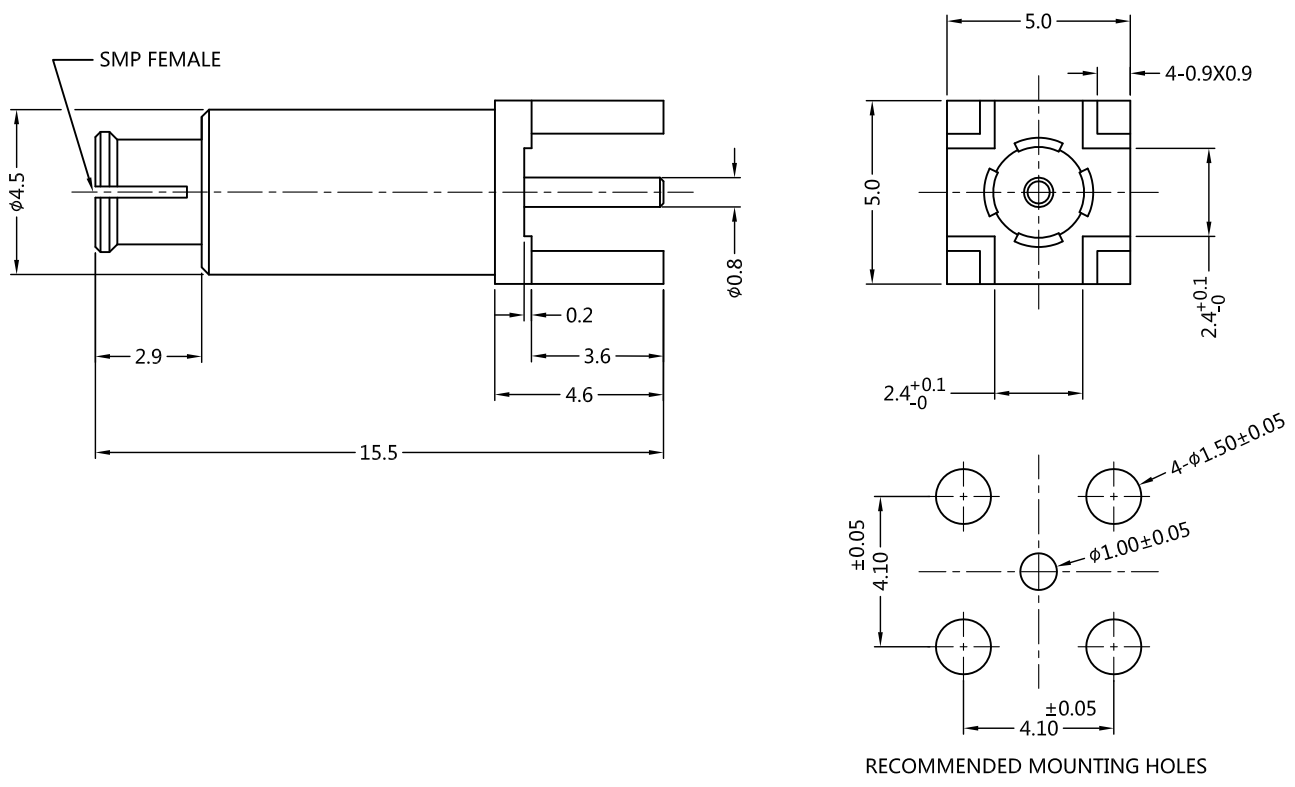


REV	DESCRIPTION	ECN NO	NAME	DATE
0	FIRST EDITION	N/A	WYJ	2016-06-06
1	NEW FRAME	N/A	LW	2020-07-14



ALL PARTS MUST MEET TO RoHS REQUIREMENTS



MATERIALS AND PLATING		UNIT: MICRO-INCHES
BODY	BERYLLIUM COPPER	GOLD 10 u"/NICKEL/COPPER
CONTACT PIN	BERYLLIUM COPPER	GOLD 30 u"/NICKEL/COPPER
INSULATOR	PTFE ASTM-D-1710	N/A

ELECTRICAL CHARACTERISTICS	
IMPEDANCE	50 Ω
VOLTAGE RATING	175 V(rms)
FREQUENCY RANGE	0~18 GHz
DIELECTRIC WITHSTANDING VOLTAGE	>500 V
CONTACT RESISTANCE	CENTER CONTACT <6.0 m Ω
	OUTER CONTACT <3.0 m Ω
INSULATION RESISTANCE	>5000 M Ω
INSERTION LOSS	<0.1V dB
VSWR	<1.30
3RD INTERMODULATION	N/A

MECHANICAL CHARACTERISTICS		
CENTER CONTACT RETENTION FORCE	N/A	
FORCE TO ENGAGE AND DISENGAGE	FULL DETENT	<15 lbs (ENGAGE FORCE)
		>5 lbs (DISENGAGE FORCE)
	LIMITED DETENT	<10 lbs (ENGAGE FORCE)
		>2 lbs (DISENGAGE FORCE)
	SMOOTH BORE	<2 lbs (ENGAGE FORCE)
		>0.5 lbs (DISENGAGE FORCE)
DURABILITY	>100 cycles (FULL DETENT); >500 cycles (SMOOTH BORE)	

ENVIRONMENTAL CHARACTERISTICS	
TEMPERATURE RANGE	-40 $^{\circ}$ C ~ +125 $^{\circ}$ C
THERMAL SHOCK	MIL- STD 202, Meth. 107, Cond. B
VIBRATION	MIL- STD 202, Meth. 204, Cond. D
SHOCK	MIL- STD 202, Meth. 213, Cond. I

CUSTOMER OUTLINE DRAWING

* CUSTOMER OUTLINE DRAWING

UNLESS OTHERWISE SPECIFIED:
 1) C0.15 MAX;
 2) REMOVE ALL BURRS;
 3) SURFACE ROUGHNESS : Ra1.6;
 4) UNITS:mm;
 5) DIMENSIONS TOLERANCES
 DECIMALS .x \pm 0.3 .xx \pm 0.2 .xxx \pm 0.1
 ANGLES \pm 5 $^{\circ}$

THIRD ANGLE PROJECTION	
APPROVED:	CUSTOMER P/N:
CHECKED:	SCALE:
DRAWING:	DATE: 2020-07-15
COMPANY WEBSITE: www.slkcorp.com	

TITLE: SMP FEMALE S/T FOR PCB THROUGH HOLE, 50 Ω

DRAWING NO: 5SPF25S-P41-004