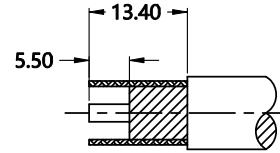


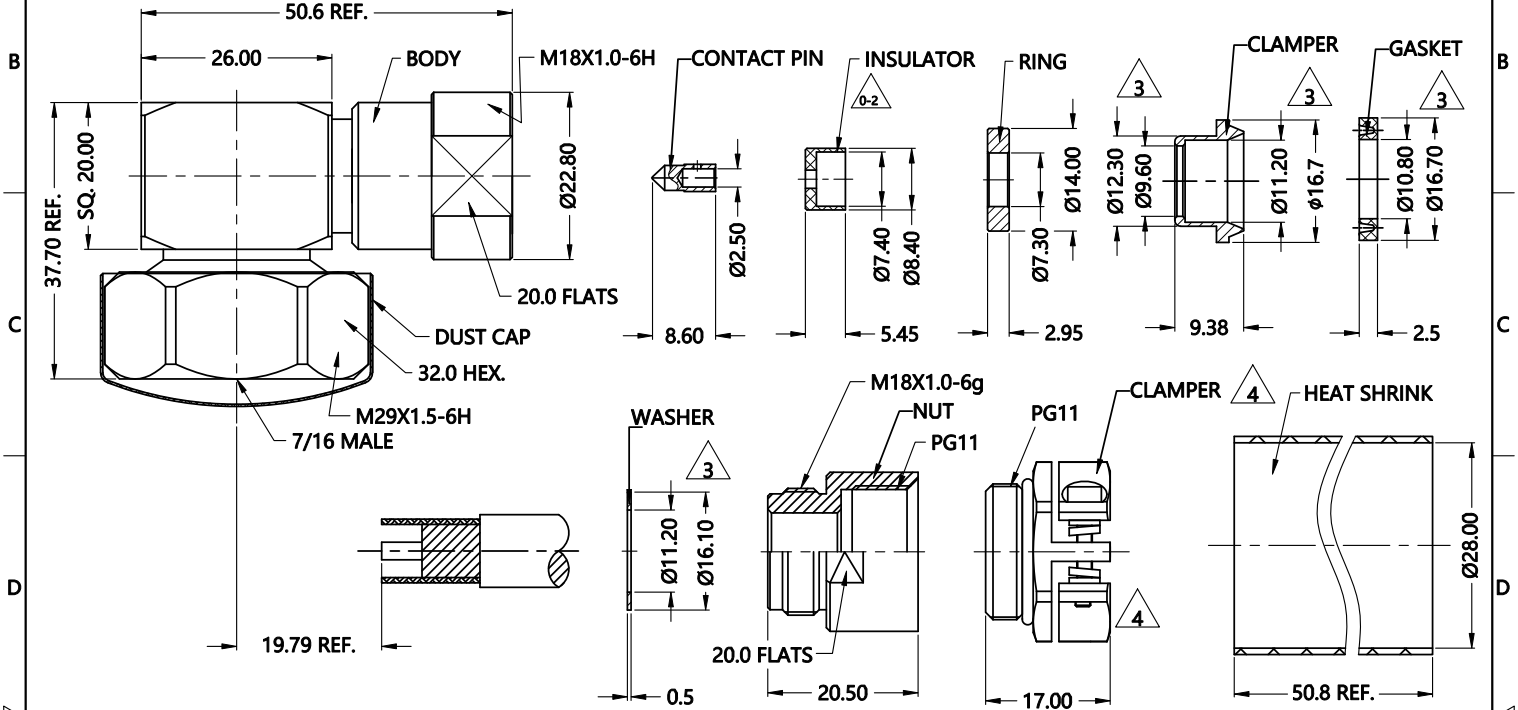
REV.	DESCRIPTION	ECN NO.	NAME	DATE
0-1	20.0 was 19.0, Change sleeve size	N/A	Arming	2011-11-21
0-2	change DWV to 5KV, modify insulator	N/A	Flame	2015-02-03
3	MODIFY DIM.	N/A	ZLX	2018-07-01
4	ADD THE HEAT SHRINK	N/A	HRWEI	2021-01-05



ALL PARTS MUST MEET TO RoHS REQUIREMENTS



RECOMMENDED STRIPPING DIM'S



MATERIALS AND PLATING		UNIT: MICRO-INCHES
PART NAME	MATERIALS	PLATING
BODY/SHELL	BRASS C3604	ALBALOY 80 u"/COPPER
INSULATOR	PTFE ASTM-D-1710	N/A
CONTACT PIN	BRASS C3604	SILVER 200 u"/COPPER
	Be-Cu C17300	SILVER 200 u"/COPPER
GASKET	SILICONE	RED
NUT	BRASS C3604	NICKEL 200 u"/COPPER
CLAMPER	BRASS C3604	NICKEL 200 u"/COPPER

ELECTRICAL CHARACTERISTICS	
IMPEDANCE	50 Ω
VOLTAGE RATING	N/A
FREQUENCY RANGE	0 ~ 1 GHz
DIELECTRIC WITHSTANDING VOLTAGE	>5000V
CONTACT RESISTANCE	CENTER CONTACT <1.5 mΩ
	OUTER CONTACT <0.4 mΩ
INSULATION RESISTANCE	>10000 MΩ
INSERTION LOSS	N/A
VSWR	<1.25
3RD INTERMODULATION	N/A

MECHANICAL CHARACTERISTICS	
FORCE TO ENGAGE AND DISENGAGE	N/A
CENTER CONTACT RETENTION FORCE	>45 lbs
RECOMMENDED COUPLING TORQUE	221-260 in.lbs
COUPLING NUT RETENTION FORCE	>225 lbs
DURABILITY	>500cycles

ENVIRONMENTAL PARAMETER	
TEMPERATURE RANGE	-40 °C ~ +125 °C
THERMAL SHOCK	US MIL- STD 202, Meth. 107, Cond. B
VIBRATION	US MIL- STD 202, Meth. 204, Cond. A
SHOCK	US MIL- STD 202, Meth. 213, Cond. A

\* CUSTOMER OUTLINE DRAWING

UNLESS OTHERWISE SPECIFIED:

- EDGES : C0.15 MAX ;
- REMOVE ALL BURRS ;
- SURFACE ROUGHNESS : Ra1.6 ;
- UNITS : mm ;
- DIMENSIONS TOLERANCES  
DECIMALS : .x ±0.3 .xx ±0.2 .xxx ±0.1;  
ANGLES : ± 5°.

THIRD ANGLE PROJECTION



APPROVED :

CUSTOMER P/N :

CHECKED :

SCALE :

1 : 1

DRAWING :

DATE : 2021-01-05

PAGE : 1/1



TITLE : 7/16 MALE R/A CLAMP FOR RG393/RG213/RG214 CABLE,50Ω

DRAWING NO. :

5A7M14R-A253

COMPANY WEBSITE : www.slkcorp.com

CUSTOMER OUTLINE DRAWING