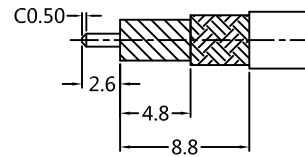


| REV. | DESCRIPTION | ECN NO. | NAME | DATE |
|------|-------------|---------|------|----------|
| 1 | NEW FRAME | N/A | LDH | 2020-9-2 |

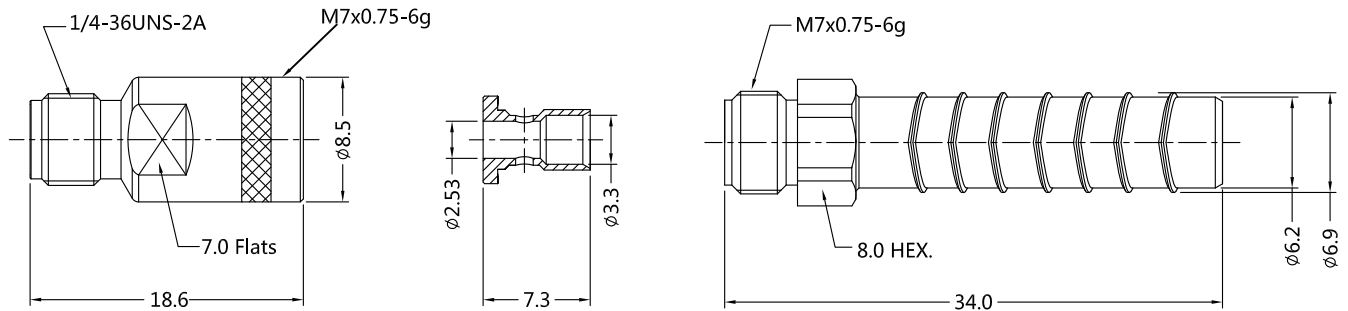


ALL PARTS MUST MEET TO RoHS REQUIREMENTS

REMARK:
1.ADDS SIZE: 10.83 mm
2.CONTACT PIN & FERRULE TO SOLDER



RECOMMENDED CABLE STRIPPING DIM'S



| MATERIALS AND PLATING | | UNIT: MICRO-INCHES |
|-----------------------|-----------------|---------------------|
| PART NAME | MATERIALS | PLATING |
| BODY/SHELL | STAINLESS STEEL | PASSIVATION |
| CONTACT PIN | BE-CU C17300 | GOLD 50u"MIN/COPPER |
| INSULATOR | PEL | AMBER |

| ELECTRICAL CHARACTERISTICS | |
|---------------------------------|------------------------|
| IMPEDANCE | 50 Ω |
| VOLTAGE RATING | 335 V(rms) |
| FREQUENCY RANGE | 0 ~ 26.5 GHz |
| DIELECTRIC WITHSTANDING VOLTAGE | 750 V |
| CONTACT RESISTANCE | CENTER CONTACT |
| | OUTER CONTACT |
| INSULATION RESISTANCE | > 5000 MΩ |
| INSERTION LOSS | ACCORDING TO THE CABLE |
| VSWR | < 1.20@0-26.5GHz |
| 3RD INTERMODULATION | N/A |

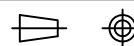
| MECHANICAL CHARACTERISTICS | |
|--------------------------------|--------------|
| FORCE TO ENGAGE AND DISENGAGE | N/A |
| CENTER CONTACT RETENTION FORCE | > 10 lbs |
| COUPLING PROOF TORQUE | > 15 lbs |
| COUPLING NUT RETENTION FORCE | > 60 lbs |
| DURABILITY | > 500 cycles |

| ENVIRONMENTAL PARAMETER | |
|-------------------------|---------------------------------|
| TEMPERATURE RANGE | -55 °C ~ +125 °C |
| RELATIVE HUMIDITY | MIL-STD-202, METHOD 106 |
| VIBRATION | MIL-STD-202, METHOD 204, COND D |
| SHOCK | MIL-STD-202, METHOD 213, COND I |
| CORROSION | MIL-STD-202, METHOD 101, COND B |

* CUSTOMER OUTLINE DRAWING

UNLESS OTHERWISE SPECIFIED:
1) EDGES : C0.15 MAX ;
2) REMOVE ALL BURRS ;
3) SURFACE ROUGHNESS : Ra1.6 ;
4) UNITS : mm ;
5) DIMENSIONS TOLERANCES
DECIMALS : .x ±0.3 .xx ±0.2 .xxx±0.1;
ANGLES : ± 5°.

THIRD ANGLE PROJECTION



APPROVED :

CUSTOMER P/N :

CHECKED :

SCALE :

DRAWING :

LDH

DATE : 2020-9-2

PAGE : 1/1



TITLE : 3.5mm FEMALE STR FOR SLB-330-P TEST CABLE,50Ω

DRAWING NO. : 5P3F15S-A436

COMPANY WEBSITE : www.slkcorp.com

CUSTOMER OUTLINE DRAWING