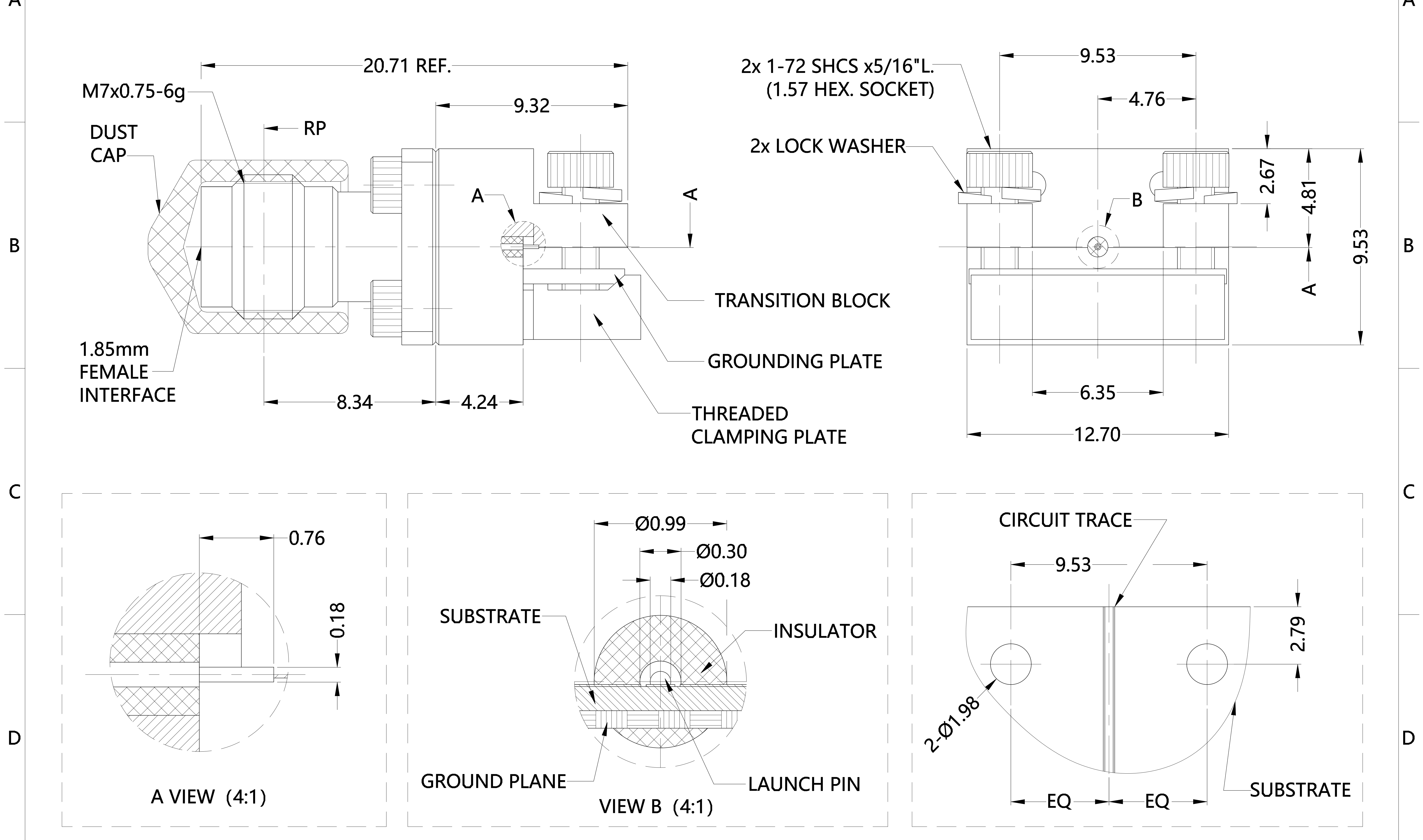


| REV. | DESCRIPTION   | ECN NO. | NAME  | DATE       |
|------|---------------|---------|-------|------------|
| 0    | FIRST EDITION | N/A     | SYH   | 2019-11-20 |
| 1    | NEW FRAME     | N/A     | JASON | 2021-12-30 |



ALL PARTS MUST MEET TO RoHS REQUIREMENTS



| MATERIALS AND PLATING |                       | UNIT: MICRO-INCHES   |
|-----------------------|-----------------------|----------------------|
| PART NAME             | MATERIALS             | PLATING              |
| BODY                  | STAINLESS STEEL 303Cu | PASSIVATION          |
| CONTACT PIN           | Be-Cu C17300          | GOLD 50 u"/COPPER    |
| INSULATOR             | PEI & PTFE            | NATURAL              |
| TRANSITION BLOCK      | BRASS C3604           | NICKEL 100 u"/COPPER |
| DUST CAP              | PVC                   | BLACK                |

| ELECTRICAL CHARACTERISTICS      |                        |
|---------------------------------|------------------------|
| IMPEDANCE                       | 50 Ω                   |
| VOLTAGE RATING                  | 335 V(rms)             |
| FREQUENCY RANGE                 | DC ~ 67 GHz            |
| DIELECTRIC WITHSTANDING VOLTAGE | >500 V                 |
| CONTACT RESISTANCE              | CENTER CONTACT <2.2 mΩ |
|                                 | OUTER CONTACT <1.2 mΩ  |
| INSULATION RESISTANCE           | >500 MΩ                |
| INSERTION LOSS                  | According to the PCB   |
| VSWR                            | <TBD SQRT(Test Value)  |

| MECHANICAL CHARACTERISTICS     |              |
|--------------------------------|--------------|
| FORCE TO ENGAGE AND DISENGAGE  | N/A          |
| CENTER CONTACT RETENTION FORCE | > 6 lbs      |
| RECOMMENDED COUPLING TORQUE    | N/A          |
| COUPLING NUT RETENTION FORCE   | N/A          |
| DURABILITY                     | > 500 cycles |

| ENVIRONMENTAL PARAMETER |                 |
|-------------------------|-----------------|
| TEMPERATURE RANGE       | -40 °C ~ +85 °C |

**\* CUSTOMER OUTLINE DRAWING**

UNLESS OTHERWISE SPECIFIED:  
 1) EDGES : C0.15 MAX ;  
 2) REMOVE ALL BURRS ;  
 3) SURFACE ROUGHNESS : Ra1.6 ;  
 4) UNITS : mm ;  
 5) DIMENSIONS TOLERANCES  
 DECIMALS : .x ±0.3 .xx ±0.2 .xxx±0.1 ;  
 ANGLES : ± 5°.

|                        |                              |
|------------------------|------------------------------|
| THIRD ANGLE PROJECTION |                              |
| APPROVED :             | CUSTOMER P/N :<br>1892-03A-6 |
| CHECKED :              | SCALE :<br>1:1               |
| DRAWING :<br>JASON     | DATE :<br>2021-12-30         |
|                        | PAGE :<br>1/1                |

TITLE : 1.85mm FEMALE S/T CONNECTOR WITH END LAUNCH, 50Ω  
 DRAWING NO. : T-5P1F80S-H41-002  
 COMPANY WEBSITE : www.slkcorp.com

CUSTOMER OUTLINE DRAWING