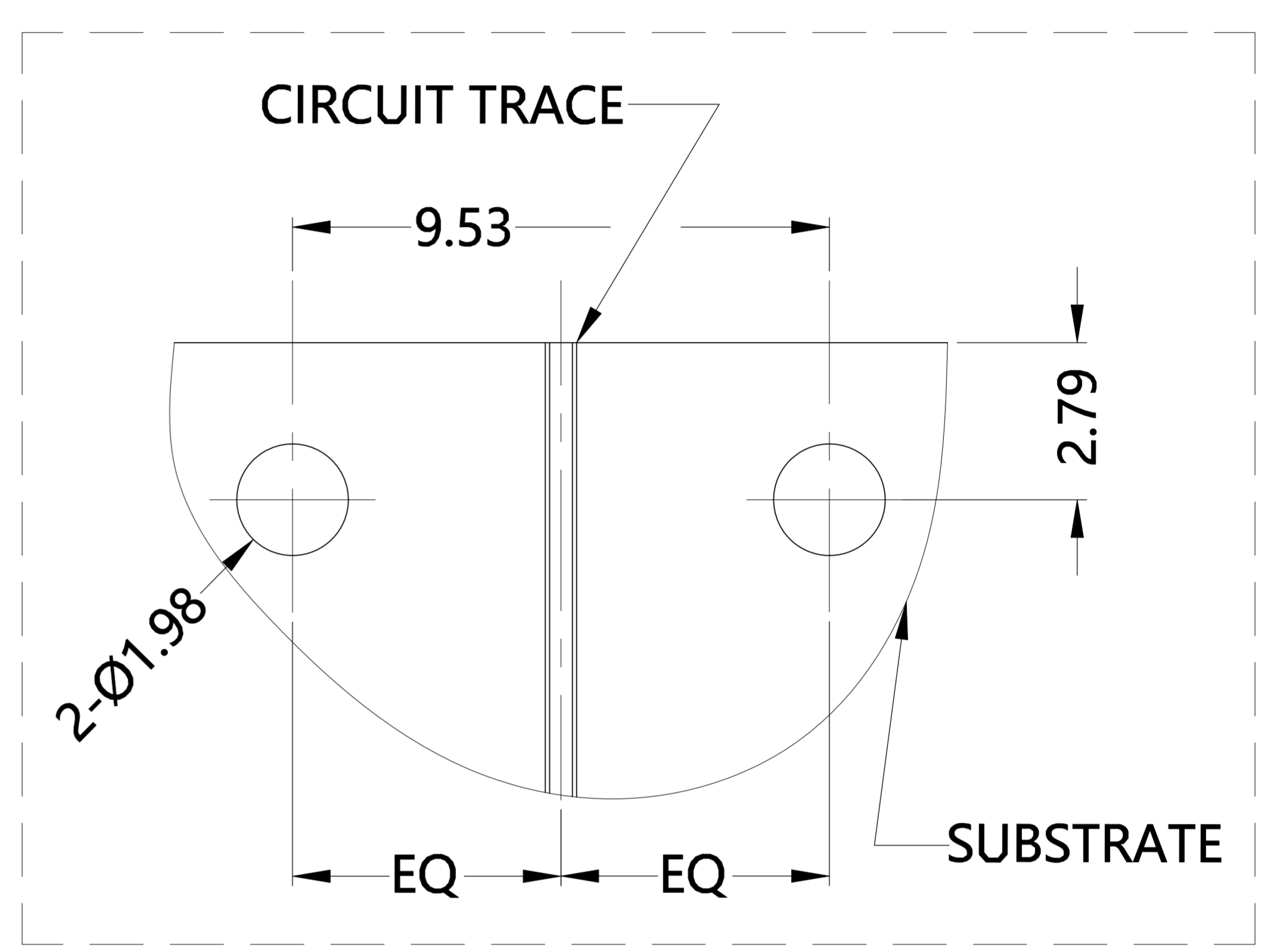
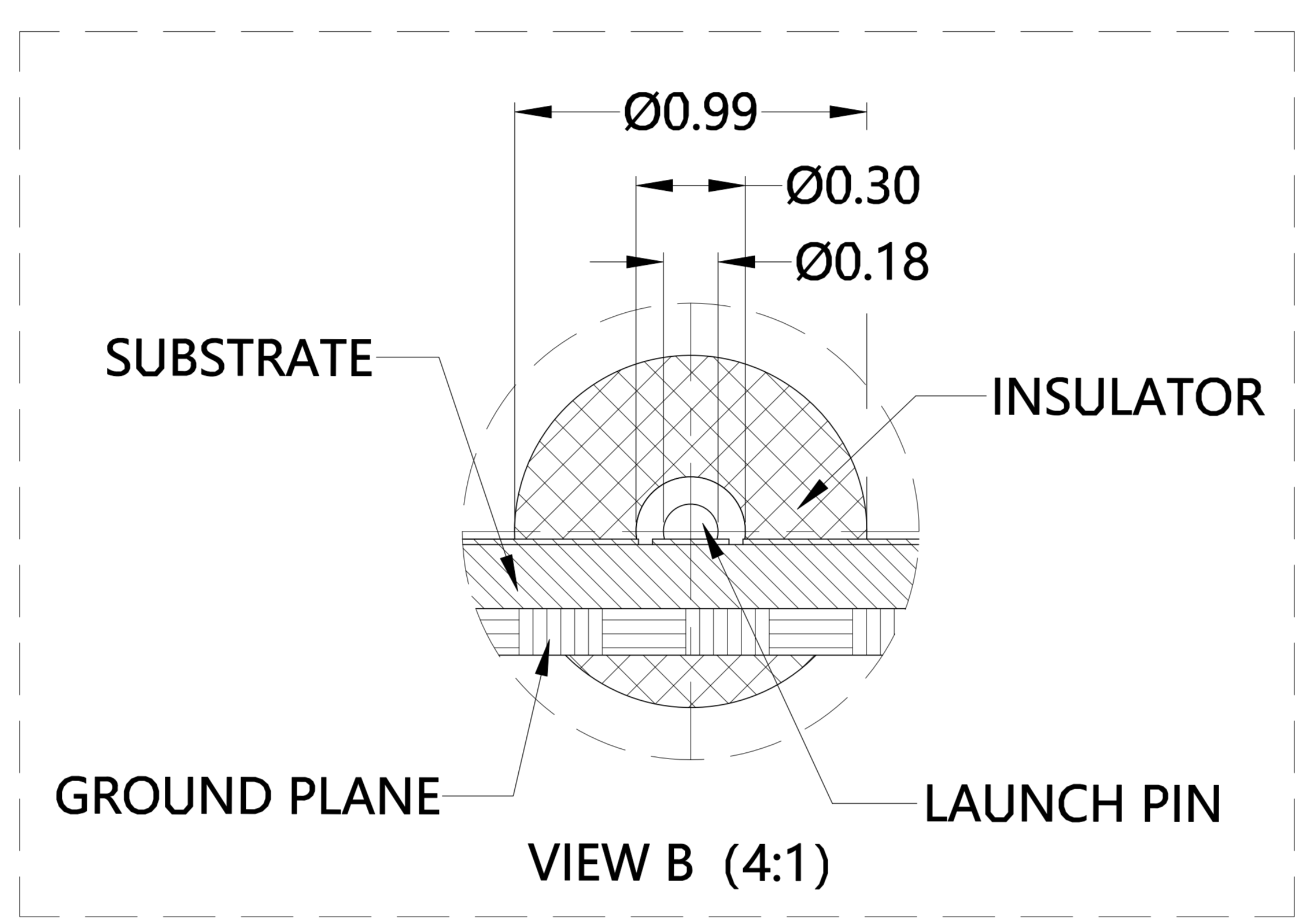
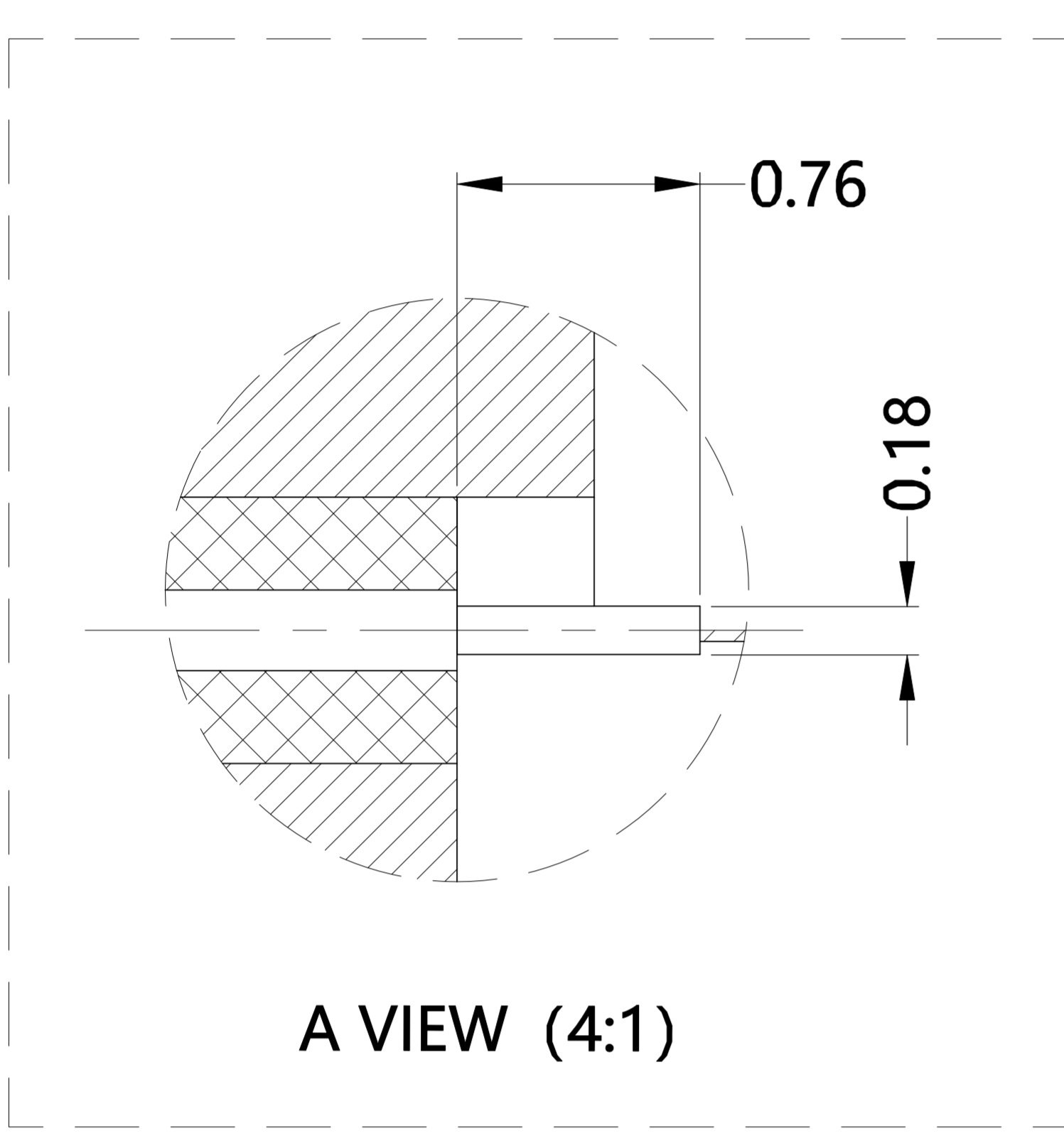
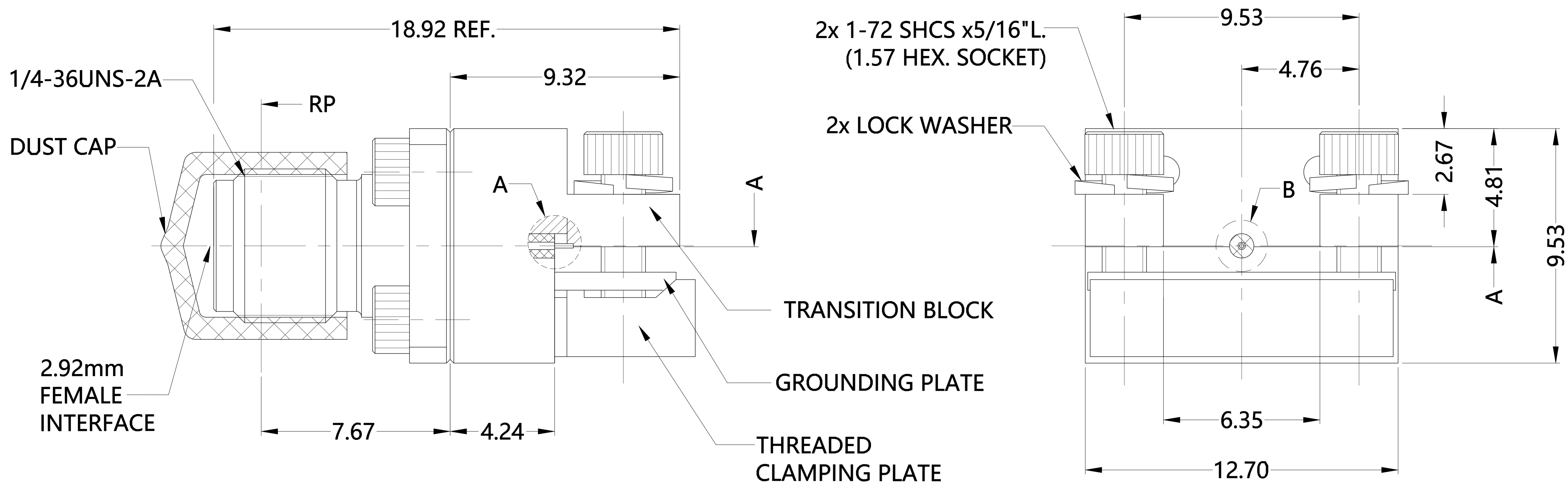


REV.	DESCRIPTION	ECN NO.	NAME	DATE
0	FIRST EDITION	N/A	SYH	2019-11-20
1	NEW FRAME	N/A	JASON	2021-12-30



ALL PARTS MUST MEET TO RoHS REQUIREMENTS



MATERIALS AND PLATING		UNIT: MICRO-INCHES
PART NAME	MATERIALS	PLATING
BODY	STAINLESS STEEL 303Cu	PASSIVATION
CONTACT PIN	Be-Cu C17300	GOLD 50 μ "/COPPER
INSULATOR	PEI & PTFE	NATURAL
TRANSITION BLOCK	BRASS C3604	NICKEL 100 μ "/COPPER
DUST CAP	PVC	BLACK

ELECTRICAL CHARACTERISTICS	
IMPEDANCE	50 Ω
VOLTAGE RATING	335 V(rms)
FREQUENCY RANGE	DC ~ 40 GHz
DIELECTRIC WITHSTANDING VOLTAGE	>500 V
CONTACT RESISTANCE	CENTER CONTACT <1.5 m Ω
	OUTER CONTACT <1.2 m Ω
INSULATION RESISTANCE	>1000 M Ω
INSERTION LOSS	According to the PCB
VSWR	<1.30 SQRT(Test Value)

MECHANICAL CHARACTERISTICS	
FORCE TO ENGAGE AND DISENGAGE	N/A
CENTER CONTACT RETENTION FORCE	> 6 lbs
RECOMMENDED COUPLING TORQUE	N/A
COUPLING NUT RETENTION FORCE	N/A
DURABILITY	> 500 cycles

ENVIRONMENTAL PARAMETER	
TEMPERATURE RANGE	-40 $^{\circ}$ C ~ +85 $^{\circ}$ C

* CUSTOMER OUTLINE DRAWING

UNLESS OTHERWISE SPECIFIED:
 1) EDGES : C0.15 MAX ;
 2) REMOVE ALL BURRS ;
 3) SURFACE ROUGHNESS : Ra1.6 ;
 4) UNITS : mm ;
 5) DIMENSIONS TOLERANCES
 DECIMALS : .x \pm 0.3 .xx \pm 0.2 .xxx \pm 0.1 ;
 ANGLES : \pm 5 $^{\circ}$.

THIRD ANGLE PROJECTION	
APPROVED :	CUSTOMER P/N : 1092-04A-6
CHECKED :	SCALE : 1:1
DRAWING : JASON	DATE : 2021-12-30
	PAGE : 1/1

TITLE : 2.92mm FEMALE S/T CONNECTOR WITH END LAUNCH, 50 Ω

DRAWING NO. : T-5P9F80S-H41-002

COMPANY WEBSITE : www.slkcorp.com

CUSTOMER OUTLINE DRAWING