
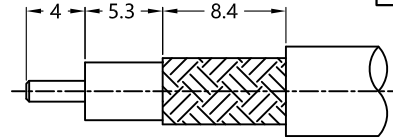
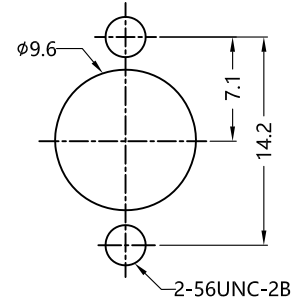
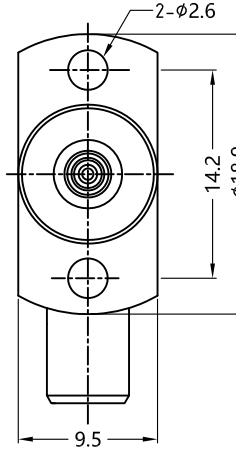
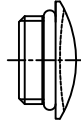
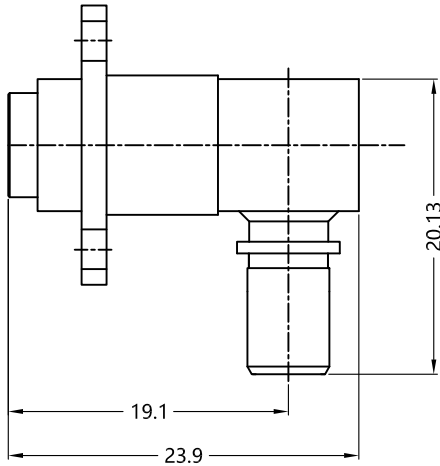


REV.	DESCRIPTION	ECN NO.	NAME	DATE	 ALL PARTS MUST MEET TO RoHS REQUIREMENTS
0	FIRST EDITION	N/A	Kevin.Li	2020-09-15	

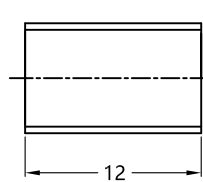
- 1.FERRULE TO CRIMPED THE HEX. SIZE .256"
2.CONTACT PIN TO SOLDER



RECOMMENDED CABLE STRIPPING DIM'S



RECOMMENDED MOUNTING HOLES DIM'S



MATERIALS AND PLATING		UNIT: MICRO-INCHES
PART NAME	MATERIALS	PLATING
BODY/HOUSE	BRASS	NICKEL 200 u"/COPPER
INSULATOR	PTFE ASTM-D-1710	N/A
CONTACT PIN	BERYLLIUM COPPER	GOLD 10 u"/COPPER
FERRULE	BRASS	NICKEL 200 u"/COPPER
COVER	BRASS	NICKEL 200 u"/COPPER
OUT CONTACT	BERYLLIUM COPPER	GOLD 10 u"/COPPER

ELECTRICAL CHARACTERISTICS		
IMPEDANCE	50 Ω	
VOLTAGE RATING	335V(rms)	
FREQUENCY RANGE	0 ~ 6 GHz	
DIELECTRIC WITHSTANDING VOLTAGE	>750 V	
CONTACT RESISTANCE	CENTER CONTACT	<3.0 mΩ
	OUTER CONTACT	<2.0 mΩ
INSULATION RESISTANCE	>5000 MΩ	
INSERTION LOSS	N/A	
VSWR	≤1.15	
3RD INTERMODULATION	N/A	

MECHANICAL CHARACTERISTICS	
FORCE TO ENGAGE AND DISENGAGE	N/A
CENTER CONTACT RETENTION FORCE	> 6 lbs
RECOMMENDED COUPLING TORQUE	N/A
COUPLING NUT RETENTION FORCE	N/A
DURABILITY	> 1000cycles

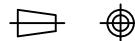
ENVIRONMENTAL PARAMETER	
TEMPERATURE RANGE	-40°C- +125°C

* CUSTOMER OUTLINE DRAWING

UNLESS OTHERWISE SPECIFIED:

- EDGES : C0.15 MAX ;
- REMOVE ALL BURRS ;
- SURFACE ROUGHNESS : Ra1.6 ;
- UNITS : mm ;
- DIMENSIONS TOLERANCES
DECIMALS : .x ±0.3 .xx ±0.2 .xxx±0.1;
ANGLES : ± 5°.

THIRD ANGLE PROJECTION



APPROVED :

CUSTOMER P/N :

CHECKED :

SCALE :

DRAWING :

DATE : 2020-09-15

PAGE : 1/1



TITLE : BMA FEMALE R/A CRIMP FOR LMR240,AMR-600 CABLE,50Ω

DRAWING NO. :

5BMF11R-A46-002

COMPANY WEBSITE : www.slkcorp.com

CUSTOMER OUTLINE DRAWING