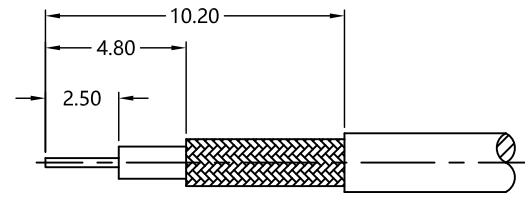


1	2	3	4	5	6
REV	DESCRIPTION	ECN NO	NAME	DATE	
0	FIRST EDITION	N/A	Liu	2020-10-08	



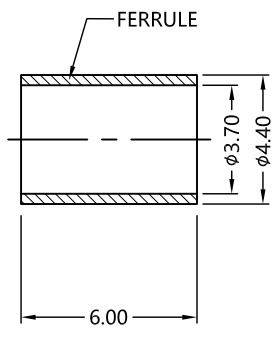
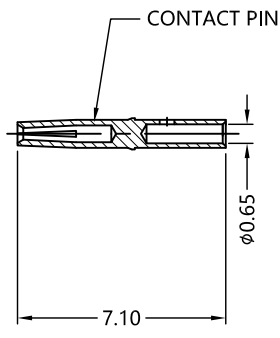
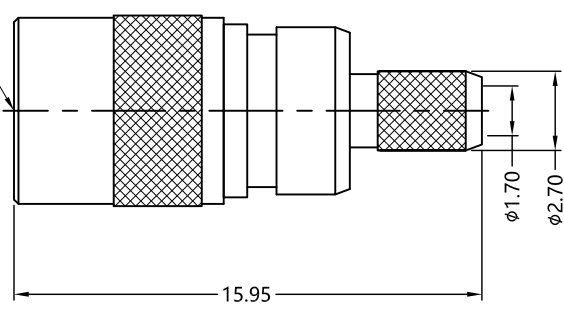
ALL PARTS MUST MEET TO RoHS REQUIREMENTS

REMARKS:
 1.CONTACT PIN TO SOLDER
 2.CRIMPED FERRULE HEX. CRIMP SIZE .150"
 3.ADD SIZE 7.60mm



RECOMMENDED CABLE STRIPPING DIM'S

SMB MALE 75Ω



MATERIALS AND PLATING		UNIT: MICRO-INCHES
BODY	BRASS C3604	GOLD 3 u"/NICKEL/COPPER
CONTACT PIN	TIN BRONZE QSn4-3	GOLD 10 u"/NICKEL/COPPER
INSULATOR	PTFE ASTM-D-1710	N/A
SHELL	BRASS C3602	NICKEL100 u" /COPPER
FERRULE	BRASS	NICKEL100 u" /COPPER

ELECTRICAL CHARACTERISTICS		
IMPEDANCE	75 Ω	
VOLTAGE RATING	335 V(rms)	
FREQUENCY RANGE	0~1.218 GHz	
DIELECTRIC WITHSTANDING VOLTAGE	>1000 V	
CONTACT RESISTANCE	CENTER CONTACT	<6.0 mΩ
	OUTER CONTACT	<1.0 mΩ
INSULATION RESISTANCE	>1000 MΩ	
INSERTION LOSS	<0.1X√f(GHz)	
VSWR	<1.3	
3RD INTERMODULATION	N/A	

MECHANICAL CHARACTERISTICS	
ENGAGE FORCE	<14 lbs
DISENGAGE FORCE	2~14 lbs
CENTER CONTACT RETENTION FORCE	N/A
DURABILITY	>500 cycles

ENVIRONMENTAL CHARACTERISTICS	
TEMPERATURE RANGE	-40 °C~+125 °C

* CUSTOMER OUTLINE DRAWING

UNLESS OTHERWISE SPECIFIED:
 1) C0.15 MAX;
 2) REMOVE ALL BURRS;
 3) SURFACE ROUGHNESS : Ra1.6;
 4) UNITS:mm;
 5) DIMENSIONS TOLERANCES
 DECIMALS .x ±0.3 .xx ±0.2 .xxx±0.1
 ANGLES ±5°

THIRD ANGLE PROJECTION		
APPROVED:	CUSTOMER P/N:	-
CHECKED:	SCALE:	4:1
DRAWING:	DATE:	2020-10-08
COMPANY WEBSITE: www.slkcorp.com		

SLK
 SUPERLINK

TITLE: SMB MALE S/T CRIMP FOR RG179-QS CABLE,75Ω

DRAWING NO: 7MBM11S-A00-003

CUSTOMER OUTLINE DRAWING