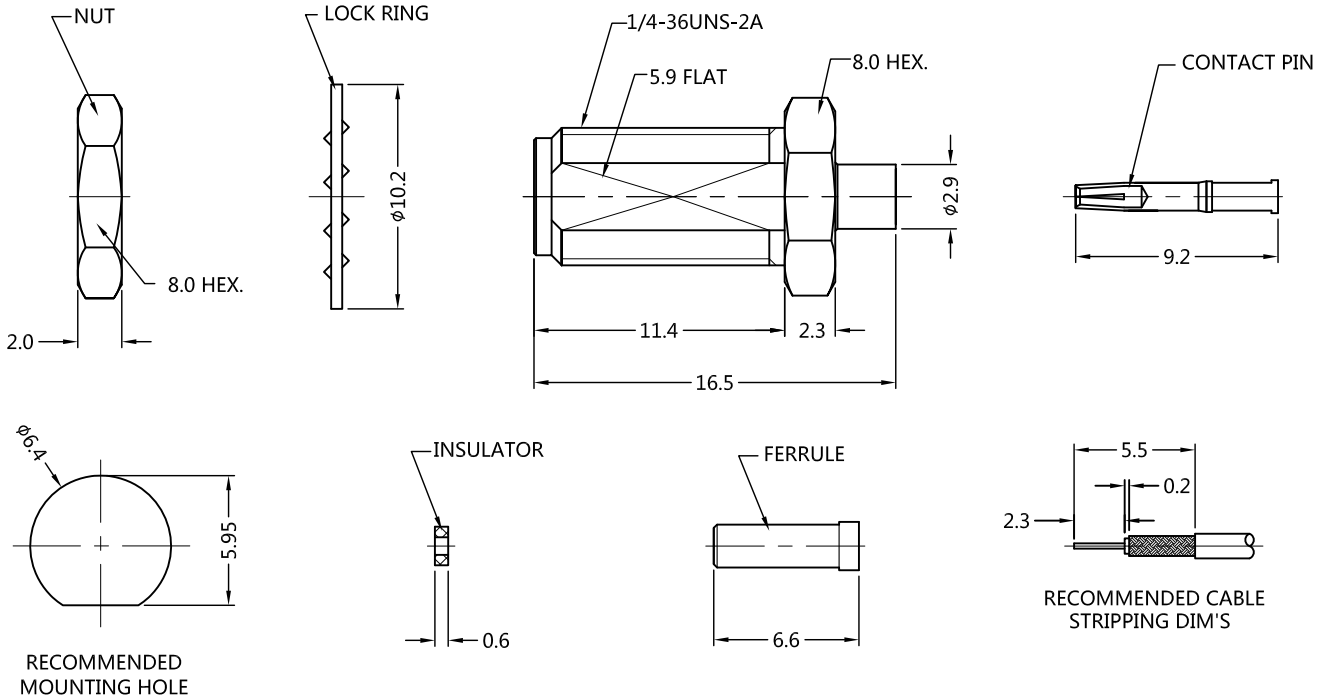


REV.	DESCRIPTION	ECN NO.	NAME	DATE
0	FIRST EDITION	N/A	Flame	2015-01-26
1	UPDATE THE DRAWING	N/A	Fang	2020-05-13
2	MODIFY THE LENGTH OF FERRULE	N/A	Fang	2020-05-14
3	UPDATE DRAWING	N/A	QGZ	2020-07-08



ALL PARTS MUST MEET TO RoHS REQUIREMENTS

- CRIMPED FERRULE HEX.
SMA FEMALE CONNECTOR: CRIMP SIZE .100"
- CONTACT PIN TO SOLDER



MATERIALS AND PLATING		UNIT: MICRO-INCHES
PART NAME	MATERIALS	PLATING
BODY	BRASS	GOLD PLATING
INSULATOR	PTFE ASTM-D-1710	N/A
CONTACT PIN	PHOSPHOR BRONZE	GOLD PLATING
NUT	BRASS	GOLD PLATING
FERRULE	BRASS	GOLD PLATING
LOCK RING	BRASS	GOLD PLATING

ELECTRICAL CHARACTERISTICS	
IMPEDANCE	50 Ω
VOLTAGE RATING	335 V(rms)
FREQUENCY RANGE	0 ~ 6 GHz
DIELECTRIC WITHSTANDING VOLTAGE	> 500 V
CONTACT RESISTANCE	CENTER CONTACT < 3.0 m Ω
	OUTER CONTACT < 2.0 m Ω
INSULATION RESISTANCE	> 5000 M Ω
INSERTION LOSS	N/A
VSWR	< 1.50
3RD INTERMODULATION	N/A

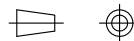
MECHANICAL CHARACTERISTICS	
FORCE TO ENGAGE AND DISENGAGE	N/A
CENTER CONTACT RETENTION FORCE	> 6 lbs
RECOMMENDED COUPLING TORQUE	N/A
COUPLING NUT RETENTION FORCE	N/A
DURABILITY	> 500 cycles

ENVIRONMENTAL PARAMETER	
TEMPERATURE RANGE	-40 $^{\circ}$ C ~ +125 $^{\circ}$ C
VIBRATION	MIL- STD 202, Meth. 204, Cond. D
SHOCK	MIL-STD-202, Meth. 213, Cond. I
CORROSION	MIL- STD 202, Meth. 101, Cond. B

* CUSTOMER OUTLINE DRAWING

- UNLESS OTHERWISE SPECIFIED:
- EDGES : C0.15 MAX ;
 - REMOVE ALL BURRS ;
 - SURFACE ROUGHNESS : Ra1.6 ;
 - UNITS : mm ;
 - DIMENSIONS TOLERANCES
DECIMALS : .x ± 0.3 .xx ± 0.2 .xxx ± 0.1 ;
ANGLES : $\pm 5^{\circ}$.

THIRD ANGLE PROJECTION



APPROVED :

CUSTOMER P/N :

CHECKED :

SCALE :

DRAWING :

DATE : 2020-07-08

PAGE : 1/1



TITLE : SMA BH FEMALE S/T FOR $\phi 1.37$ CABLE, 50 Ω

DRAWING NO. : 5MAF15S-A72-003

COMPANY WEBSITE : www.slkcorp.com

CUSTOMER OUTLINE DRAWING