

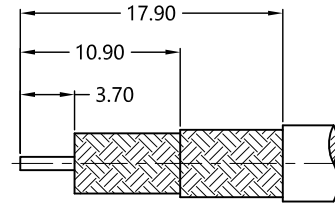
REV.	DESCRIPTION	ECN NO.	NAME	DATE
A1	NEW FRAME	N/A	ZXH	2020-09-16



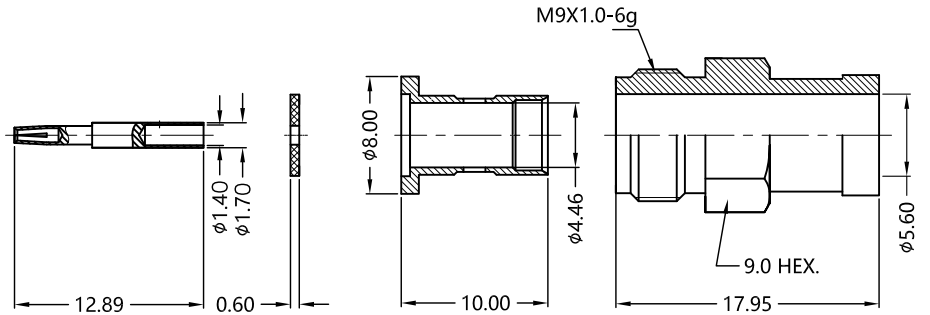
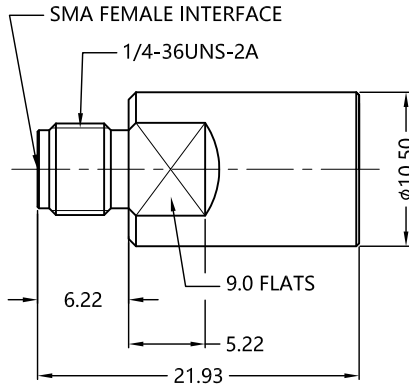
ALL PARTS MUST MEET TO RoHS REQUIREMENTS

REMARKS:

1. ADDS SIZE:11.8MM
2. CONTACT PIN AND SLEEVE TO SOLDER



RECOMMENDED CABLE STRIPPING DIM'S



MATERIALS AND PLATING		UNIT: MICRO-INCHES
PART NAME	MATERIALS	PLATING
BODY	STAINLESS STEEL	PASSIVATION
INSULATOR	PTFE ASTM-D-1710	N/A
CONTACT PIN	Be-Cu C17300	GOLD 50μ " / NICKEL/COPPER
SLEEVE	BRASS C3604	GOLD 10μ " / NICKEL/COPPER
BARREL	STAINLESS STEEL	PASSIVATION

ELECTRICAL CHARACTERISTICS	
IMPEDANCE	50 Ω
VOLTAGE RATING	500 V(rms)
FREQUENCY RANGE	0 ~ 18 GHz
DIELECTRIC WITHSTANDING VOLTAGE	750 V
CONTACT RESISTANCE	CENTER CONTACT
	OUTER CONTACT
INSULATION RESISTANCE	
INSERTION LOSS	
VSWR	
3RD INTERMODULATION	

MECHANICAL CHARACTERISTICS	
FORCE TO ENGAGE AND DISENGAGE	N/A
CENTER CONTACT RETENTION FORCE	N/A
RECOMMENDED COUPLING TORQUE	N/A
COUPLING NUT RETENTION FORCE	N/A
DURABILITY	>500cycles

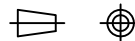
ENVIRONMENTAL PARAMETER	
TEMPERATURE RANGE	-55 °C~+125 °C
CORROSION	MIL-STD-202,Method 101,Cond B
VIBRATION	MIL- STD 202, Meth. 204,Cond. D
SHOCK	MIL- STD 202, Meth. 213,Cond. I
RELATIVE HUMIDITY	MIL-STD-202,Method 106

\* CUSTOMER OUTLINE DRAWING

UNLESS OTHERWISE SPECIFIED:

- 1) EDGES : C0.15 MAX ;
- 2) REMOVE ALL BURRS ;
- 3) SURFACE ROUGHNESS : Ra1.6 ;
- 4) UNITS : mm ;
- 5) DIMENSIONS TOLERANCES  
DECIMALS : .x ±0.3 .xx ±0.2 .xxx±0.1;  
ANGLES : ± 5°.

THIRD ANGLE PROJECTION



APPROVED :

CUSTOMER P/N :

CHECKED :

SCALE :

1 : 1

DRAWING :

ZXH

DATE : 2020-09-16

PAGE : 1/1



TITLE : SMA FEMALE S/T FOR

SFT-205 CABLE 50Ω

DRAWING NO. :

5MAF15S-A207

COMPANY WEBSITE : www.slkcorp.com

CUSTOMER OUTLINE DRAWING