
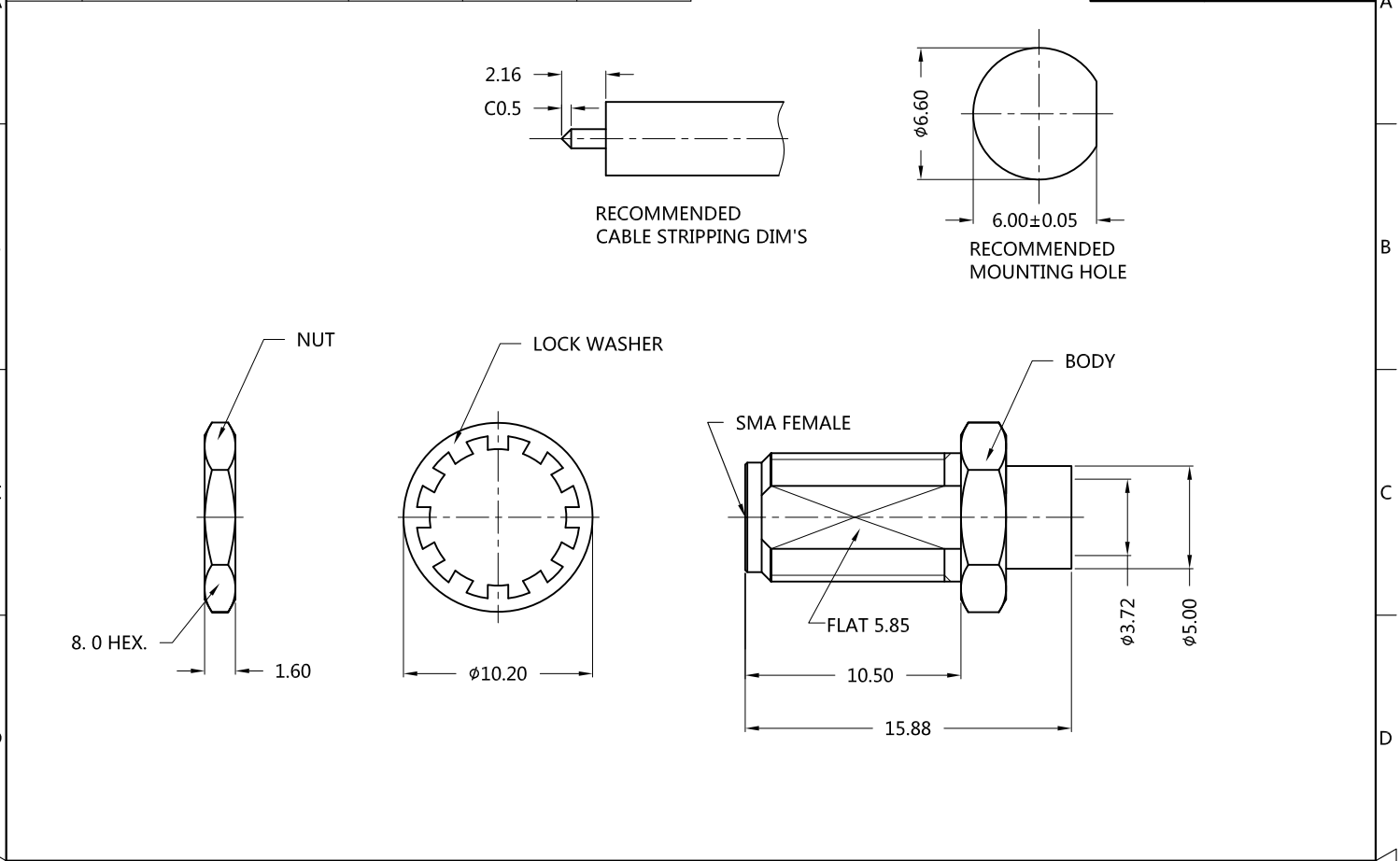


REV.	DESCRIPTION	ECN NO.	NAME	DATE	 <b>ALL PARTS MUST MEET TO RoHS REQUIREMENTS</b>
0	FIRST EDITION	N/A	YY	2012-12-27	
1	NEW FRAME	N/A	LEI CHAO	2020-08-12	



MATERIALS AND PLATING		UNIT: MICRO-INCHES
PART NAME	MATERIALS	PLATING
BODY	BRASS C3604	GOLD 3 u"/NICKEL/COPPER
INSULATOR	TEFLON MIL-P-19468	N/A
CONTACT PIN	Be-Cu C17300	GOLD 10 u"/NICKEL/COPPER
NUT	BRASS C3604	GOLD 3 u"/NICKEL/COPPER
LOCK WASHER	BRASS	GOLD 3 u"/NICKEL/COPPER

ELECTRICAL CHARACTERISTICS	
IMPEDANCE	50 Ω
VOLTAGE RATING	170 V(rms)
FREQUENCY RANGE	DC ~ 13.5 GHz
DIELECTRIC WITHSTANDING VOLTAGE	> 500 V
CONTACT RESISTANCE	CENTER CONTACT
	OUTER CONTACT
INSULATION RESISTANCE	> 5000 MΩ
INSERTION LOSS	According to the cable
Return loss	> 21dB@5.7-8.5 GHz > 19dB@10.1-13.5 GHz

MECHANICAL CHARACTERISTICS	
CABLE RETENTION FORCE	N/A
CENTER CONTACT RETENTION FORCE	N/A
RECOMMENDED COUPLING TORQUE	N/A
COUPLING NUT RETENTION FORCE	N/A
DURABILITY	> 500 cycles

ENVIRONMENTAL PARAMETER	
TEMPERATURE RANGE	-55 °C ~ +125 °C
RELATIVE HUMIDITY	MIL-STD-202, Method 106
VIBRATION	MIL-STD-202, Method 204, Cond D
SHOCK	MIL-STD-202, Method 213, Cond I
CORROSION	MIL-STD-202, Method 101, Cond B

**\* CUSTOMER OUTLINE DRAWING**

UNLESS OTHERWISE SPECIFIED:  
 1) EDGES : C0.15 MAX ;  
 2) REMOVE ALL BURRS ;  
 3) SURFACE ROUGHNESS : Ra1.6 ;  
 4) UNITS : mm ;  
 5) DIMENSIONS TOLERANCES  
 DECIMALS : .x ±0.3 .xx ±0.2 .xxx±0.1;  
 ANGLES : ± 5°.

THIRD ANGLE PROJECTION	
APPROVED :	CUSTOMER P/N :
CHECKED :	SCALE :
DRAWING :	DATE : 2020-08-12
PAGE : 1/1	



TITLE : SMA FEMALE S/T SOLDER FOR FLEXIFORM402NM FL CABLE, 50Ω  
 DRAWING NO. : 5MAF15S-S02-012  
 COMPANY WEBSITE : www.slkcorp.com

CUSTOMER OUTLINE DRAWING