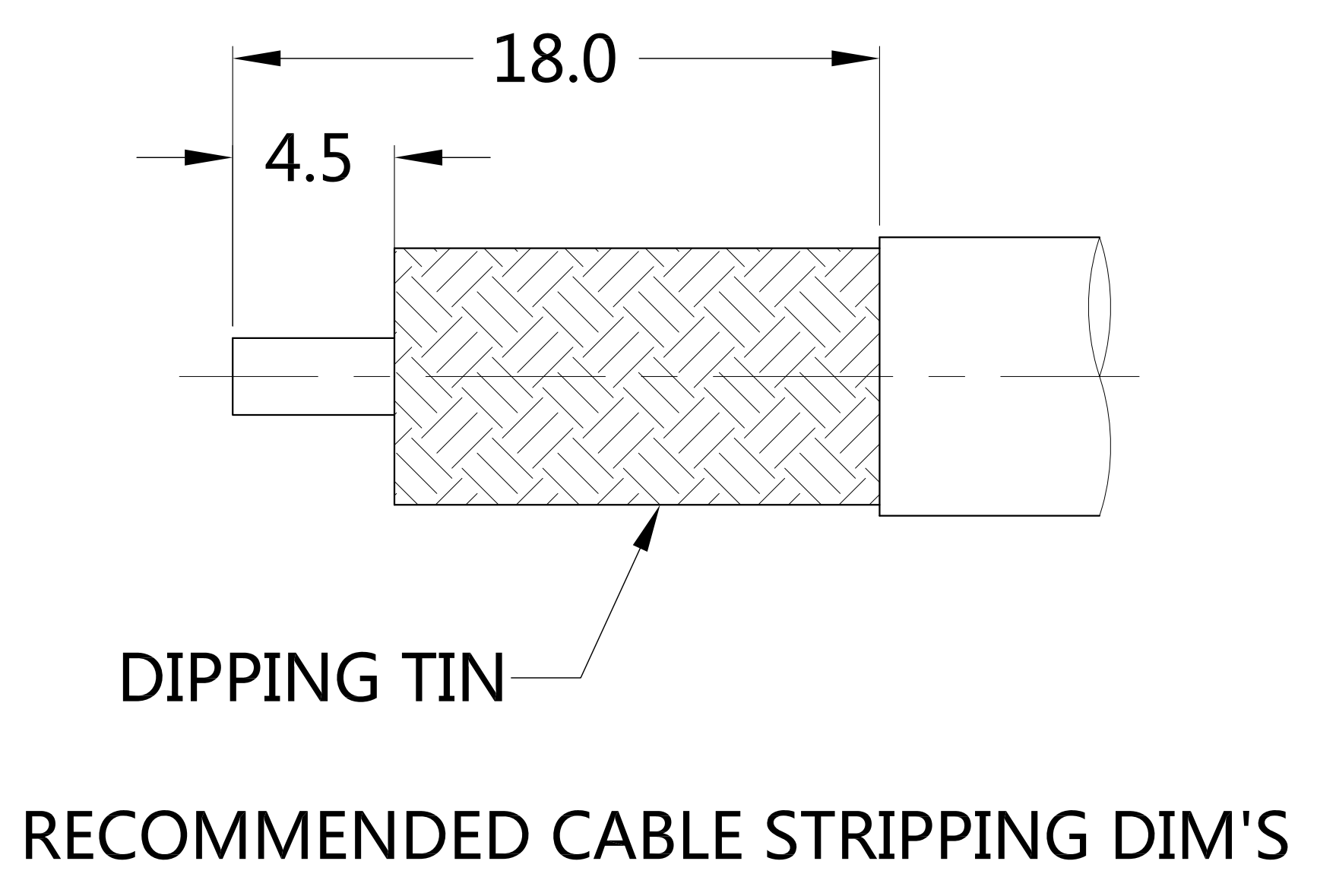
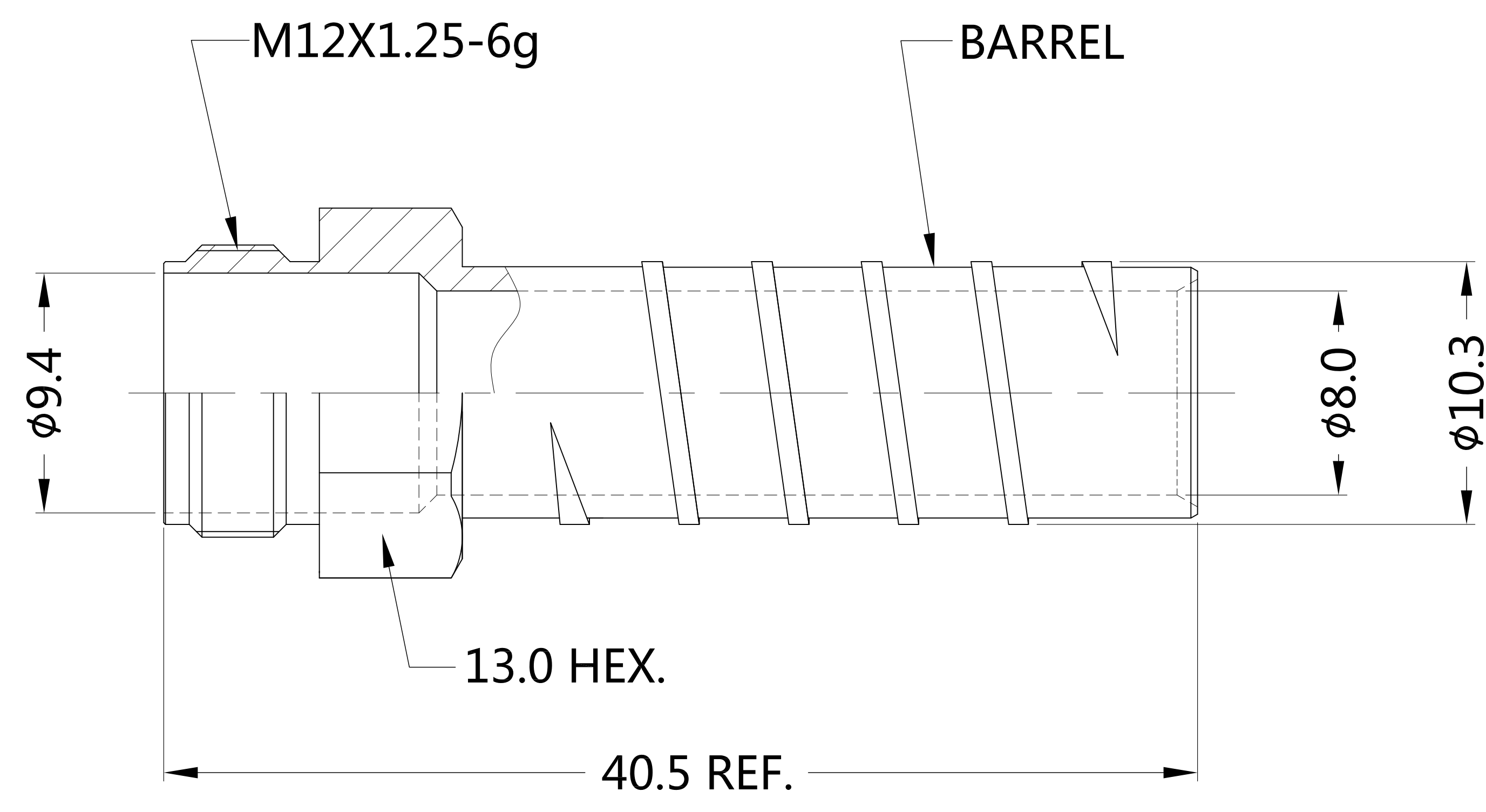
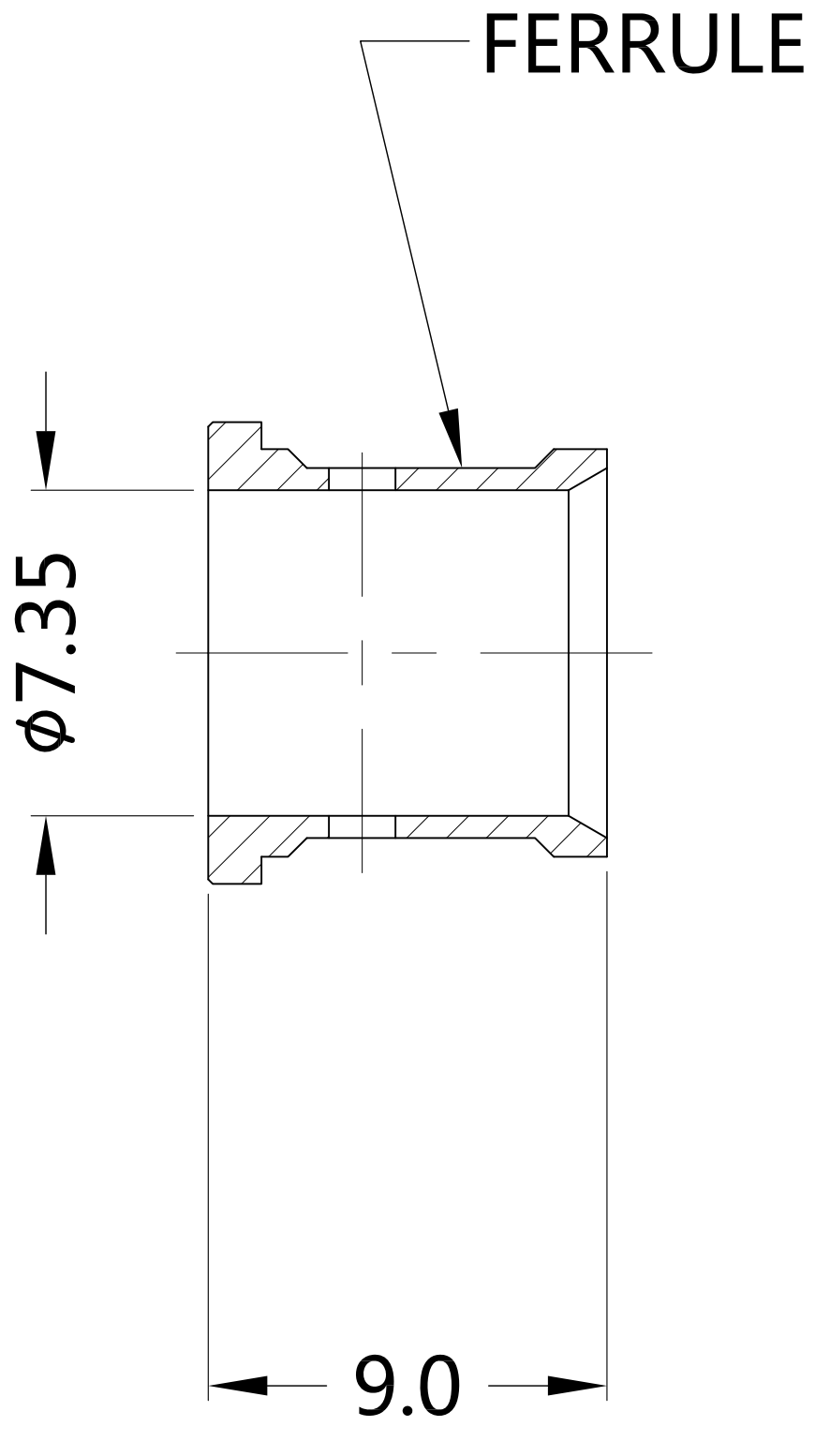
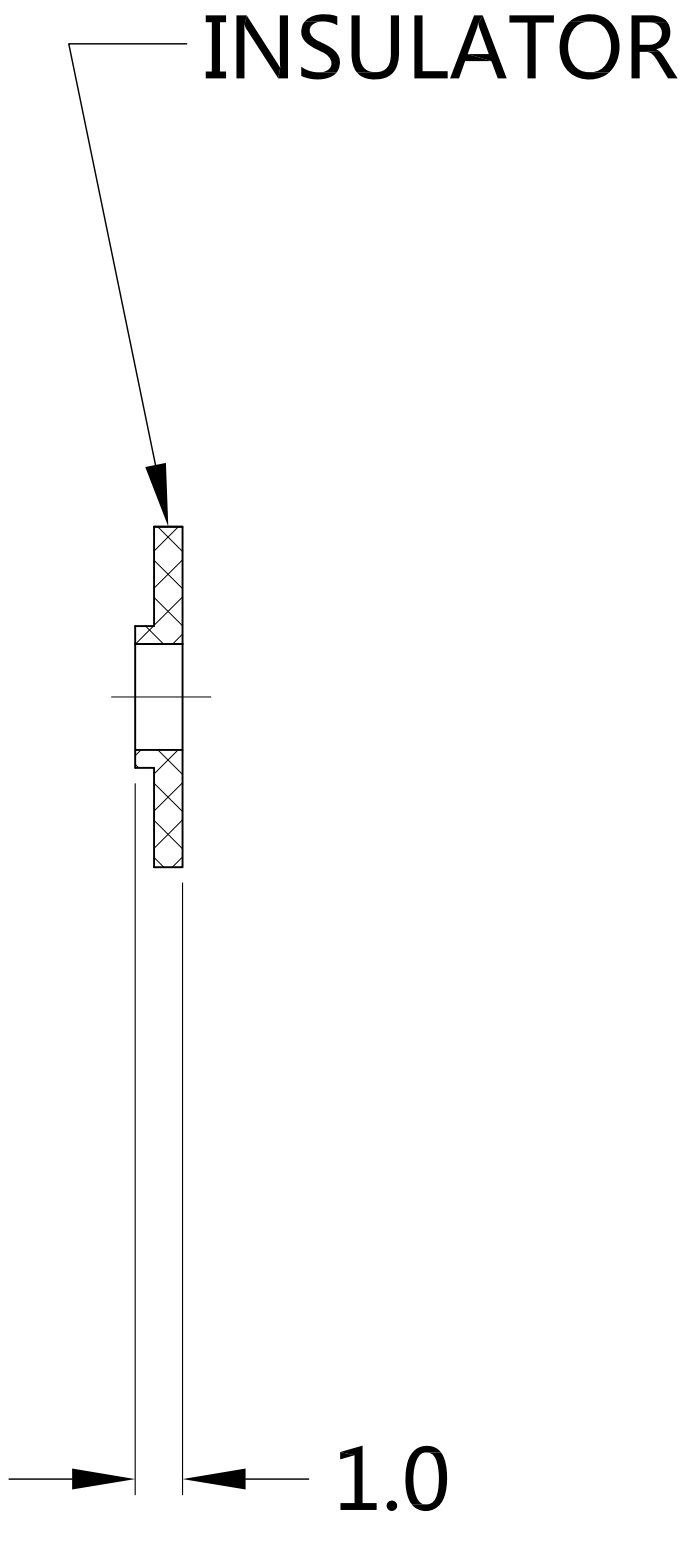
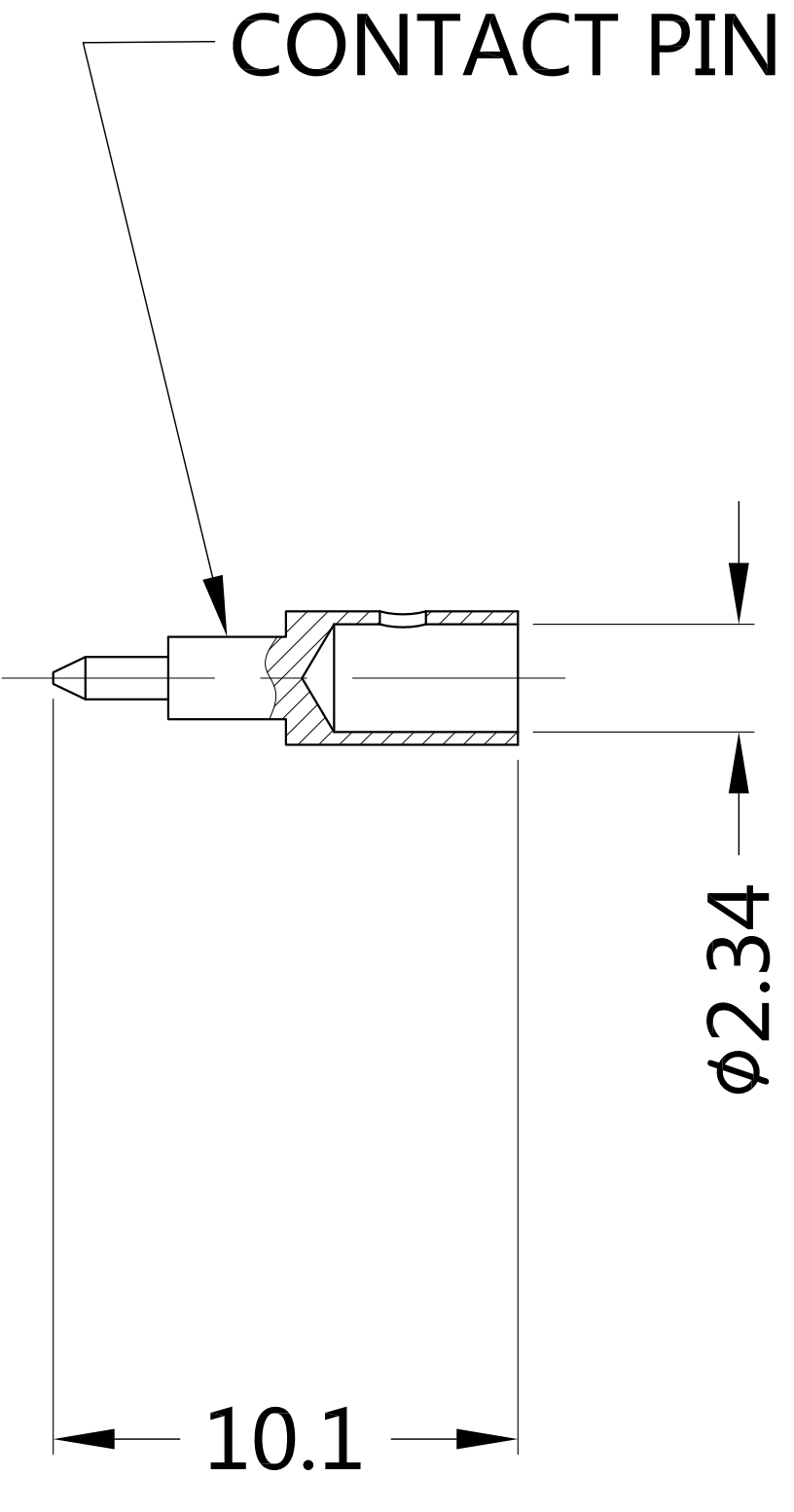
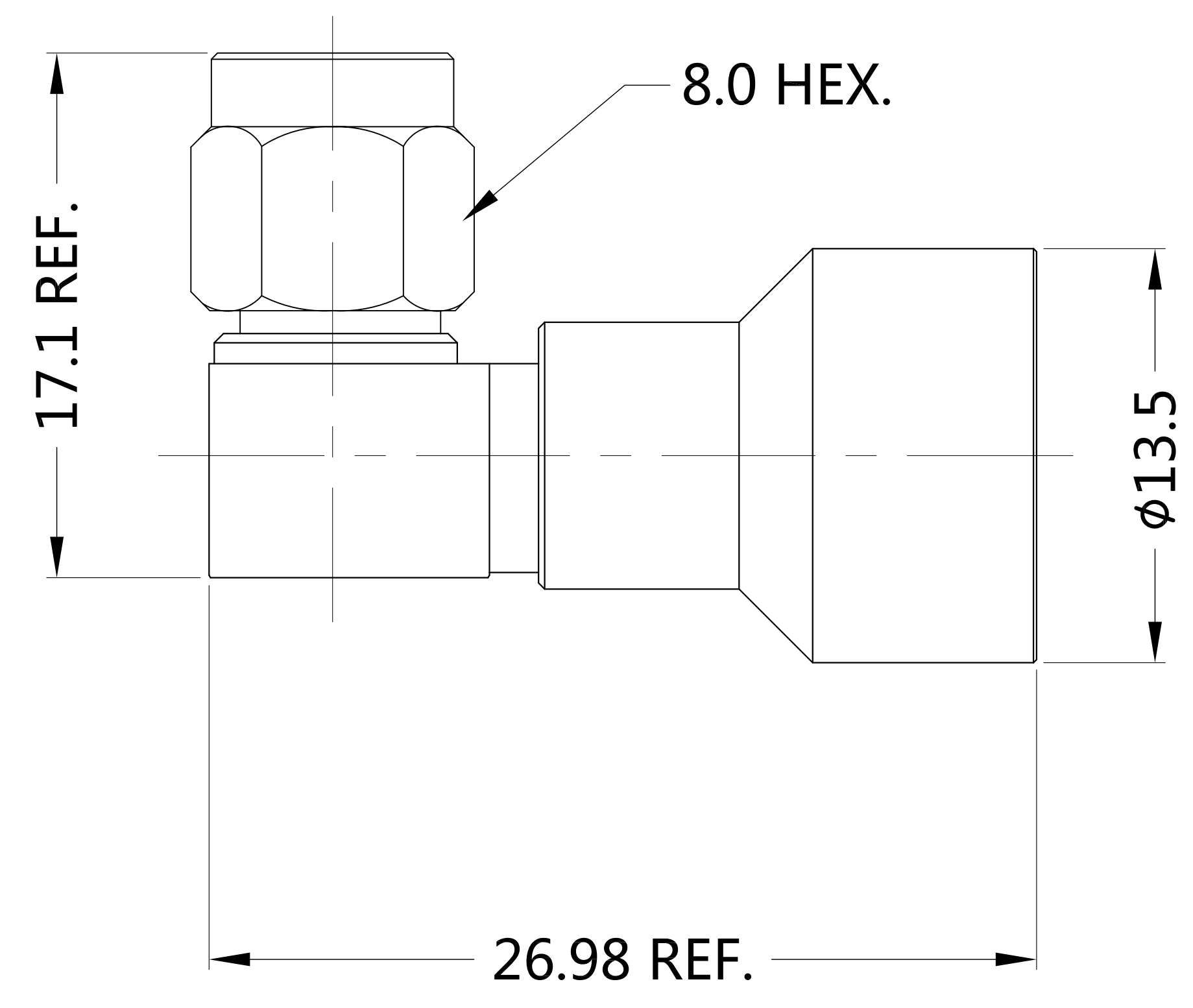


REV.	DESCRIPTION	ECN NO.	NAME	DATE
0	FIRST EDITION	N/A	SK	2015-09-06
1	NEW FRAME	N/A	JASON	2020-08-20

REMARKS:  
1.ADD SIZE: 15.6mm  
2.CONTACT PIN TO SOLDER.



ALL PARTS MUST MEET TO RoHS REQUIREMENTS



MATERIALS AND PLATING		UNIT: MICRO-INCHES
PART NAME	MATERIALS	PLATING
BODY	BRASS C3602	GOLD 10 u"/NICKEL/COPPER
	STAINLESS STEEL 303Cu	PASSIVATION
CONTACT PIN	BRASS C3604	GOLD 50 u"/NICKEL/COPPER
INSULATOR	PTFE ASTM-D-1710	N/A
SHELL	STAINLESS STEEL 303Cu	PASSIVATION
BARREL	STAINLESS STEEL 303Cu	PASSIVATION

ELECTRICAL CHARACTERISTICS		
IMPEDANCE	50 Ω	
VOLTAGE RATING	335 V(rms)	
FREQUENCY RANGE	DC ~ 18 GHz	
DIELECTRIC WITHSTANDING VOLTAGE	>500 V	
CONTACT RESISTANCE	CENTER CONTACT	<3.0 mΩ
	OUTER CONTACT	<2.0 mΩ
INSULATION RESISTANCE	>5000 MΩ	
INSERTION LOSS	ACCORDING TO THE CABLE	
VSWR	< 1.35	

MECHANICAL CHARACTERISTICS	
FORCE TO ENGAGE AND DISENGAGE	N/A
CENTER CONTACT RETENTION FORCE	> 6 lbs
RECOMMENDED COUPLING TORQUE	7~10 in.lbs
COUPLING NUT RETENTION FORCE	> 60 lbs
DURABILITY	> 500 cycles

ENVIRONMENTAL PARAMETER	
TEMPERATURE RANGE	-40 °C ~ +125 °C
VIBRATION	MIL-STD-202, Method 204, Cond B
SHOCK	MIL-STD-202, Method 213, Cond G
CORROSION	MIL-STD-202, Method 101, Cond B

\* CUSTOMER OUTLINE DRAWING

UNLESS OTHERWISE SPECIFIED:  
1) EDGES : C0.15 MAX ;  
2) REMOVE ALL BURRS ;  
3) SURFACE ROUGHNESS : Ra1.6 ;  
4) UNITS : mm ;  
5) DIMENSIONS TOLERANCES  
DECIMALS : .x ±0.3 .xx ±0.2 .xxx±0.1 ;  
ANGLES : ± 5°.

THIRD ANGLE PROJECTION		
APPROVED :	CUSTOMER P/N :	-
CHECKED :	SCALE :	1 : 1
DRAWING :	DATE :	2020-08-20
JASON	PAGE :	1/1

**SLK**  
SUPERLINK

TITLE : SMA MALE R/A SOLDER FOR HF-290 CABLE, 50Ω

DRAWING NO. : 5MAM15R-A210

COMPANY WEBSITE : www.slkcorp.com

CUSTOMER OUTLINE DRAWING