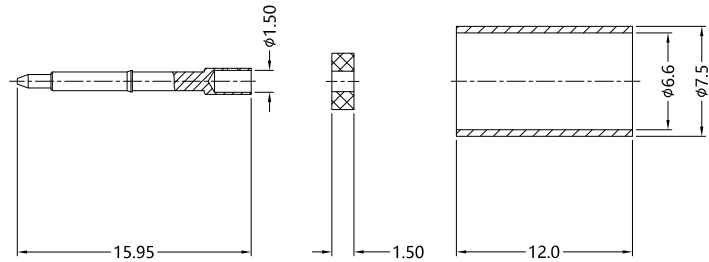
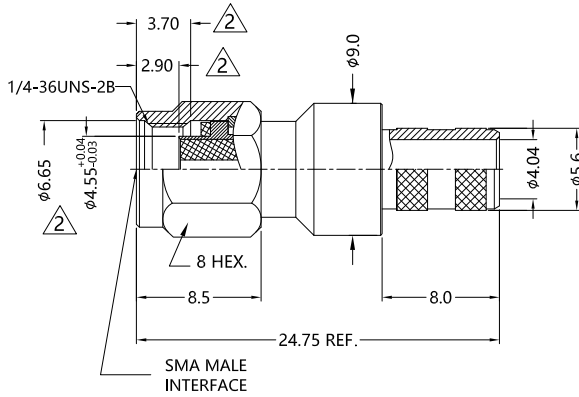
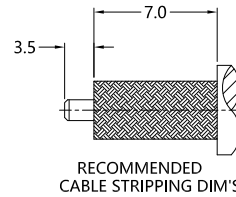


REV.	DESCRIPTION	ECN NO.	NAME	DATE
1	NEW FRAME	N/A	JING	2020-07-11
2	UPDATE DRAWING VIEW	N/A	YJY	2021-09-15



ALL PARTS MUST MEET TO RoHS REQUIREMENTS

- FERRULE TO CRIMPED THE HEX. SIZE .256"
- CONTACT PIN TO SOLDER



MATERIALS AND PLATING		UNIT: MICRO-INCHES
PART NAME	MATERIALS	PLATING
BODY/SHELL	BRASS C3604	NICKEL 200u"/COPPER
INSULATOR	TEFLON MIL-P-19468	N/A
CONTACT PIN	BRASS C3604	GOLD 10 u"/NICKEL/COPPER
GASKET	SILICONE	N/A
FERRULE	BRASS	NICKEL 200u"/COPPER

ELECTRICAL CHARACTERISTICS	
IMPEDANCE	50 Ω
VOLTAGE RATING	335 V(rms)
FREQUENCY RANGE	DC ~ 6 GHz
DIELECTRIC WITHSTANDING VOLTAGE	>500 V
CONTACT RESISTANCE	CENTER CONTACT <3.0 mΩ
	OUTER CONTACT <2.0 mΩ
INSULATION RESISTANCE	>5000 MΩ
INSERTION LOSS	< 0.1X/F(GHz)
RF-LEAKAGE	N/A
VSWR	<1.25
3RD INTERMODULATION	N/A

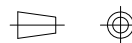
MECHANICAL CHARACTERISTICS	
FORCE TO ENGAGE AND DISENGAGE	N/A
CENTER CONTACT RETENTION FORCE	N/A
RECOMMENDED COUPLING TORQUE	7-10 in-lbs
COUPLING NUT RETENTION FORCE	>60 lbs
DURABILITY	>500 cycles

ENVIRONMENTAL PARAMETER	
TEMPERATURE RANGE	-55 °C ~ +125 °C

\* CUSTOMER OUTLINE DRAWING

- UNLESS OTHERWISE SPECIFIED:
- EDGES : C0.15 MAX ;
  - REMOVE ALL BURRS ;
  - SURFACE ROUGHNESS : Ra1.6 ;
  - UNITS : mm ;
  - DIMENSIONS TOLERANCES  
DECIMALS : .x ±0.3 .xx ±0.2 .xxx ±0.1;  
ANGLES : ± 5°.

THIRD ANGLE PROJECTION



APPROVED :

CUSTOMER P/N :

CHECKED :

SCALE :

2: 1

DRAWING :

DATE : 2021-09-15

PAGE : 1/1



TITLE : SMA MALE S/T CRIMP FOR LMR-240 CABLE, 50Ω

DRAWING NO. :

5MAM11S-A46-015

COMPANY WEBSITE : www.slkcorp.com

CUSTOMER OUTLINE DRAWING