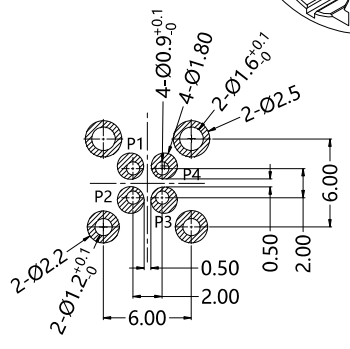
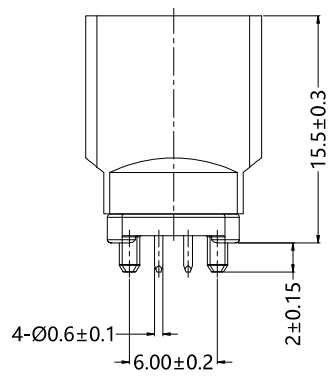
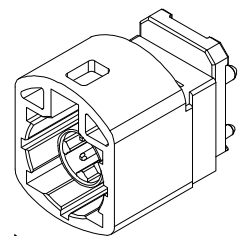


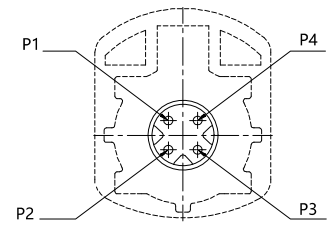
REV.	DESCRIPTION	ECN NO.	NAME	DATE					
0	FIRST EDITION	N/A	Ming	2023-11-01					



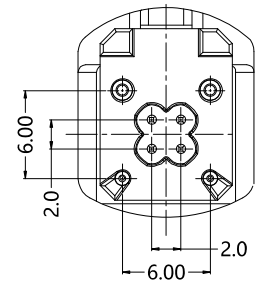
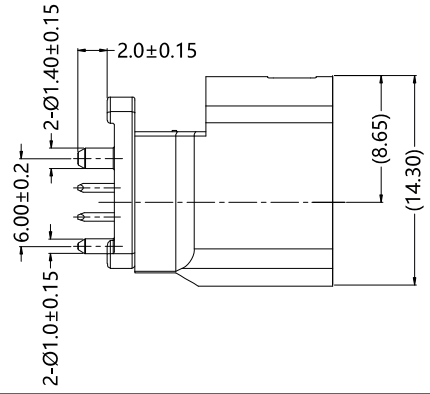
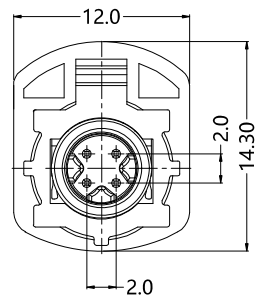
ALL PARTS MUST MEET TO RoHS REQUIREMENTS



RECOMMENDED PCB LAYOUT TOLERANCE: ±0.05



PINING STANDARD



MATERIALS AND PLATING		UNIT: MICRO-INCHES
PART NAME	MATERIALS	PLATING
BODY	ZINC ALLOY	PL. TIN /NICKEL/COPPER
INSULATOR	LCP, BLACK	N/A
CONTACT PIN	COPPER ALLOY	PL.GOLD /COPPER
HOUSING	High temperature Thermoplastic	N/A

ELECTRICAL CHARACTERISTICS	
IMPEDANCE	100 Ω
VOLTAGE RATING	250 V(rms)
FREQUENCY RANGE	DC ~ 2 GHz
DIELECTRIC WITHSTANDING VOLTAGE	> 500 V
CONTACT RESISTANCE	CENTER CONTACT < 10 mΩ
	OUTER CONTACT < 7.5 mΩ
INSULATION RESISTANCE	> 1000 MΩ
INSERTION LOSS	< 0.15 * √ f GHz

MECHANICAL CHARACTERISTICS	
MATING FORCE	≤ 25 N
DISENGAGEMENT FORCE	> 5N, < 25N
CONNECTOR DISENGAGE WITH LOCK	≥ 110N
CODING EFFICIENCY	> 80 N
DURABILITY	≥ 25cycles


ENVIRONMENTAL PARAMETER	
TEMPERATURE RANGE	-40 °C ~ +105 °C

* CUSTOMER OUTLINE DRAWING















UNLESS OTHERWISE SPECIFIED:
 1) EDGES : C0.15 MAX ;
 2) REMOVE ALL BURRS ;
 3) SURFACE ROUGHNESS : Ra1.6 ;
 4) UNITS : mm ;
 5) DIMENSIONS TOLERANCES
 DECIMALS : .x ±0.3 .xx ±0.2 .xxx±0.1;
 ANGLES : ± 5°.

THIRD ANGLE PROJECTION	
APPROVED :	CUSTOMER P/N :
CHECKED :	SCALE : 1 : 1
DRAWING :	DATE : 2023-11-01
PAGE : 1/2	

TITLE : HSD MALE S/T 4Pin FOR PCB WITH PCB HOUSING
 DRAWING NO. : 10HSM2*S-P44-101
 COMPANY WEBSITE : www.slkcorp.com

REV.	DESCRIPTION	ECN NO.	NAME	DATE	 ALL PARTS MUST MEET TO RoHS REQUIREMENTS
0	FIRST EDITION	N/A	Ming	2023-11-01	

P/N LIST

SLK P/N	PLUG	CODING	COLOR	RAL	SLK P/N	PLUG	CODING	COLOR	RAL
10HSM2AS-P44-101		A	BLACK	9005	10HSM2GS-P44-101		G	GREY	7031
10HSM2BS-P44-101		B	WHITE	9001	10HSM2HS-P44-101		H	VIOLET	4003
10HSM2CS-P44-101		C	BLUE	5005	10HSM2JS-P44-101		J	BEIGE	1001
10HSM2DS-P44-101		D	CLARET	4004	10HSM2KS-P44-101		K	CURRY	1027
10HSM2ES-P44-101		E	GREEN	6002	10HSM2LS-P44-101		L	YELLOW GREEN	6018
10HSM2FS-P44-101		F	BROWN	8011	10HSM2MS-P44-101		M	PASTEL ORANGE	2003
10HSM2ZS-P44-101		Z	WATER BLUE	5021	10HSM2OS-P44-101		O	LIGHT GREEN	6027

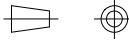

MATERIALS AND PLATING		UNIT: MICRO-INCHES
PART NAME	MATERIALS	PLATING
BODY	ZINC ALLOY	PL. TIN /NICKEL/COPPER
INSULATOR	LCP, BLACK	N/A
CONTACT PIN	COPPER ALLOY	PL.GOLD /COPPER
HOUSING	High temperature Thermoplastic	N/A

ELECTRICAL CHARACTERISTICS	
IMPEDANCE	100 Ω
VOLTAGE RATING	250 V(rms)
FREQUENCY RANGE	DC ~ 2 GHz
DIELECTRIC WITHSTANDING VOLTAGE	> 500 V
CONTACT RESISTANCE	CENTER CONTACT < 10 mΩ
	OUTER CONTACT < 7.5 mΩ
INSULATION RESISTANCE	> 1000 MΩ
INSERTION LOSS	< 0.15 * √ f GHz

MECHANICAL CHARACTERISTICS	
MATING FORCE	≤ 25 N
DISENGAGEMENT FORCE	> 5N, < 25N
CONNECTOR DISENGAGE WITH LOCK	≥ 110N
CODING EFFICIENCY	> 80 N
DURABILITY	≥ 25cycles

ENVIRONMENTAL PARAMETER	
TEMPERATURE RANGE	-40 °C ~ +105 °C

* CUSTOMER OUTLINE DRAWING

UNLESS OTHERWISE SPECIFIED: 1) EDGES : C0.15 MAX ; 2) REMOVE ALL BURRS ; 3) SURFACE ROUGHNESS : Ra1.6 ; 4) UNITS : mm ; 5) DIMENSIONS TOLERANCES DECIMALS : .x ±0.3 .xx ±0.2 .xxx±0.1; ANGLES : ± 5°.	THIRD ANGLE PROJECTION			
	APPROVED :			CUSTOMER P/N :
	CHECKED :	SCALE :		1 : 1
	DRAWING :	DATE :		2023-11-01
PAGE : 2/2		TITLE : HSD MALE S/T 4Pin FOR PCB WITH PCB HOUSING DRAWING NO. : 10HSM2*S-P44-101 COMPANY WEBSITE : www.slkcorp.com		